









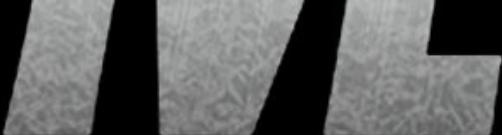








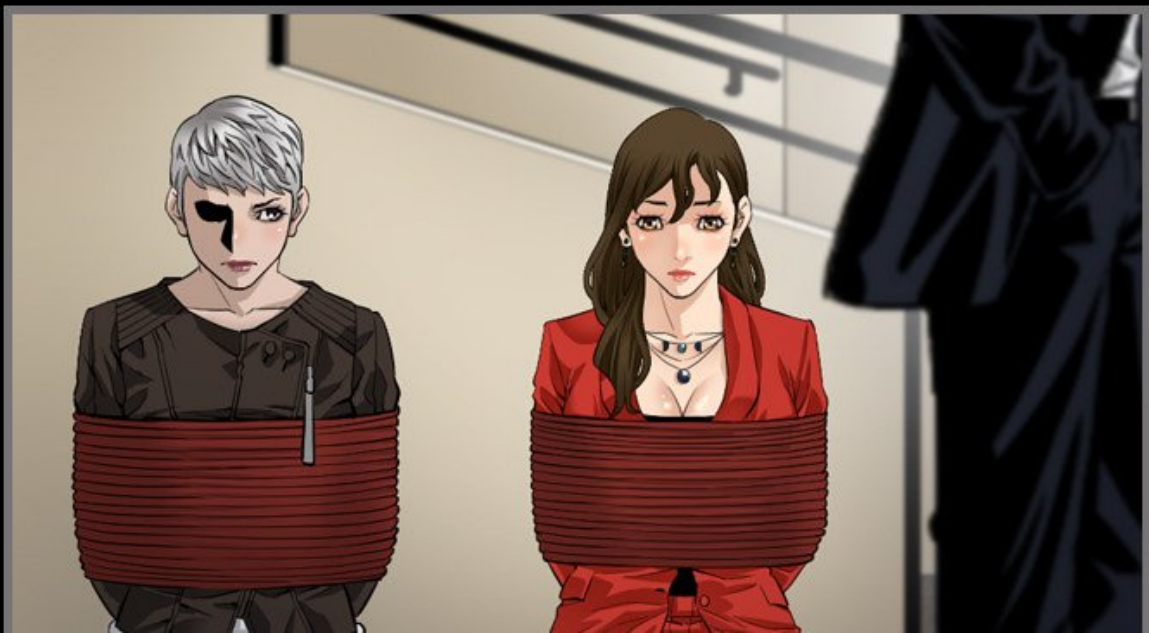
**RUNNING  
MAN**



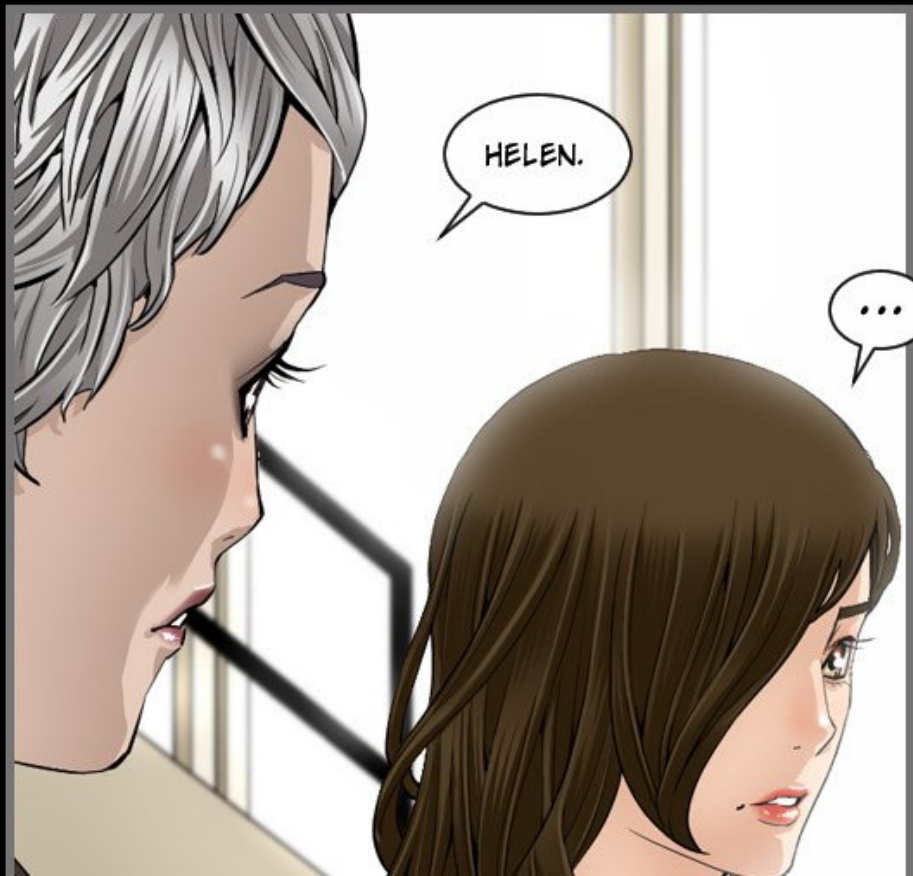
Story: JIHOON AHN

Bild: YEONGPIL KIM





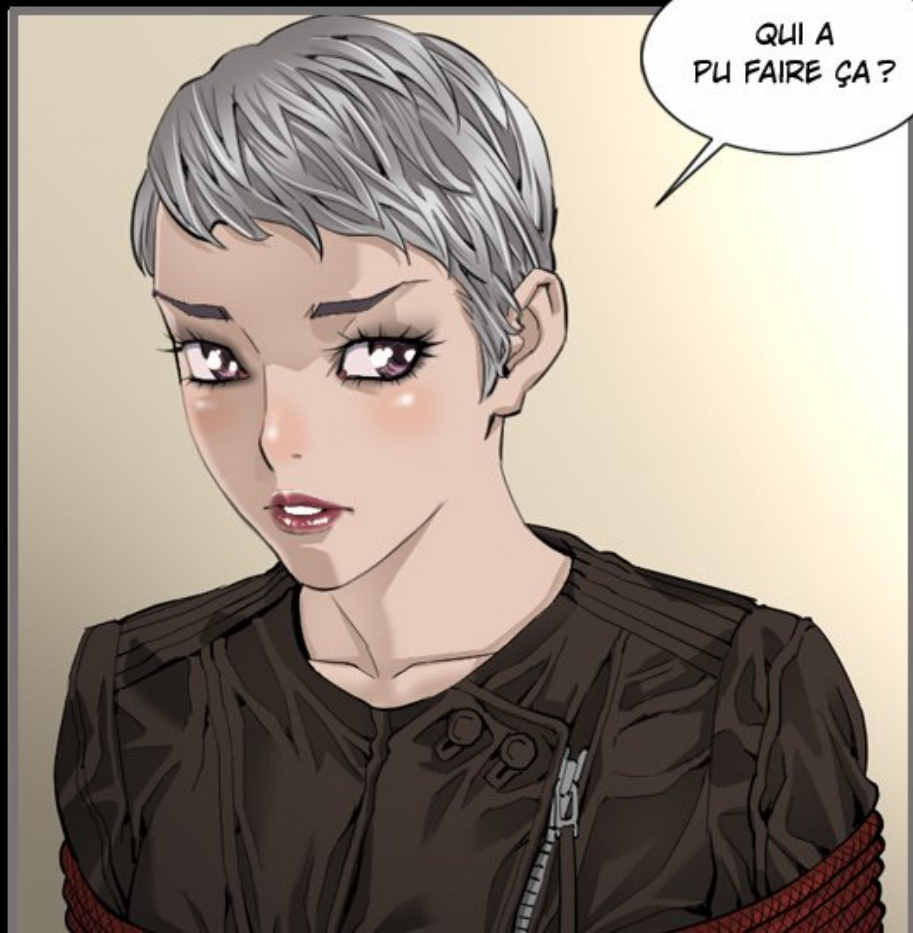




HELEN.

...

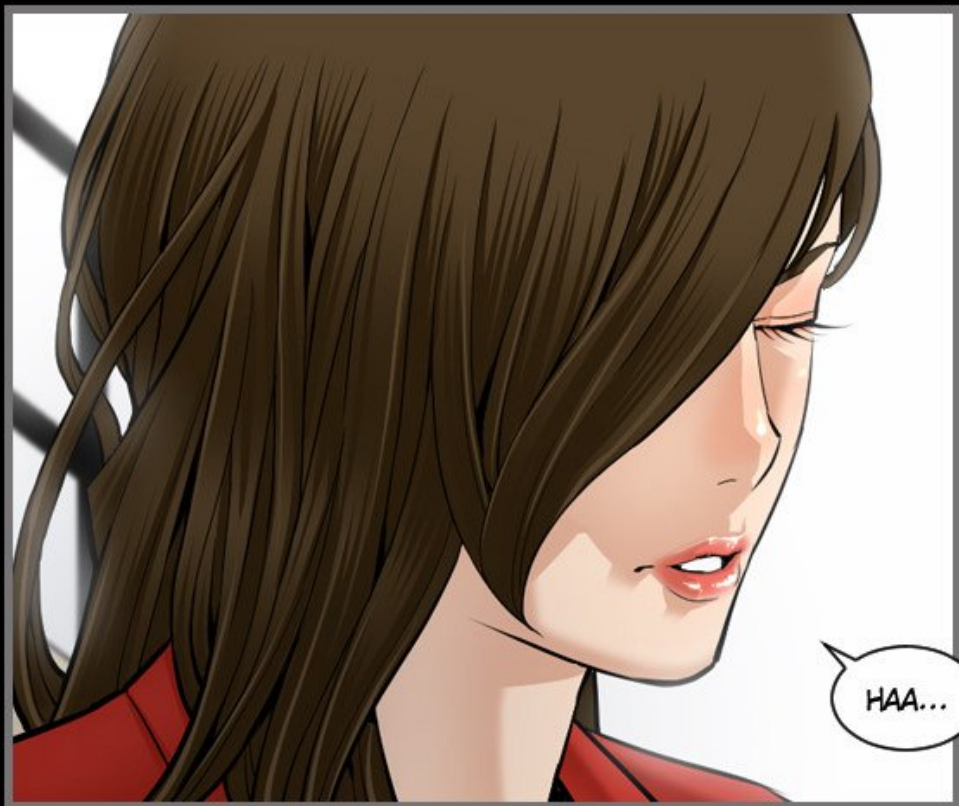




QUI A  
PU FAIRE ÇA ?







HAA...

A comic panel showing two characters in a room. On the left, the back of a person's head with short, light brown hair is visible. On the right, the profile of a person with dark hair is visible. A large white speech bubble is positioned in the center of the panel, containing the text "CE MANOIR APPARTIENT AU PRÉSIDENT." in black, uppercase letters.

CE MANOIR  
APPARTIENT AU  
PRÉSIDENT.



LA SEULE  
PERSONNE QUI  
A ACCÈS À SES  
PROPRIÉTÉS...

ET QUI  
VEUT RUINER  
NOS PLANS...  
LA RÉPONSE  
EST SIMPLE.







LA FILLE  
DU PRÉSIDENT,  
IRENE.

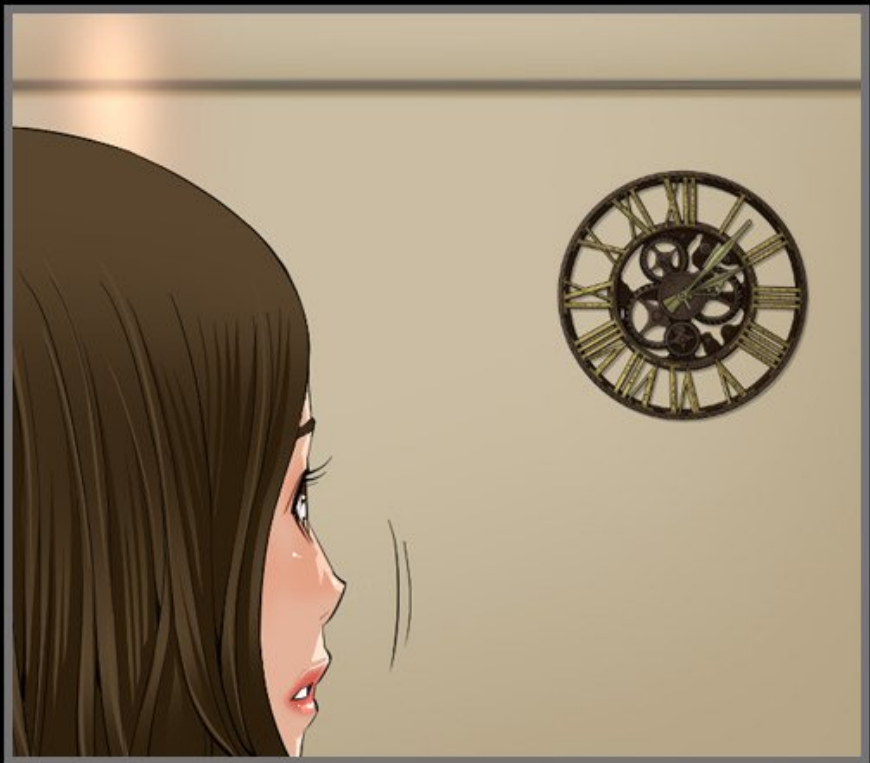


ELLE NOUS  
ESPIONNAIT  
SANS DOUTE  
DEPLIS LE  
DÉBUT.



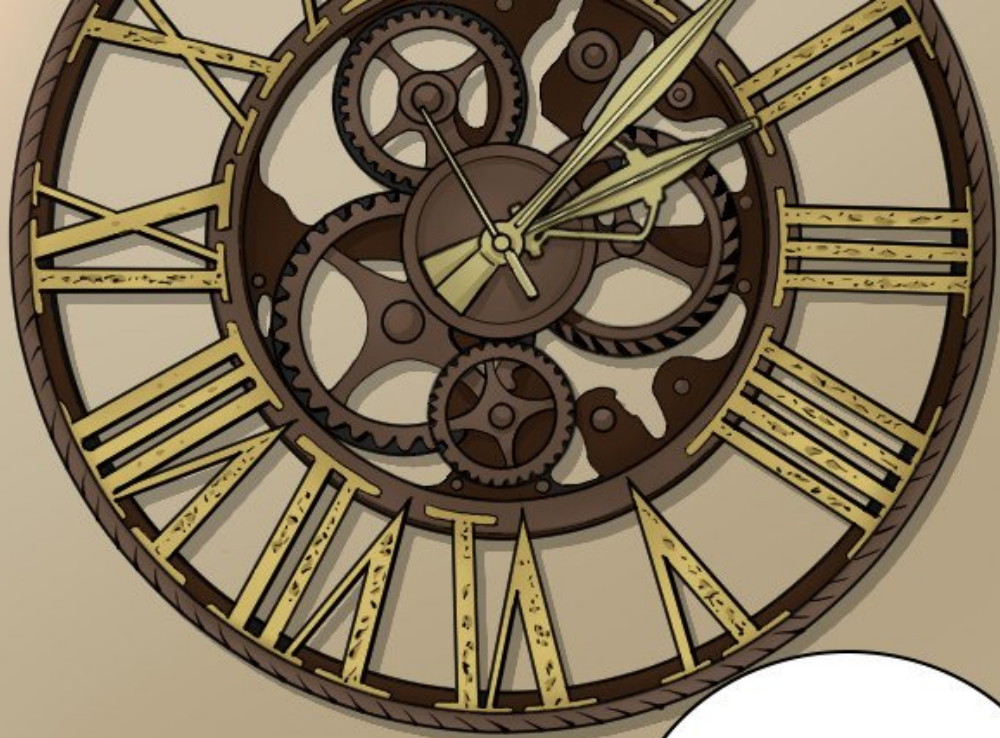






ÇA FAIT  
3 HEURES QUE  
M. KANG A  
REÇU SON  
INJECTION.





IL NE RESTE  
PLUS QU'UNE  
HEURE AVANT QUE  
LE SPERME DU  
PRÉSIDENT NE  
SOIT PERDU.



MISS  
TRAINER,



VOUS PENSEZ  
POUVOIR TROUVER  
M. KANG ET PARTIR  
D'ICI ?

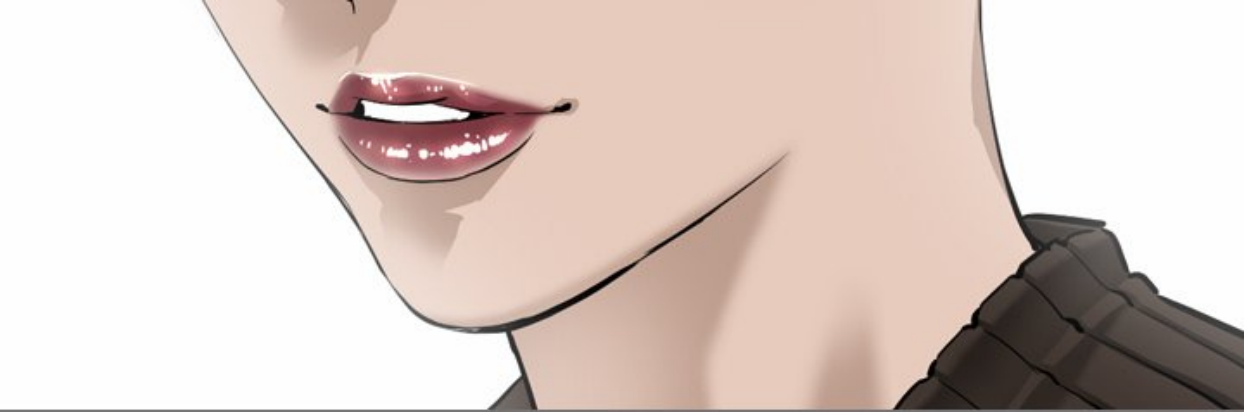
A close-up illustration of a person's lips, rendered with a highly glossy, metallic pink finish. The lips are slightly parted, showing a small gap. The surface of the lips is covered in numerous bright, white highlights, giving them a shimmering, reflective appearance. The background is a soft, light pinkish-beige color. In the upper right corner, there is a white speech bubble with a black outline, containing the text "BIEN SÛR." in a simple, black, sans-serif font.

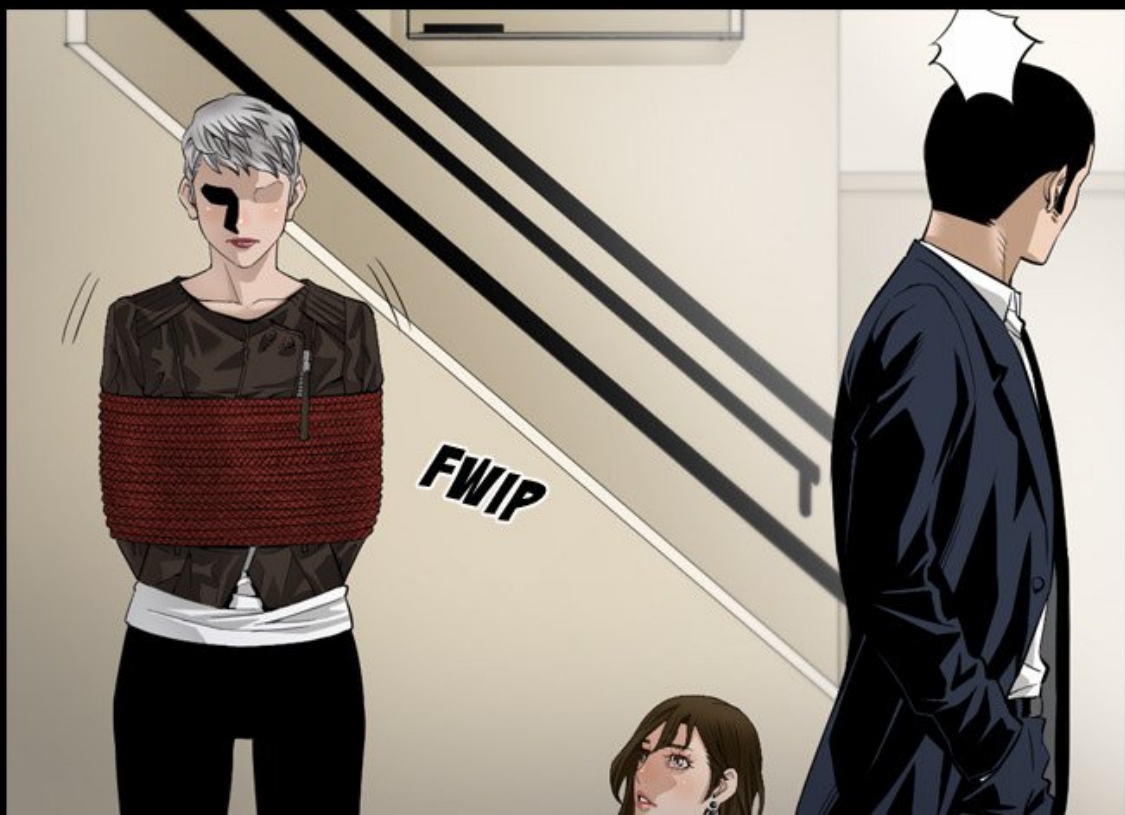
BIEN SÛR.



JE  
REVIENS.







**FWIP**



HÉ!  
ASSIEDS-TOI!





**FWING**



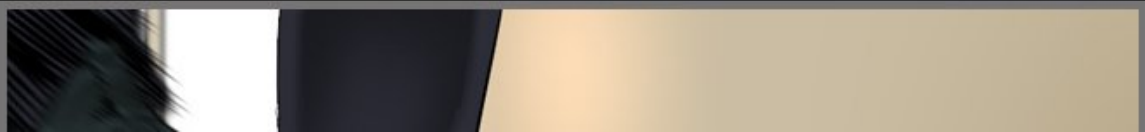


**VLAM**











**FWOP**





ARRÊTEZ  
CETTE SALE  
GARCE !



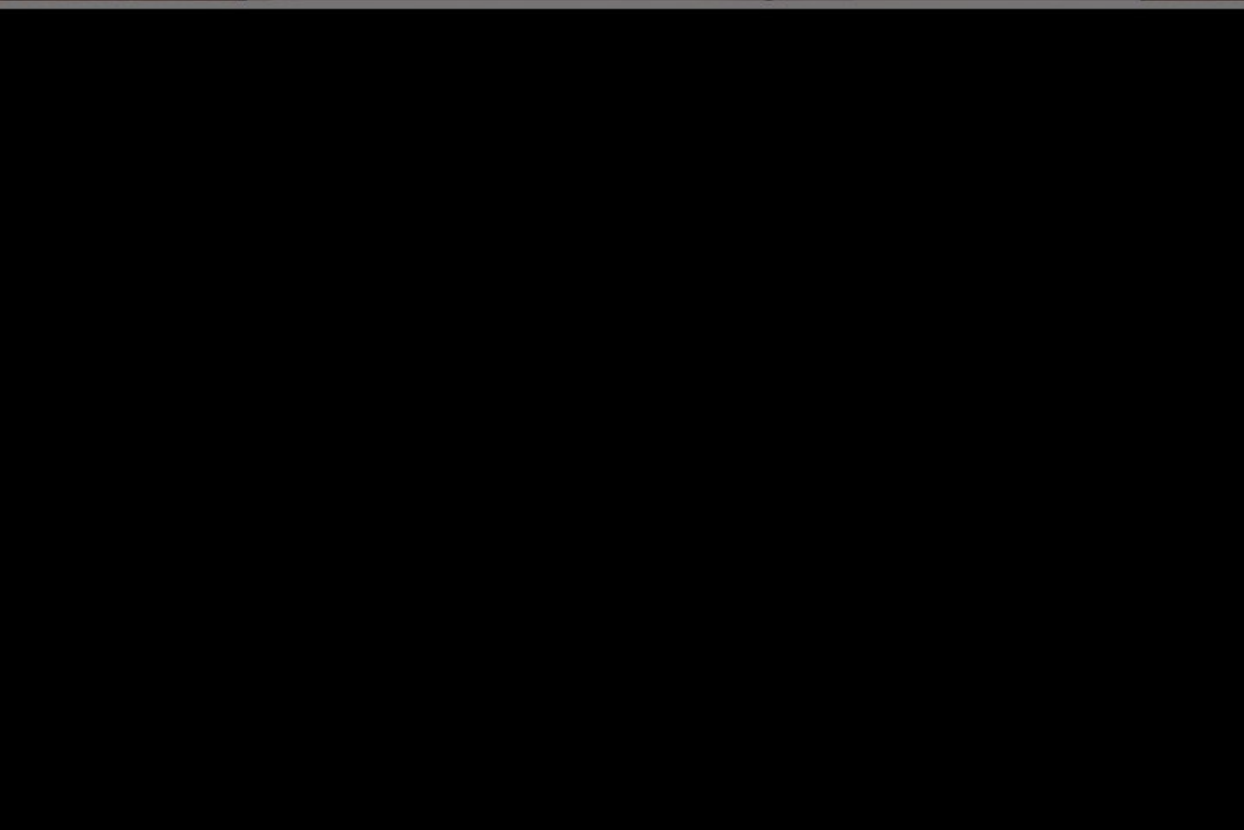


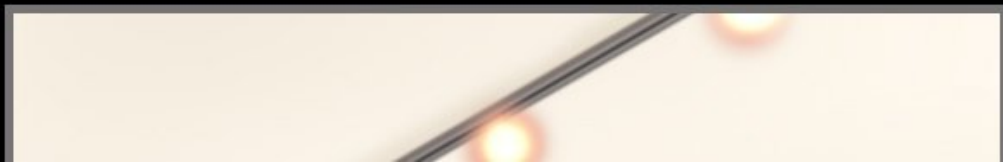






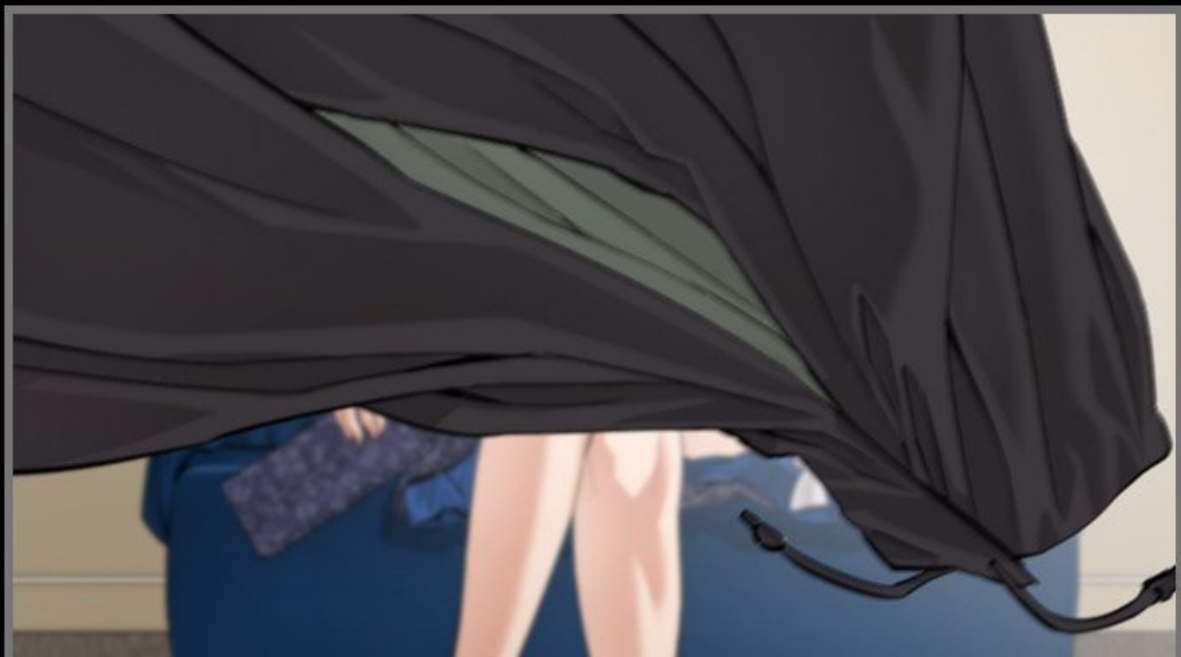










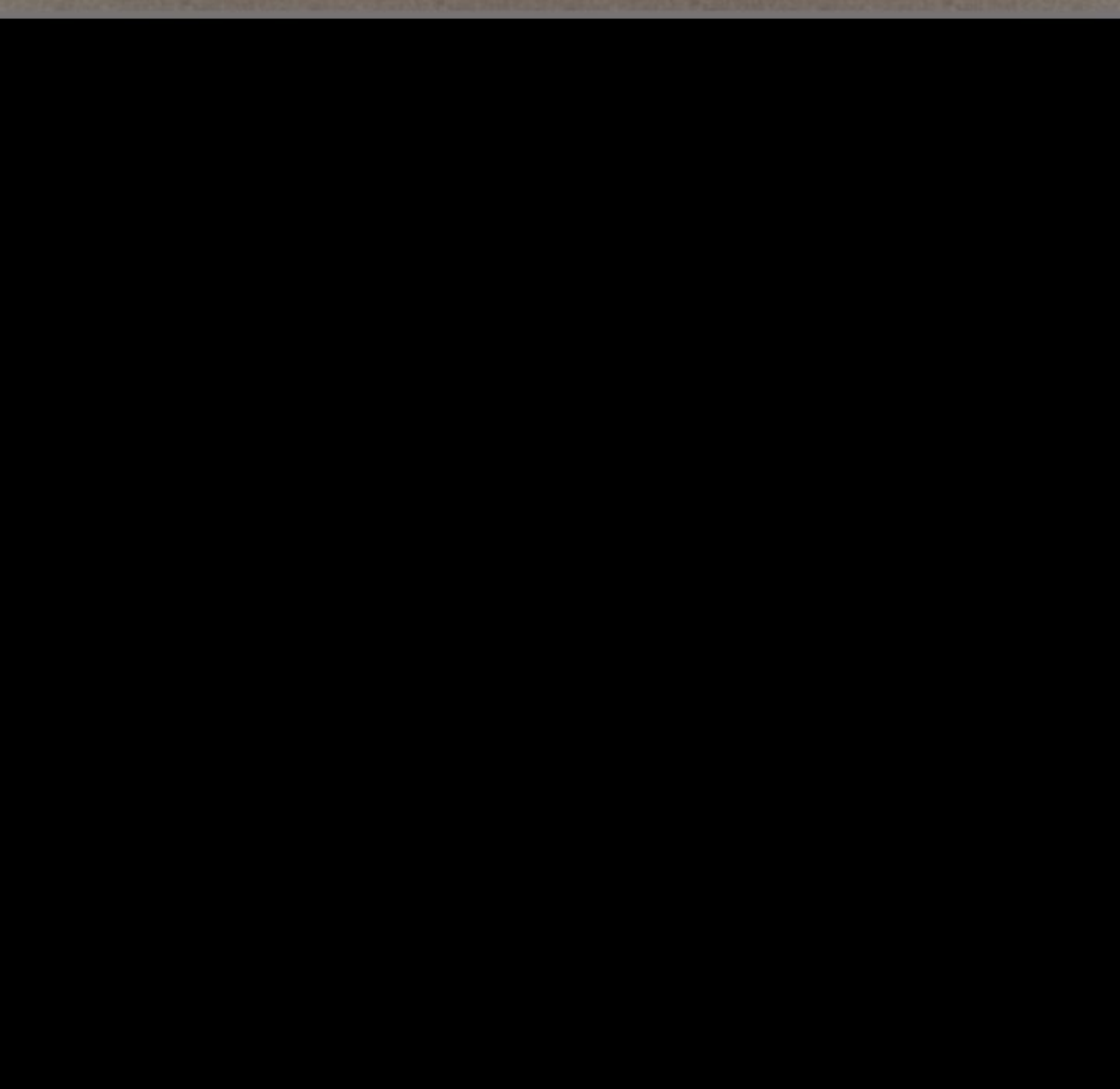




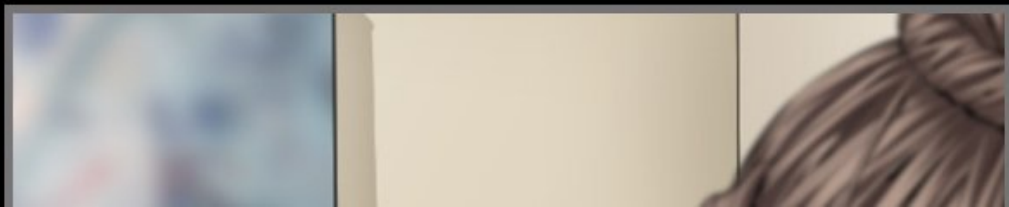












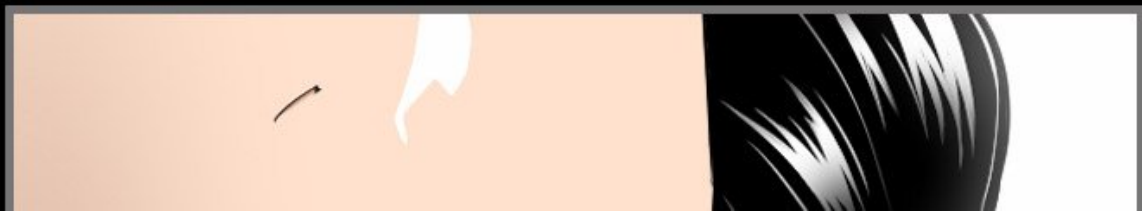
















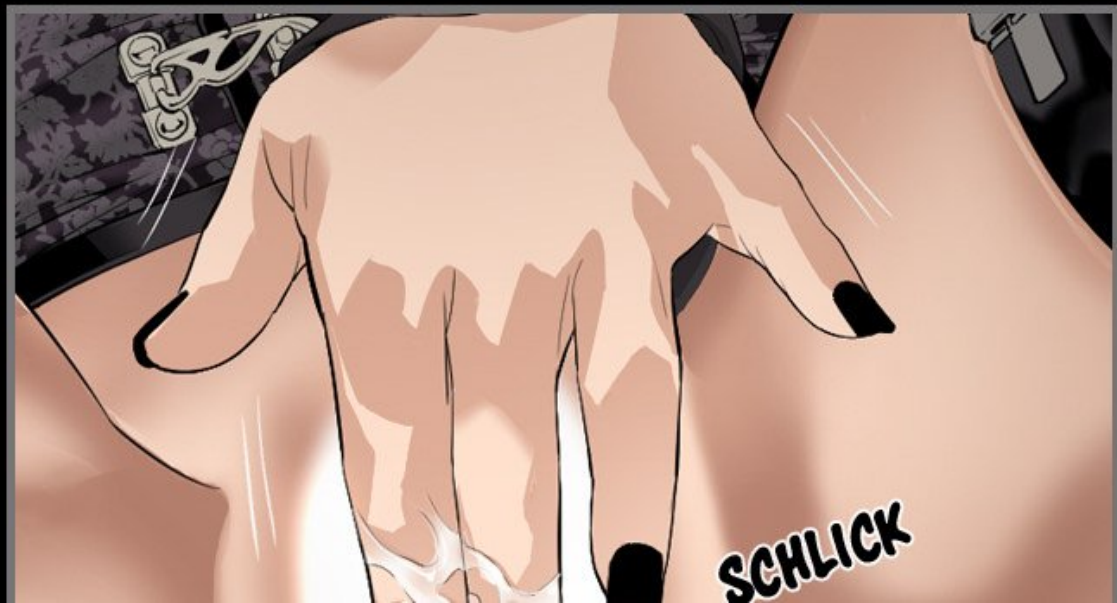


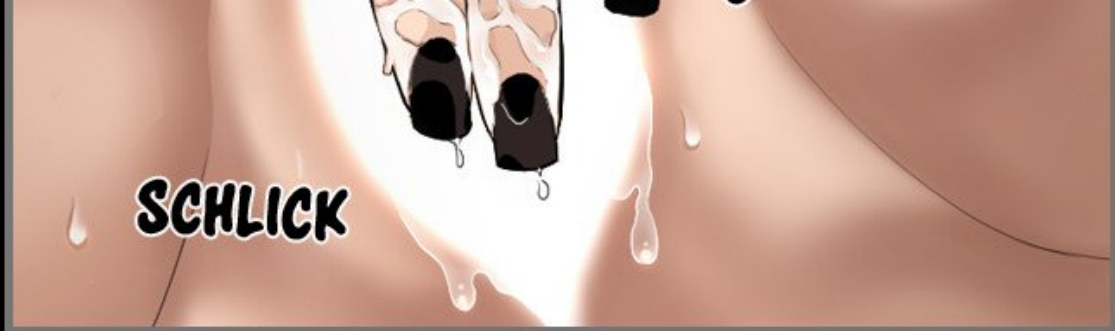
HÉHÉ.

JE VAIS  
TE METTRE

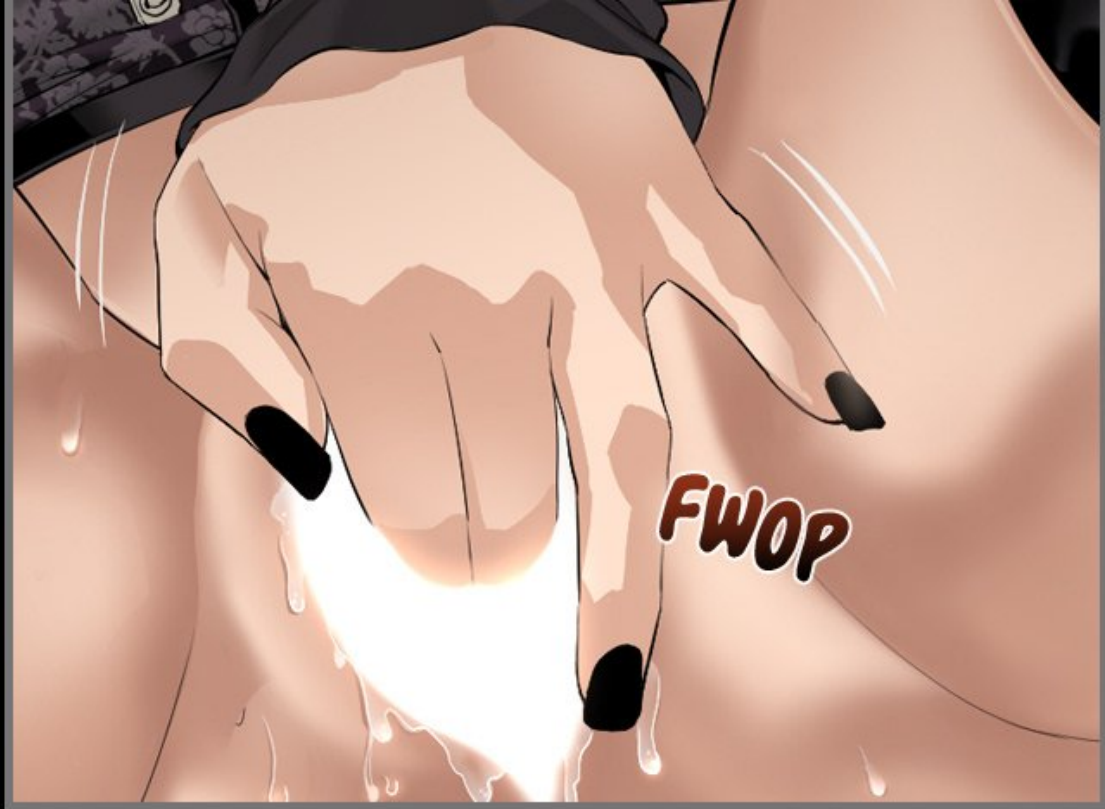
À SEC...













SCHLICK

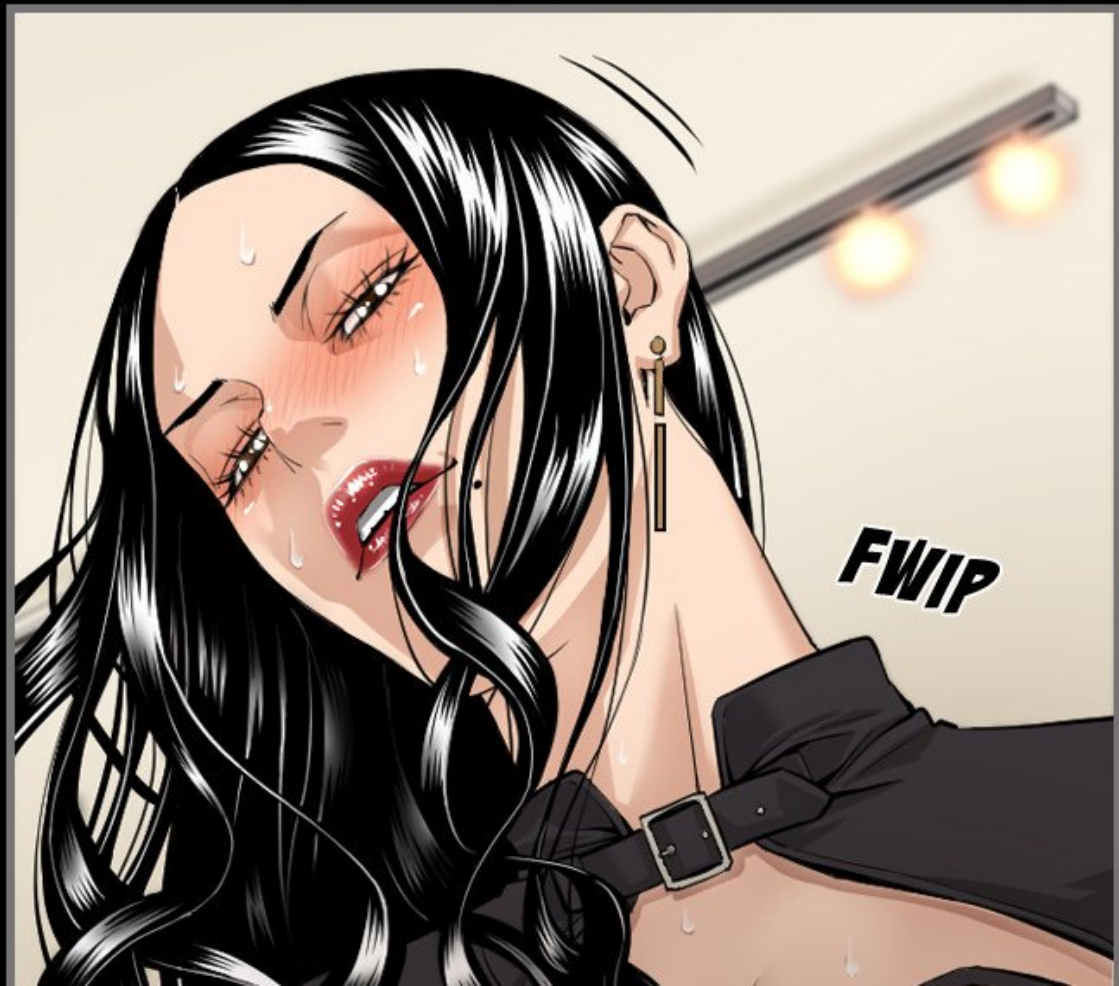
SCHLICK

ANNNN!

ARRRR



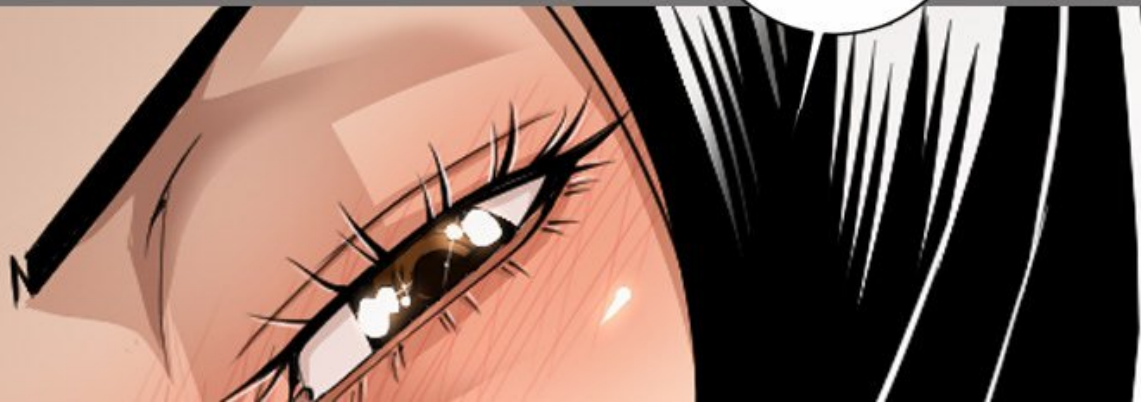




**FWIP**



JE SUIS  
PRÊTE... ET  
TOI ?

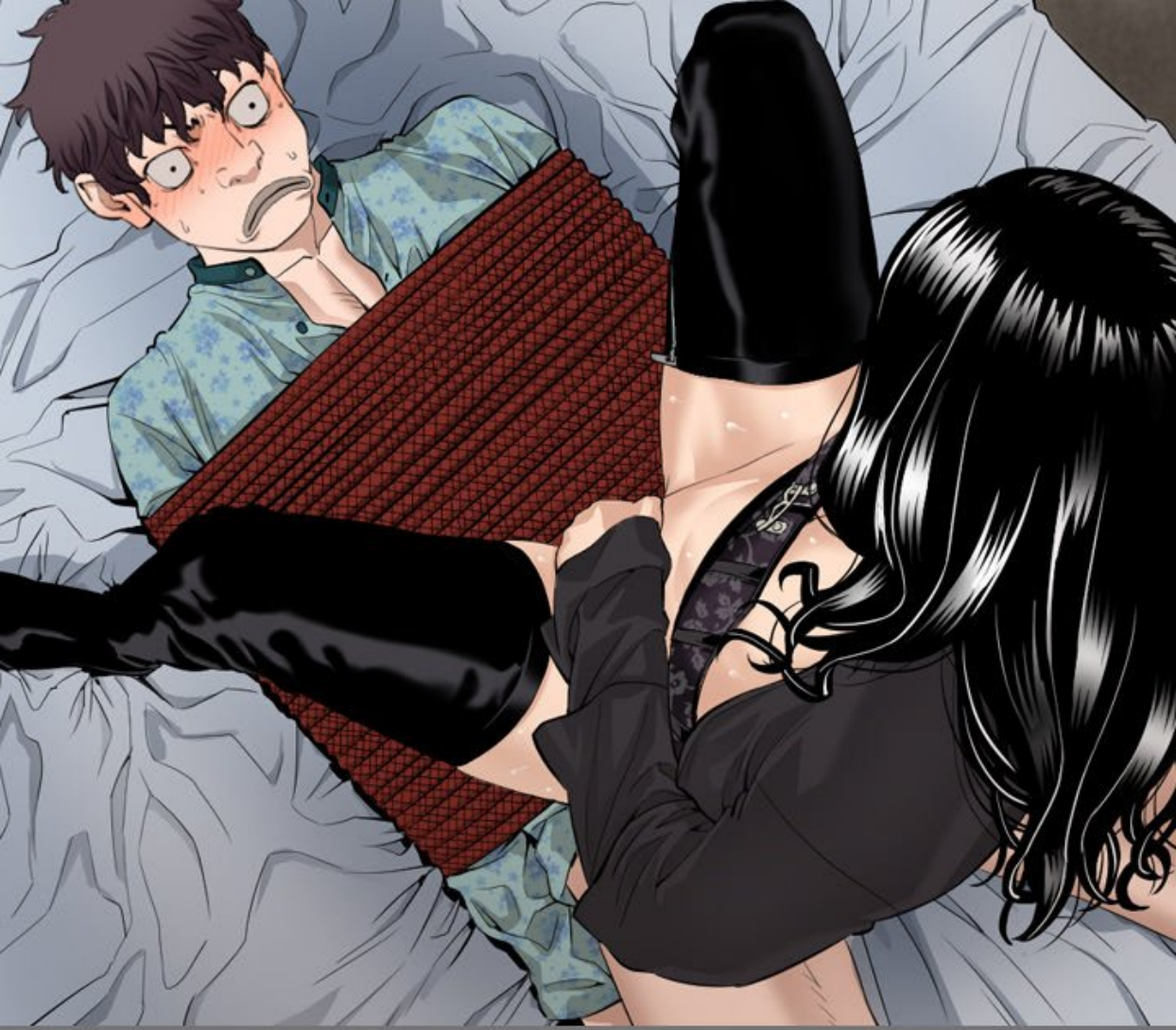








P-PRÊTE...?





**FWIP**



AH...  
NON !

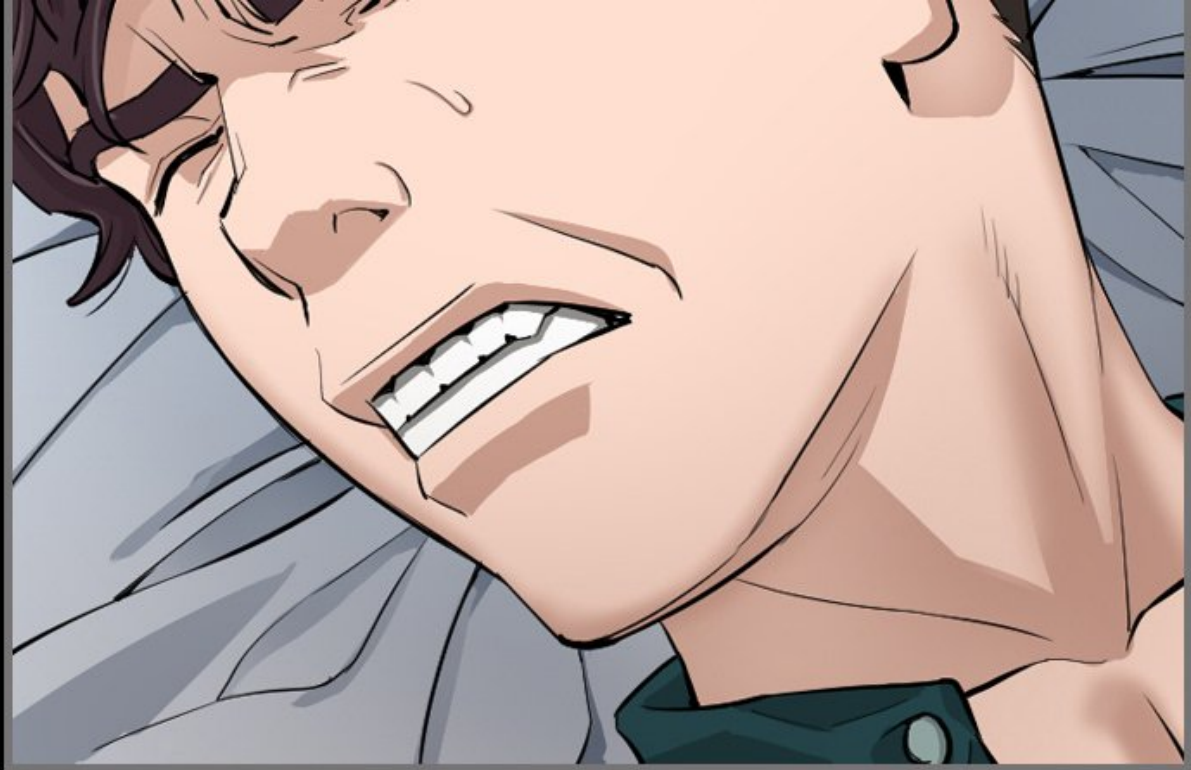




JE DOIS PAS  
ABANDONNER  
AVANT D'AVOIR  
EU SON JOLI  
CUL !

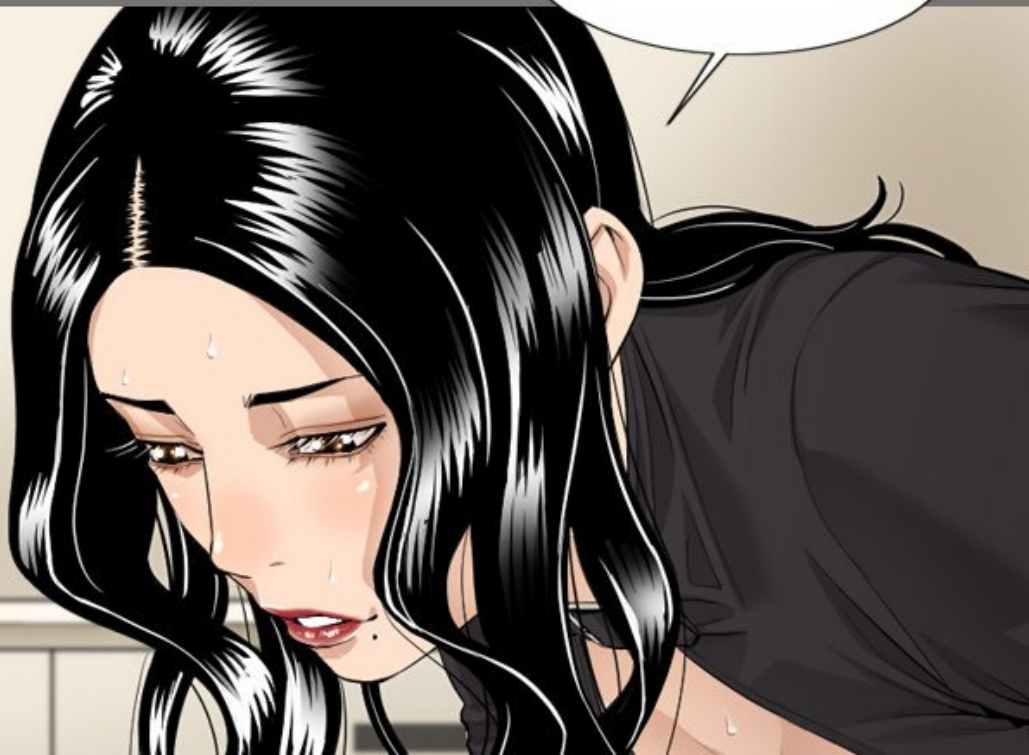
JE SAIS !  
JE VAIS FERMER  
LES YEUX !







TU CROIS  
QUE ÇA VA T'AIDER ?





LASSE  
TOMBER !

MA  
SOMMELIÈRE  
PEUT RENDRE FOU  
N'IMPORTE QUI.





TU LE SAIS  
PEUT-ÊTRE  
PAS...

**PLIC**

MAG



MAIS  
QUAND J'ÉTAIS  
SUR L'ÎLE DÉSERTE,  
JE... HEIN ?

C'EST QUOI

**PLIC**

**PLIC**

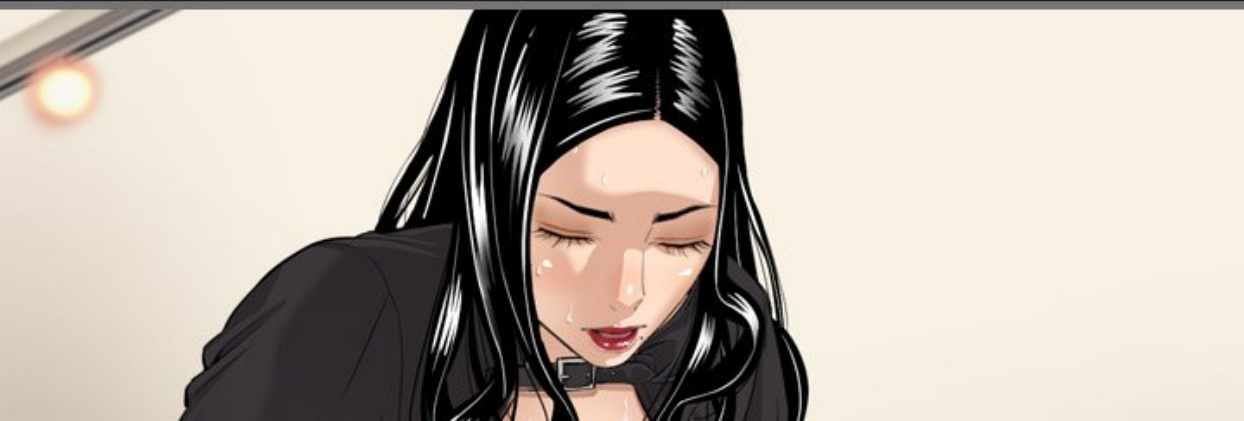
EST QUOI  
CE PARFUM ?  
DU CITRON ?



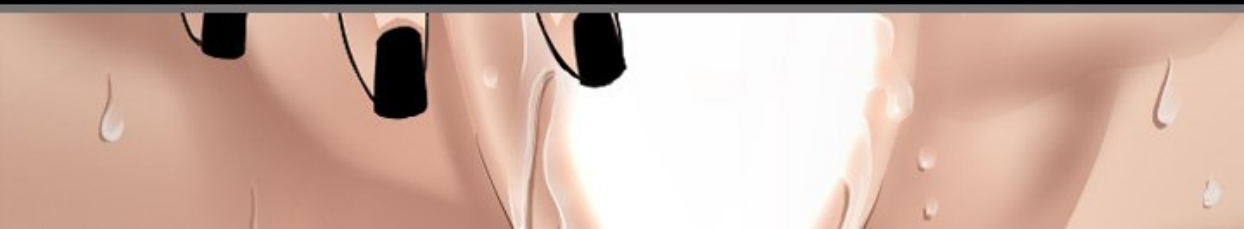








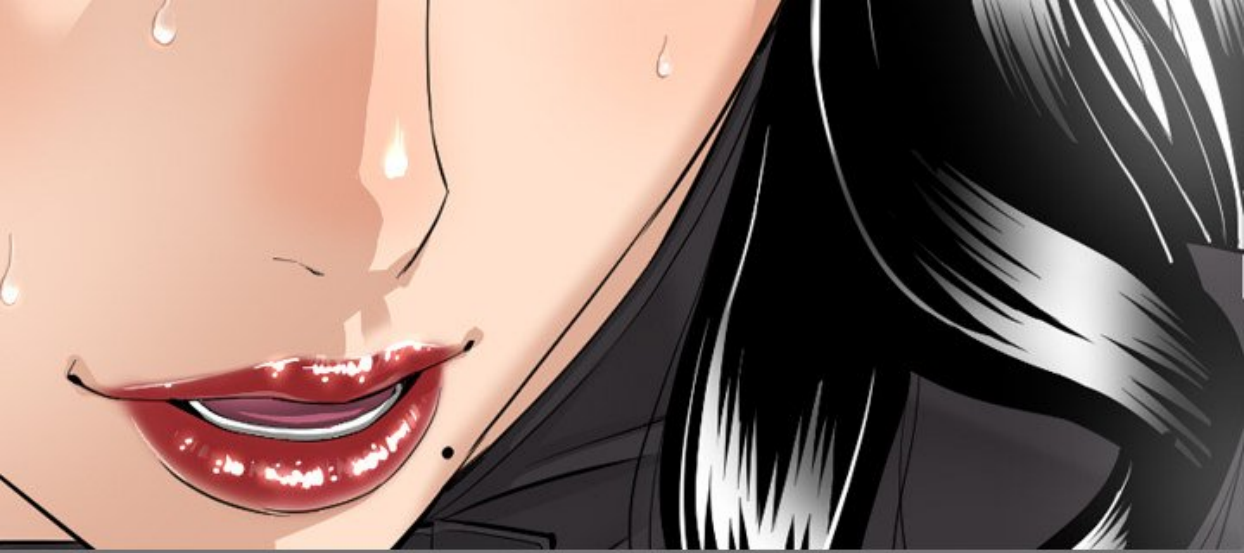


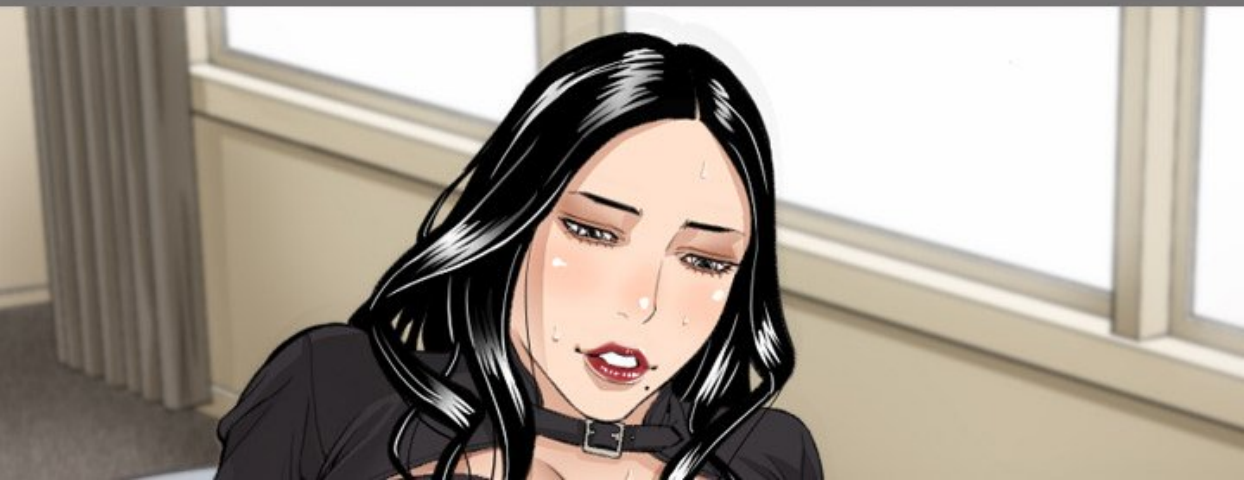




A close-up illustration of a woman's face, focusing on her eyes and a tear on her cheek. She has dark, expressive eyes and long, dark hair. A white speech bubble is positioned in the upper right corner of the frame.

JE VAIS  
FAIRE SORTIR TES  
PLUS PROFONDS  
DÉSIRS.









MMPF !



ARGH!  
CETTE ODEUR

CESTE ODDAR...

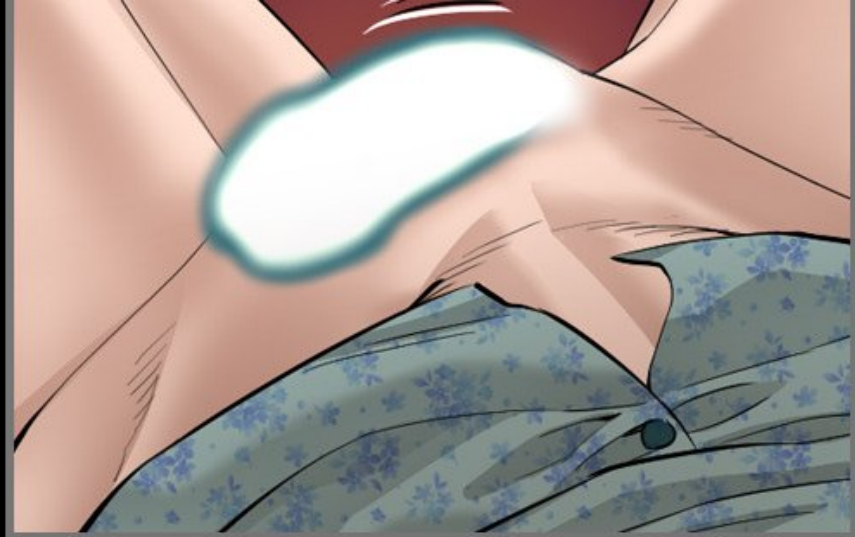
**FLICK**

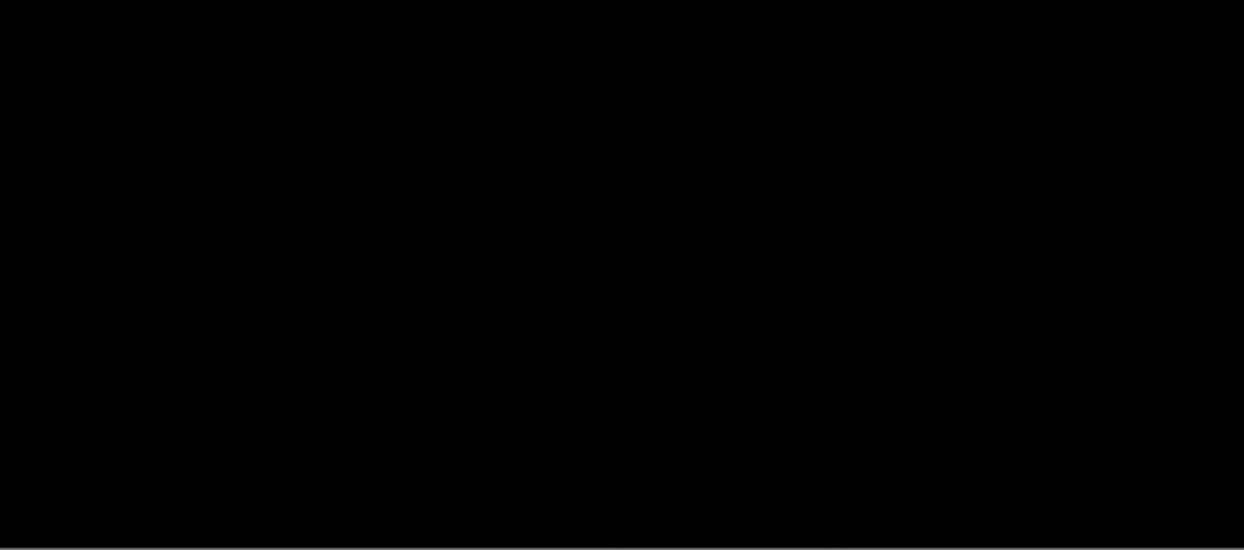
**FLICK**

**FLICK**

SI DOLCE...  
SI SEXY!



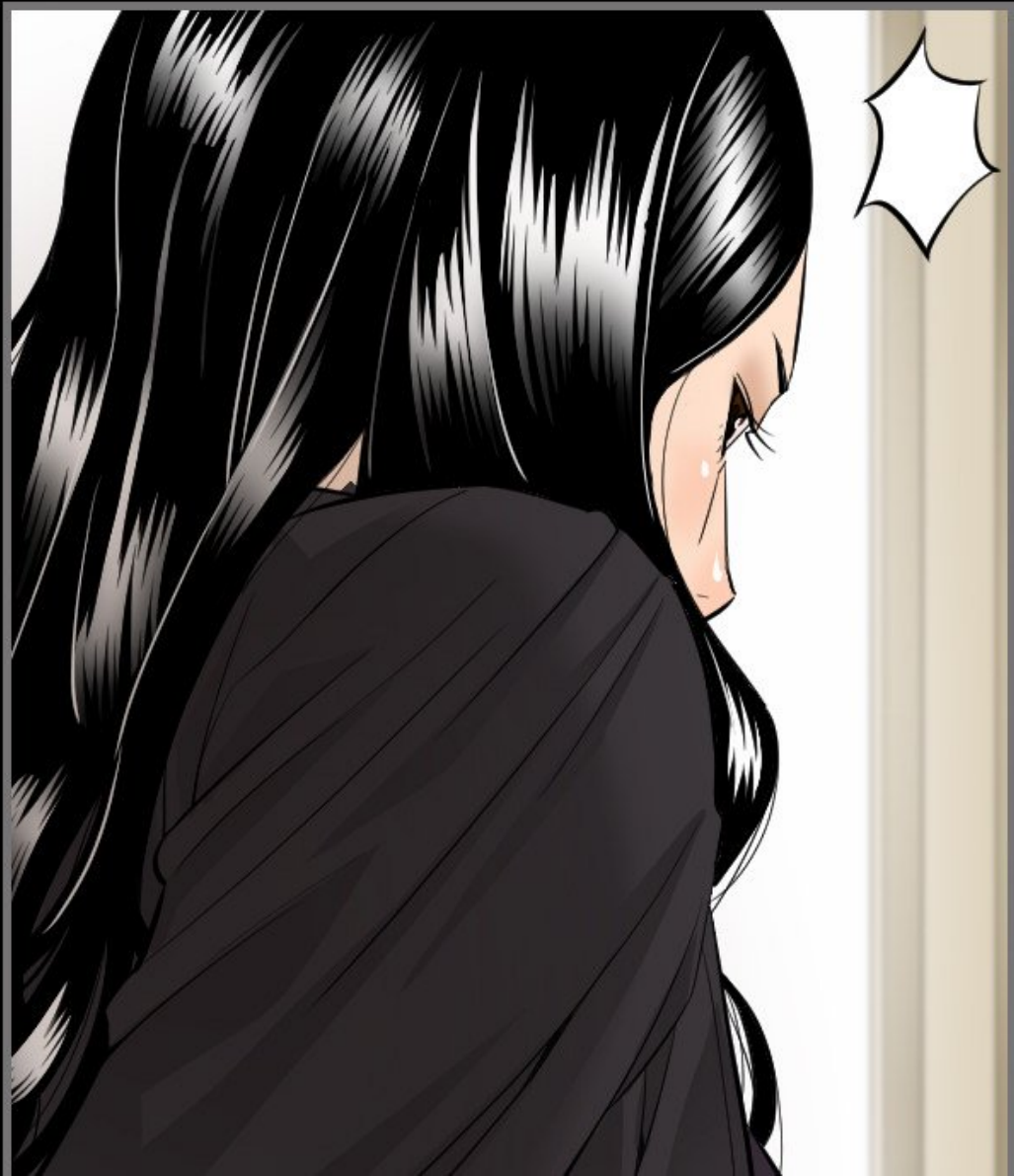


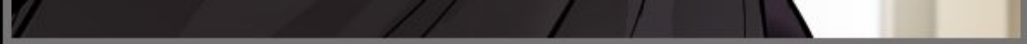


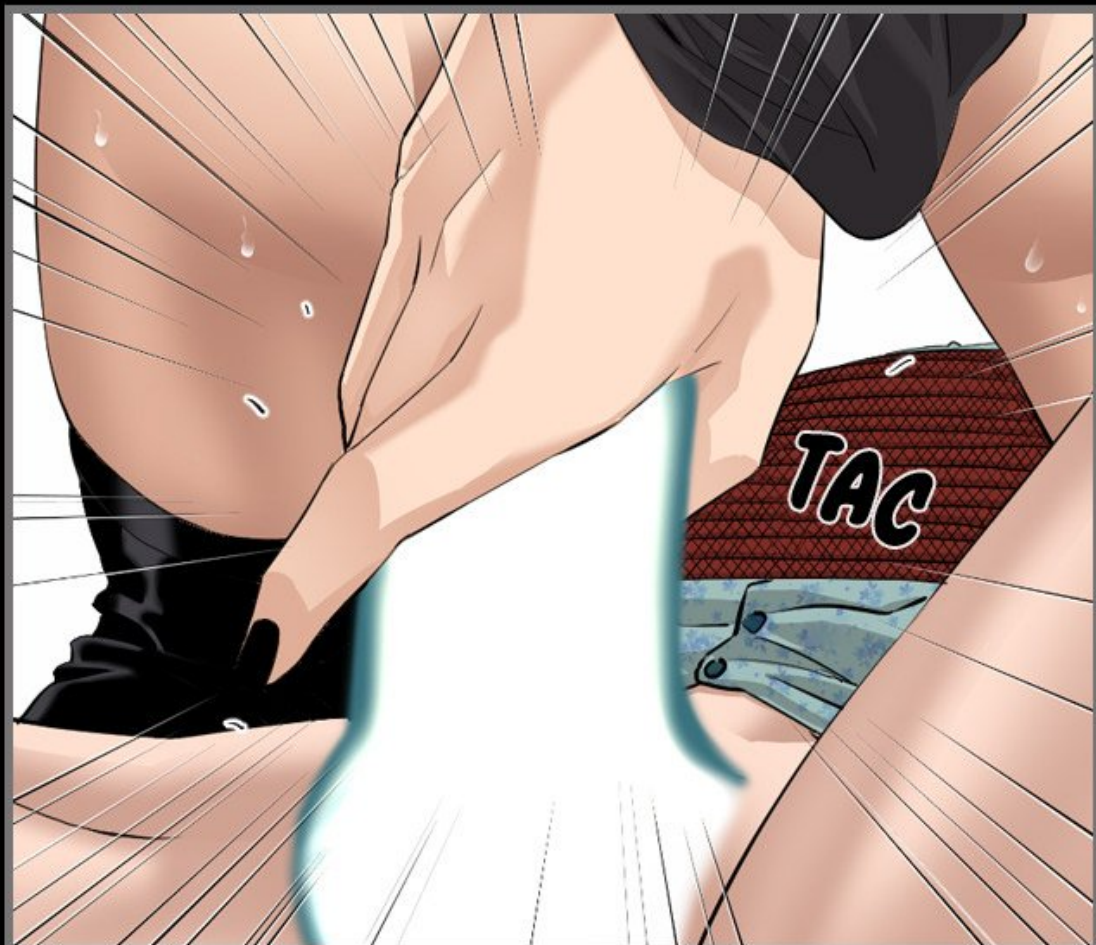
**POOSH**





















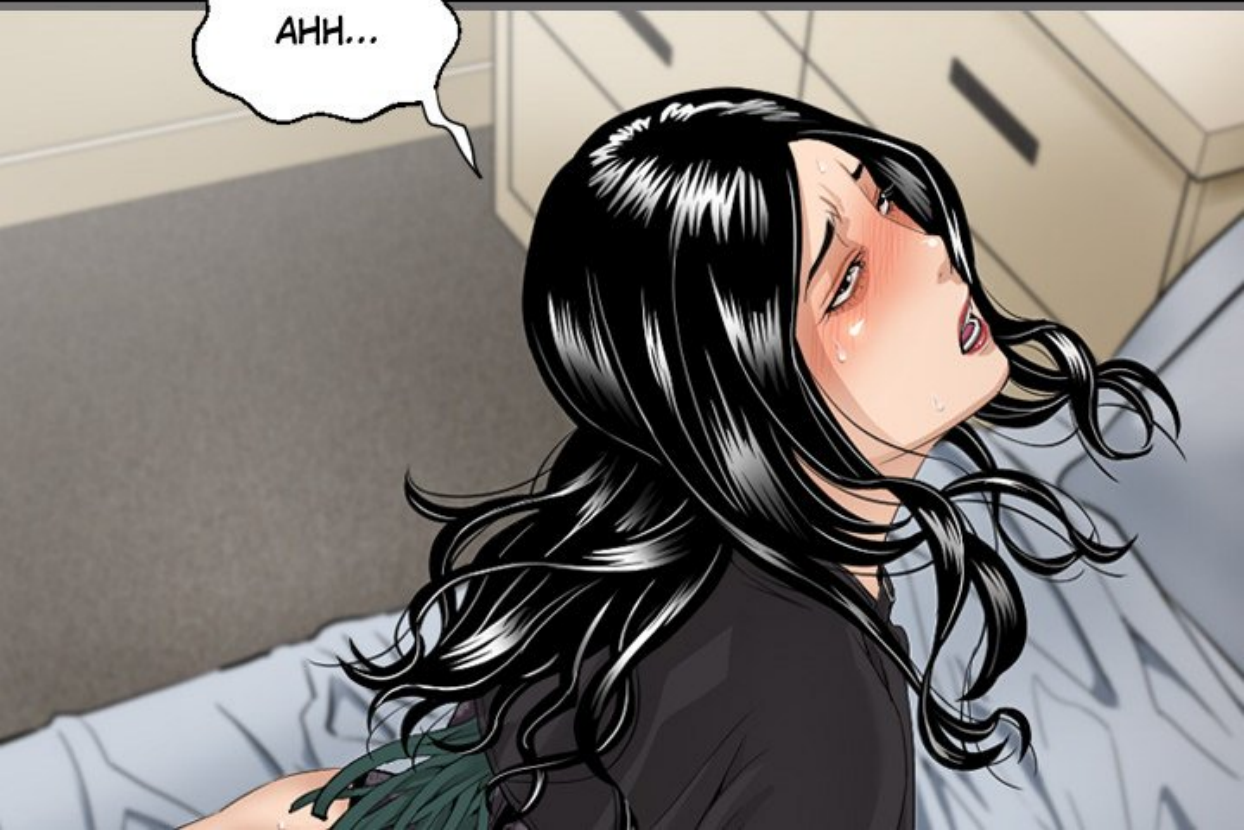




HNN...  
NOOON !

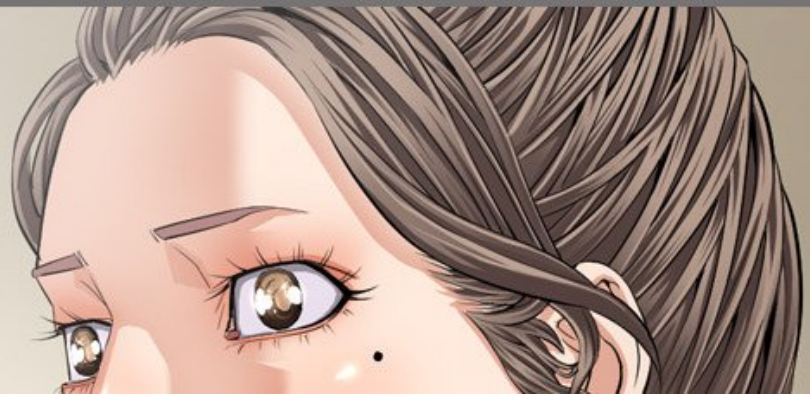
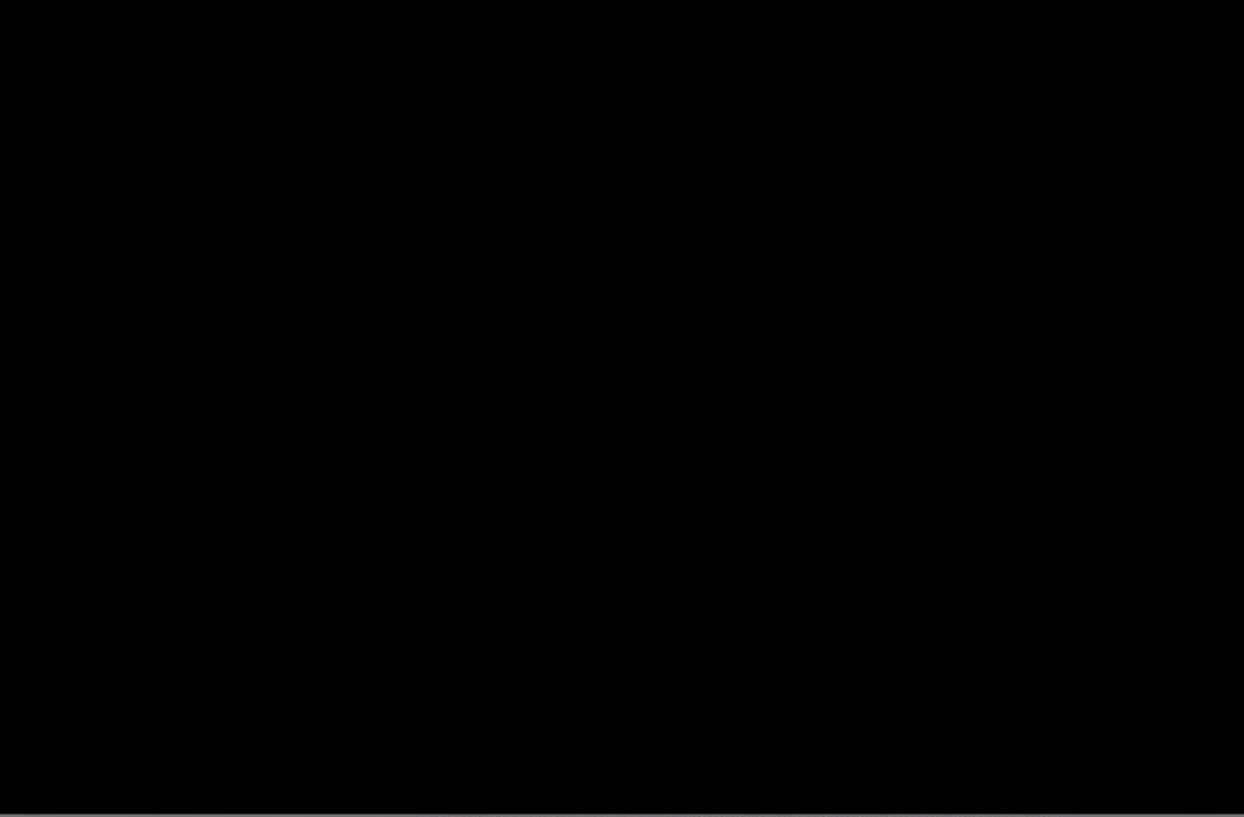


AHH...





ARGH!





À SUIVRE...