



**RUNNING  
MAN**

# MLAAN

Story: JIHOON AHN  
Bild: YEONGPIL KIM



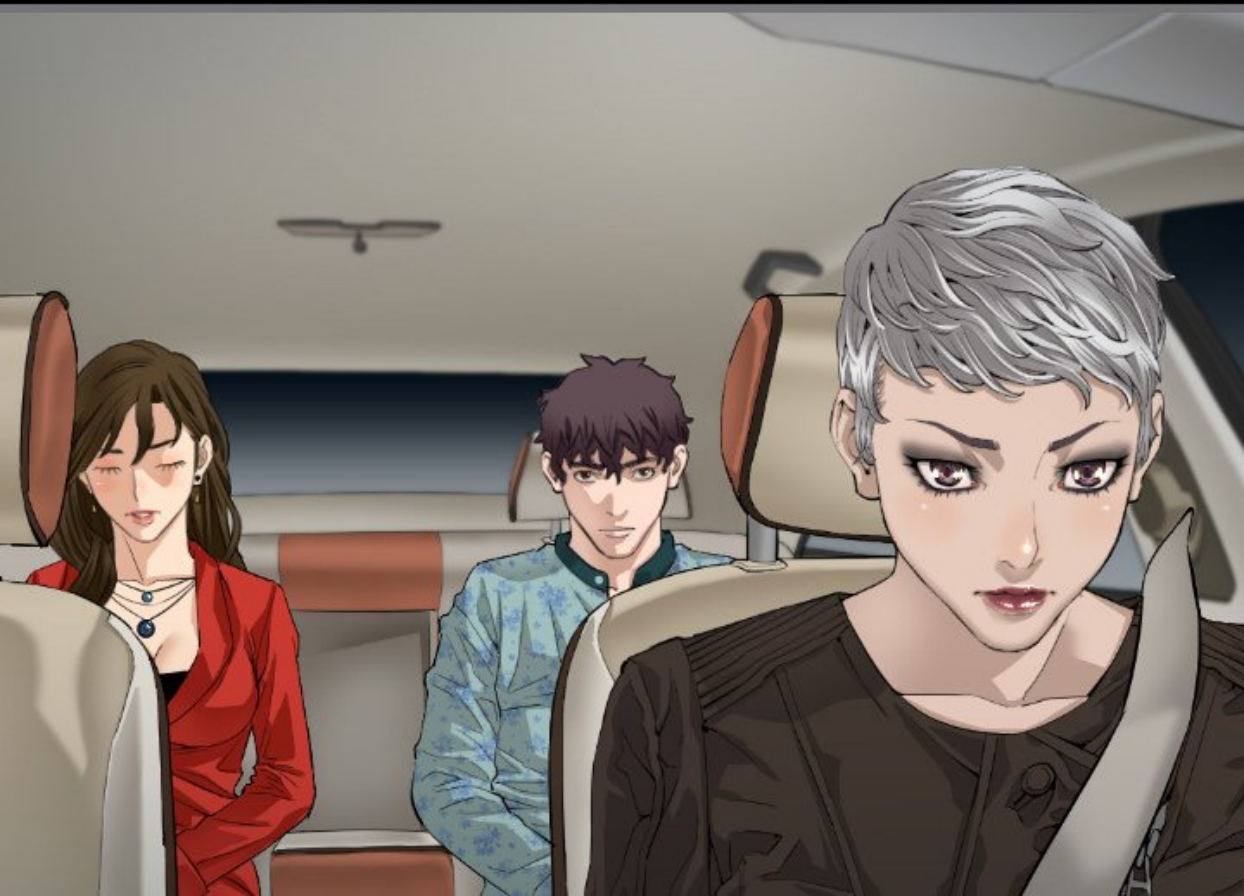


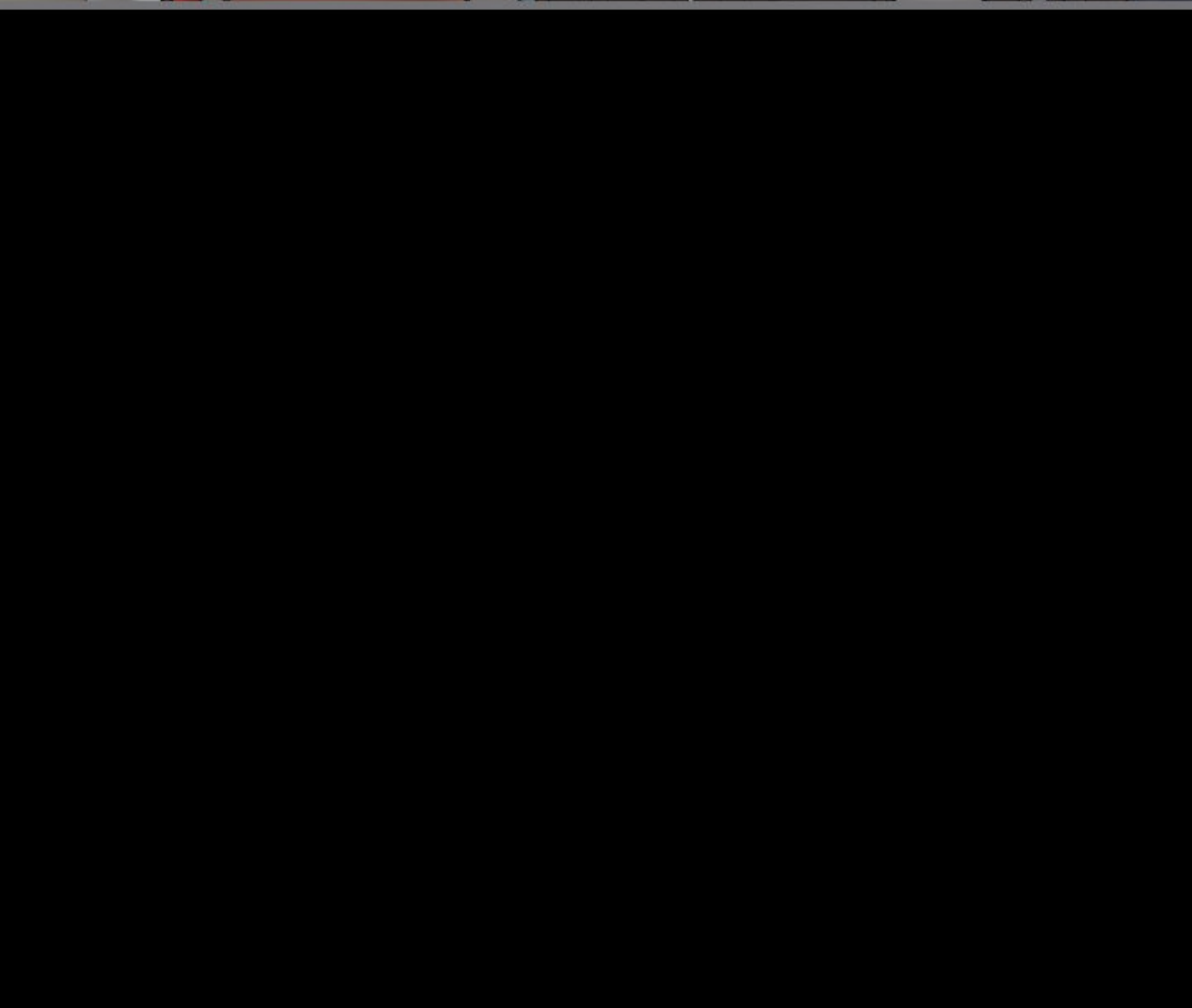






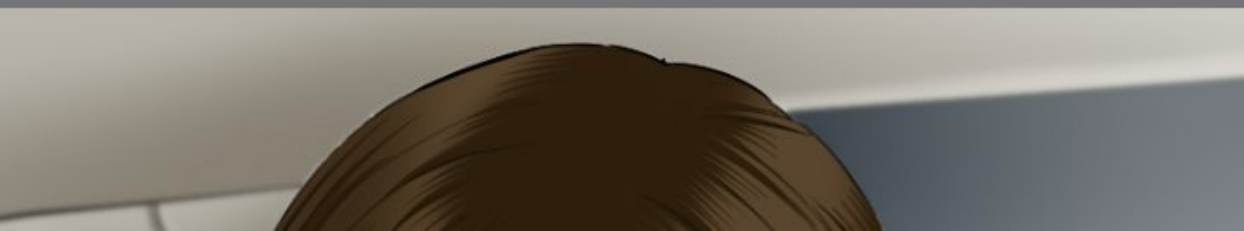
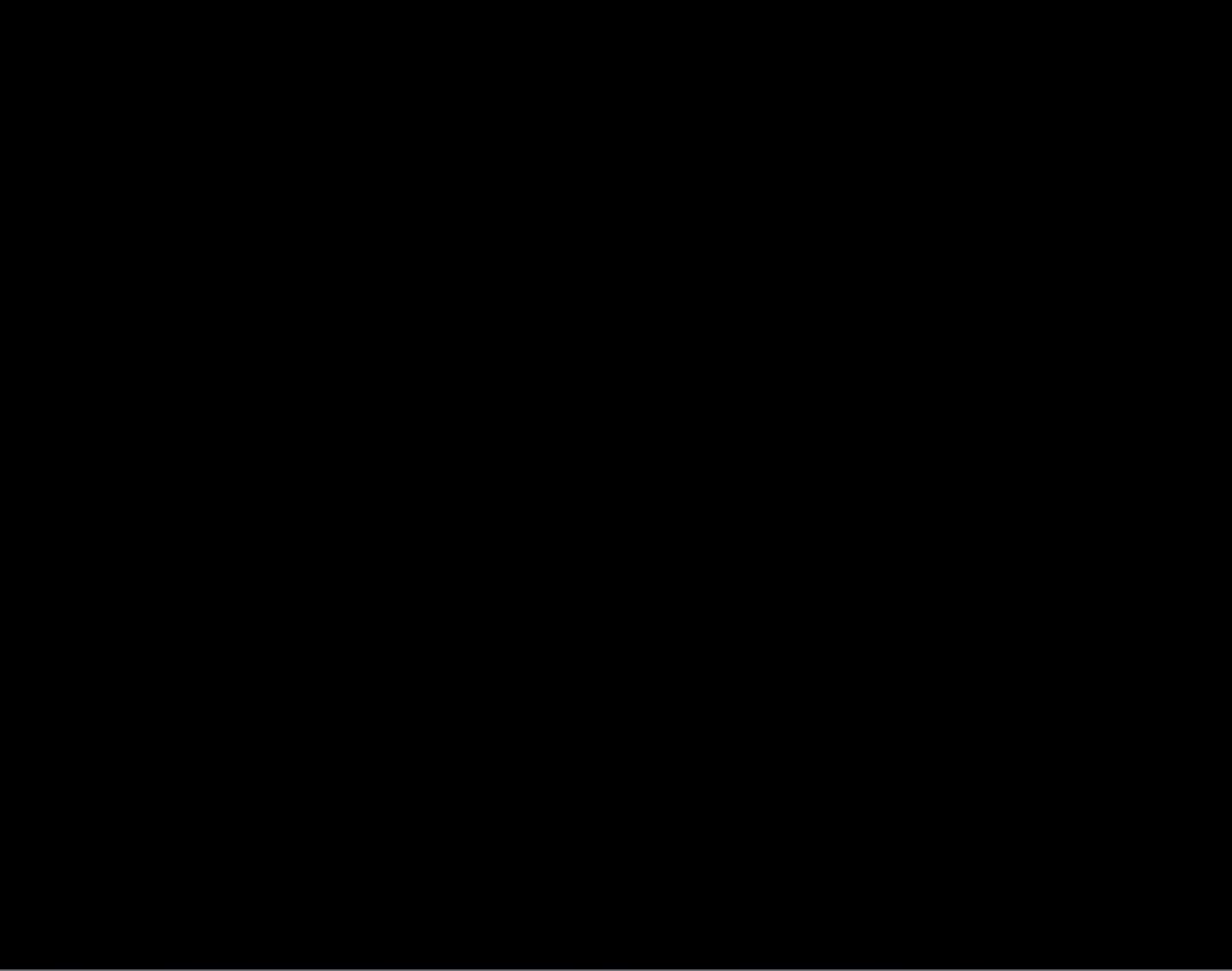














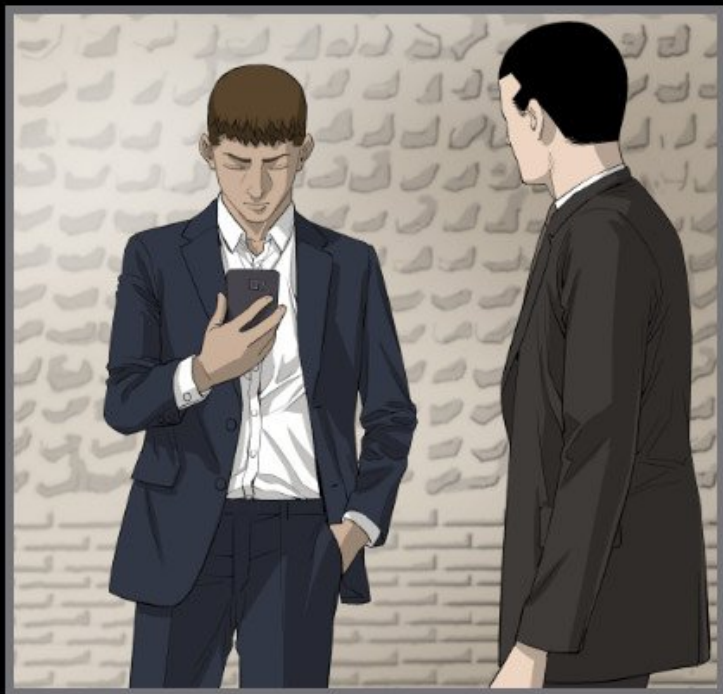














C'EST MOI.



DE QUOI  
AVEZ-VOUS  
BESOIN ?

COMBIEN DE  
FEMMES VOUS

FEMMES VOUS  
AVEZ ?



DIX AU TOTAL,  
M'DAME.





A man with short brown hair, wearing a dark blue suit jacket and a white shirt, is shown in profile from the chest up. He is holding a dark-colored mobile phone to his ear with his right hand. The background is a simple grey gradient with some faint horizontal lines.

ON ARRIVE  
DANS UNE  
DEMI-HEURE.  
ASSUREZ-VOUS  
QU'ELLES SOIENT  
PRÊTES.

TRÈS BIEN.











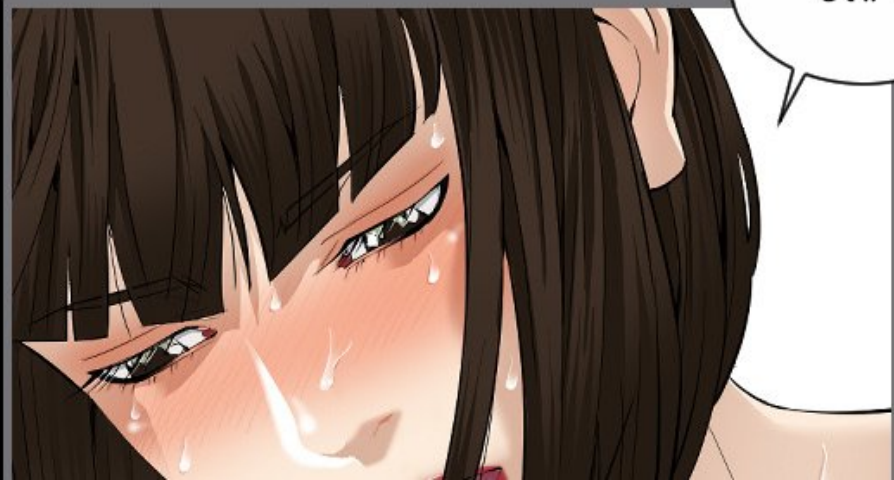
*TOC*

*TOC*










OHI ?



A man with short brown hair, wearing a dark blue suit jacket and a white collared shirt, is shown in profile, looking towards the left. He has a serious expression. A speech bubble is positioned above his head, containing text. The background is a simple greyish-blue wall with a vertical line suggesting a doorway or window frame.

LE GROUPE DE  
HELEN VA BIENTÔT  
ARRIVER.

A white speech bubble with a black outline, containing two lines of text. The text is in all caps and appears to be a question or a statement related to the scene.

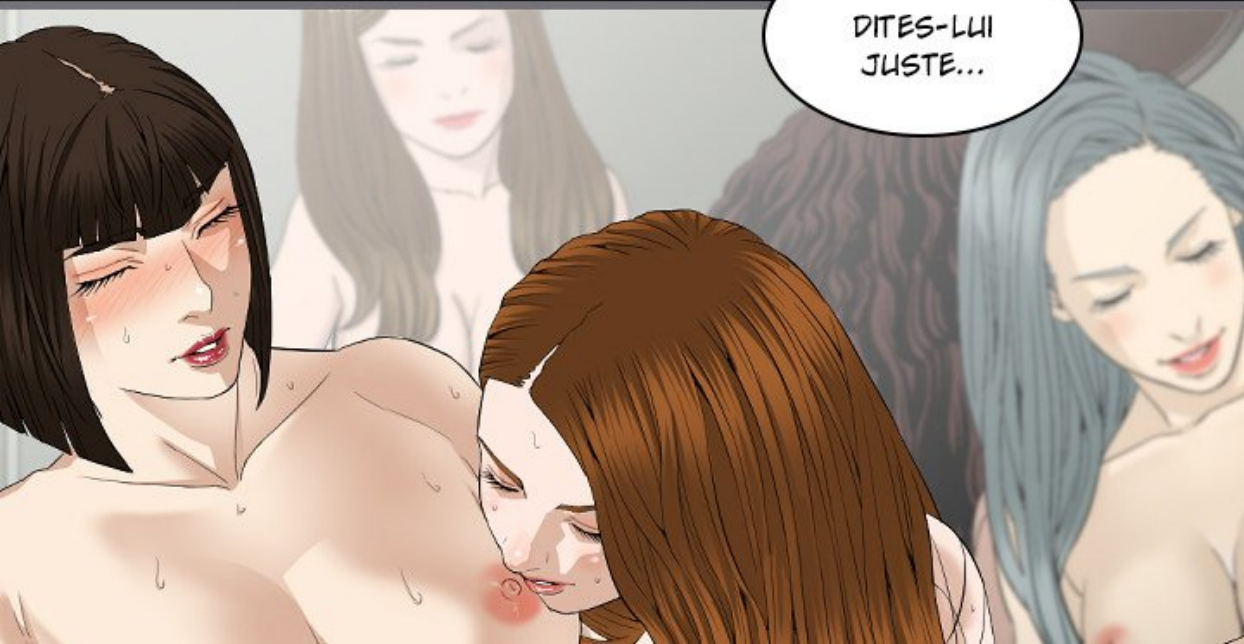
VOUS  
AVEZ BESOIN

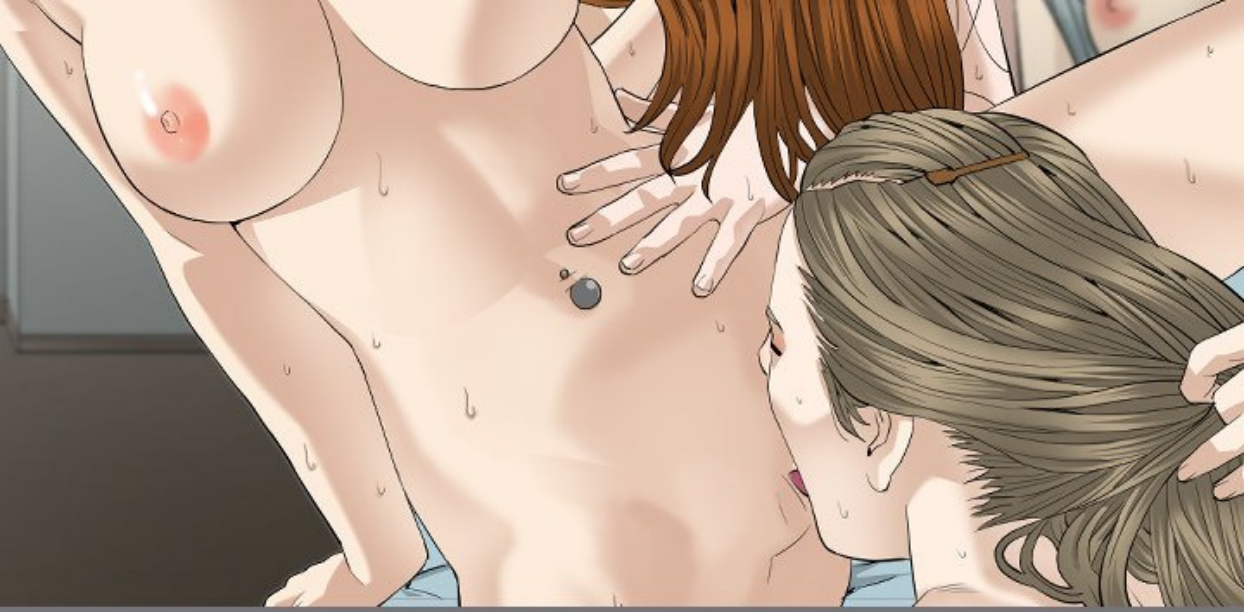
AVEZ-VOUS  
DE QUELQUE  
CHOSE ?



NON.

DITES-LUI  
JUSTE...







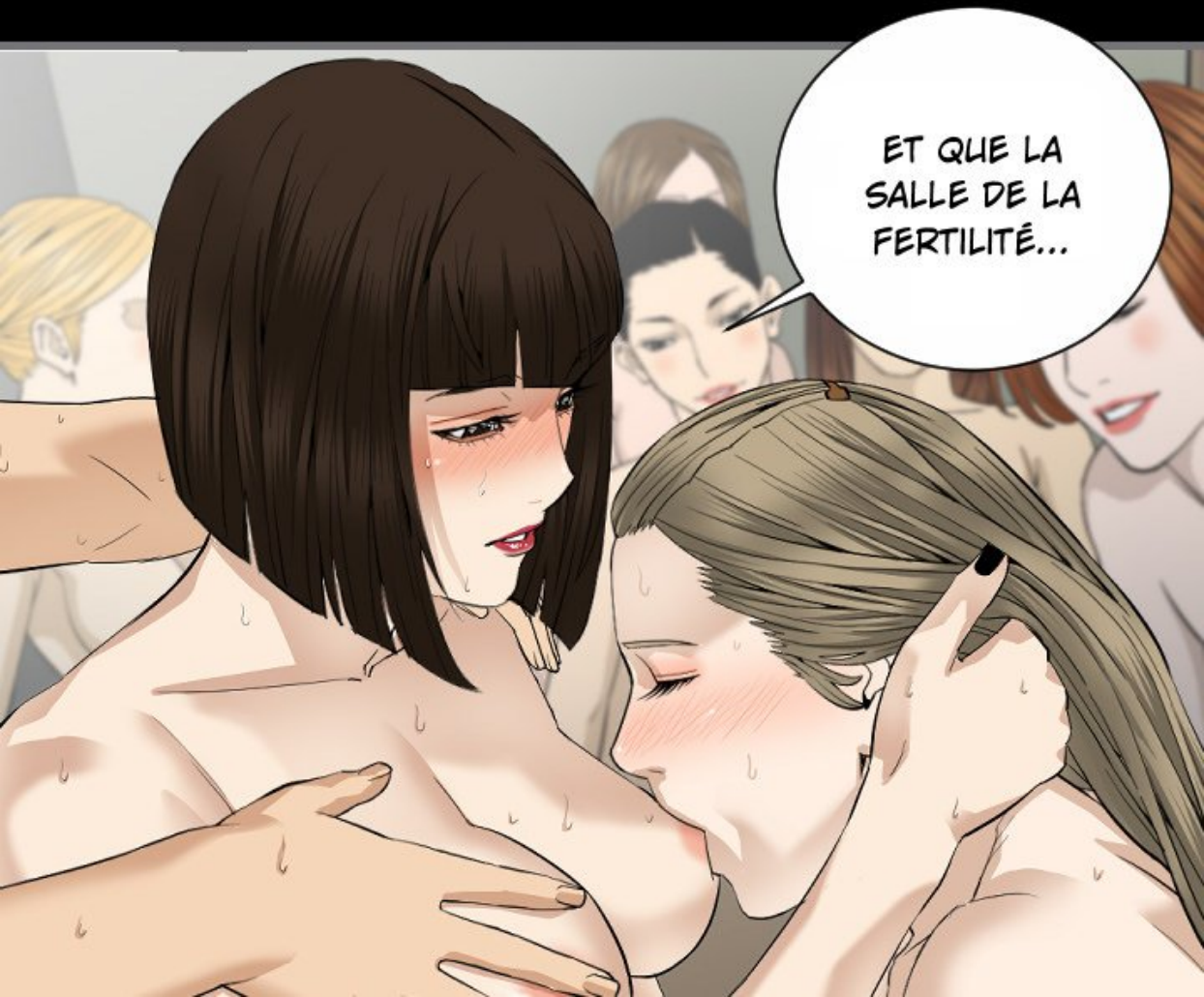
QUE TOUTES LES  
FEMMES SONT EN  
TRAIN D'OVULER,  
COMME CONVENU...

AH !

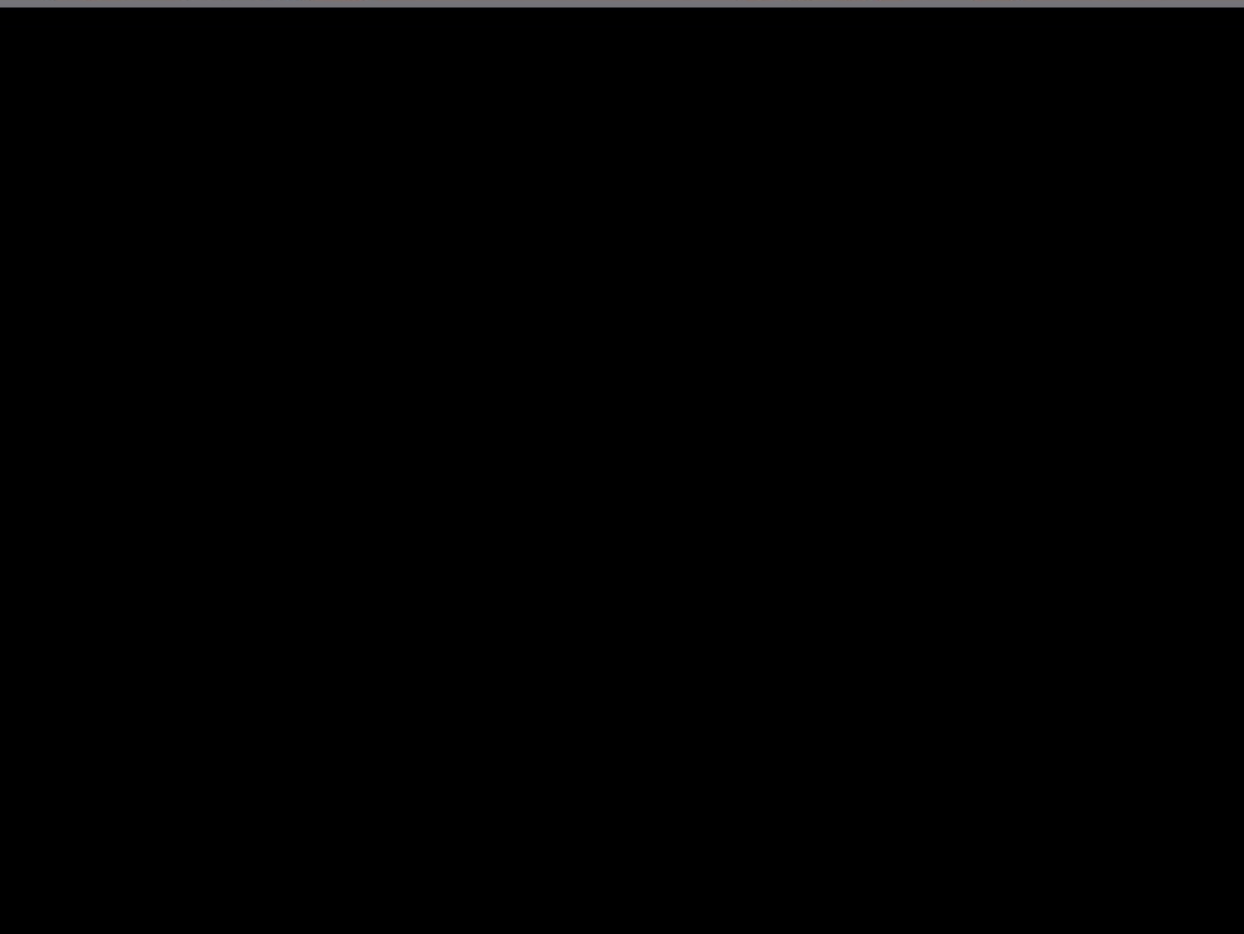




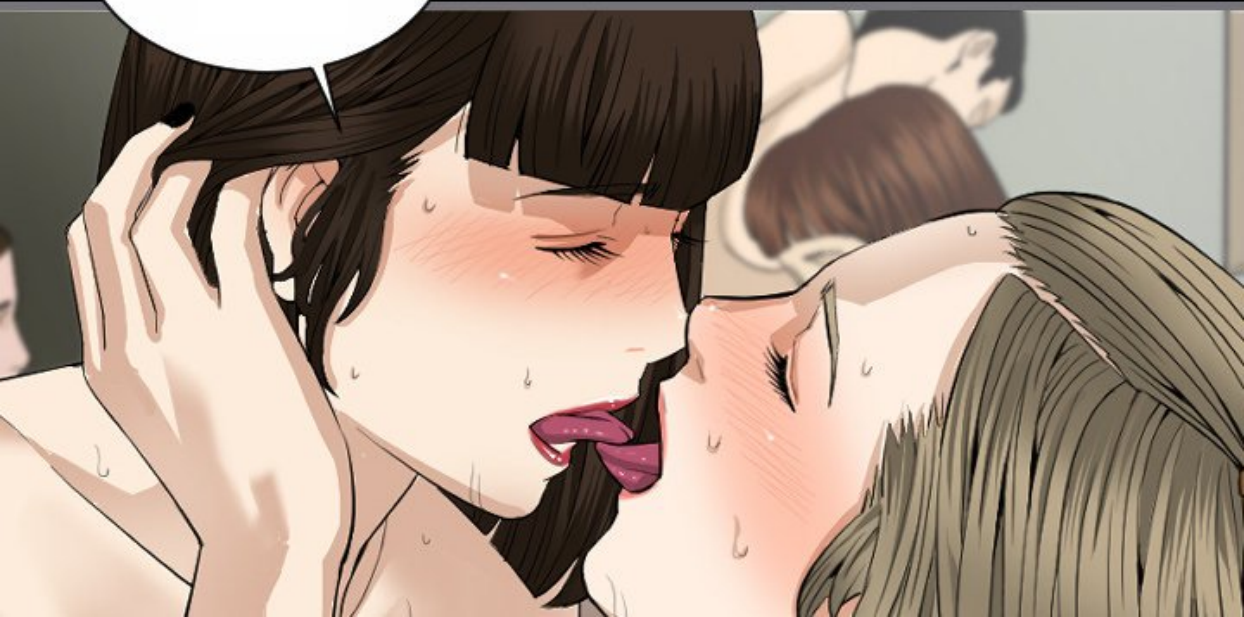




ET QUE LA  
SALLE DE LA  
FERTILITÉ...



... EST PRÊTE.





A comic panel with a black background. In the bottom right corner, the top of a character's head with brown hair is visible. A white speech bubble with a black outline points to the character. The speech bubble contains the text "TRÈS BIEN." in black, uppercase letters.

TRÈS  
BIEN.



**TAP**

A stylized illustration of a building facade. The word "TAP" is written in large, bold, black letters on a light blue wall. To the right, there is a glass door or window with a wooden frame. The interior of the building is visible through the glass, showing wooden paneling and a ceiling. The overall style is clean and modern.





**TAP**

**TAP**

**TAP**

MONSIEUR.

QU'EST-CE  
QUI SE PASSE  
DANS CETTE  
PIÈCE ?





CONCENTRE-TOI  
SUR TON TRAVAIL.





A grayscale illustration of a staircase with a wooden railing. The railing has decorative balusters. At the top of the stairs is a door with vertical panels. The scene is lit from the left, creating soft shadows.

**TAP**

**TAP**




**TAP**

QUAND ILS  
ARRIVERONT...







A comic book panel showing a man with short brown hair, wearing a dark blue suit jacket, a white shirt, and a light-colored tie. He is looking to his left with a surprised expression. The background is a simple hallway with a doorway in the distance. A speech bubble is positioned above his head.

OH, C'EST  
VOUS...







**FWACK**







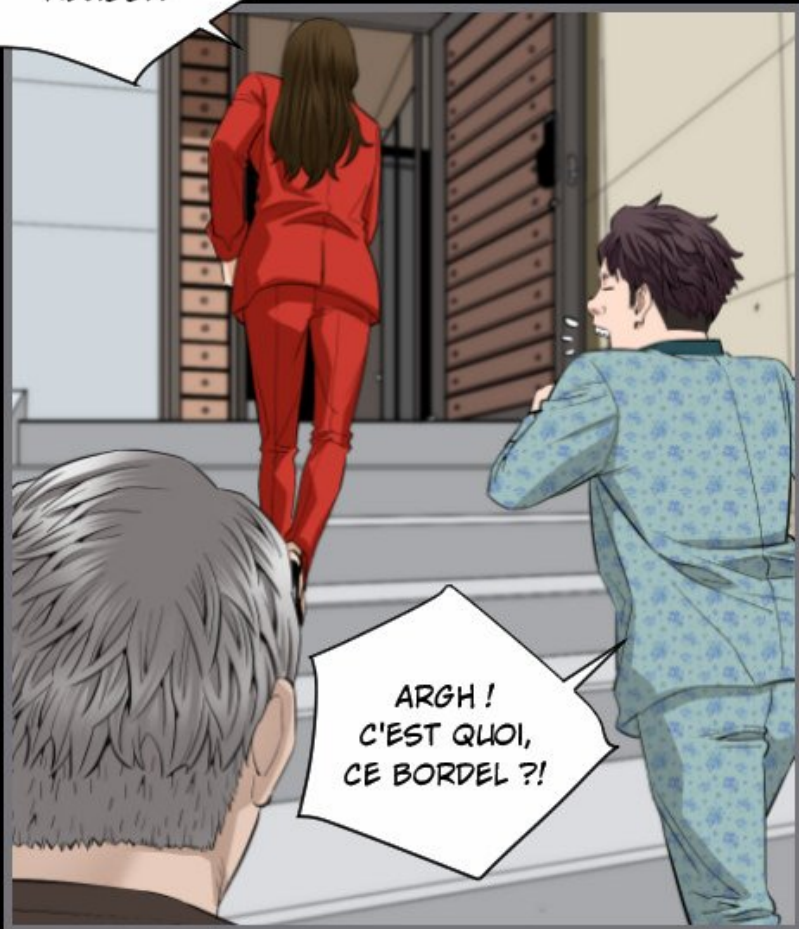




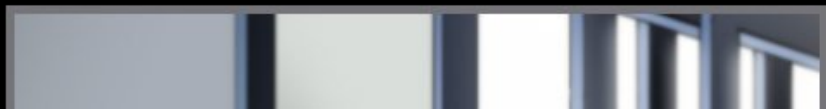




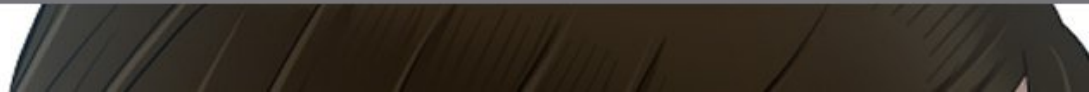
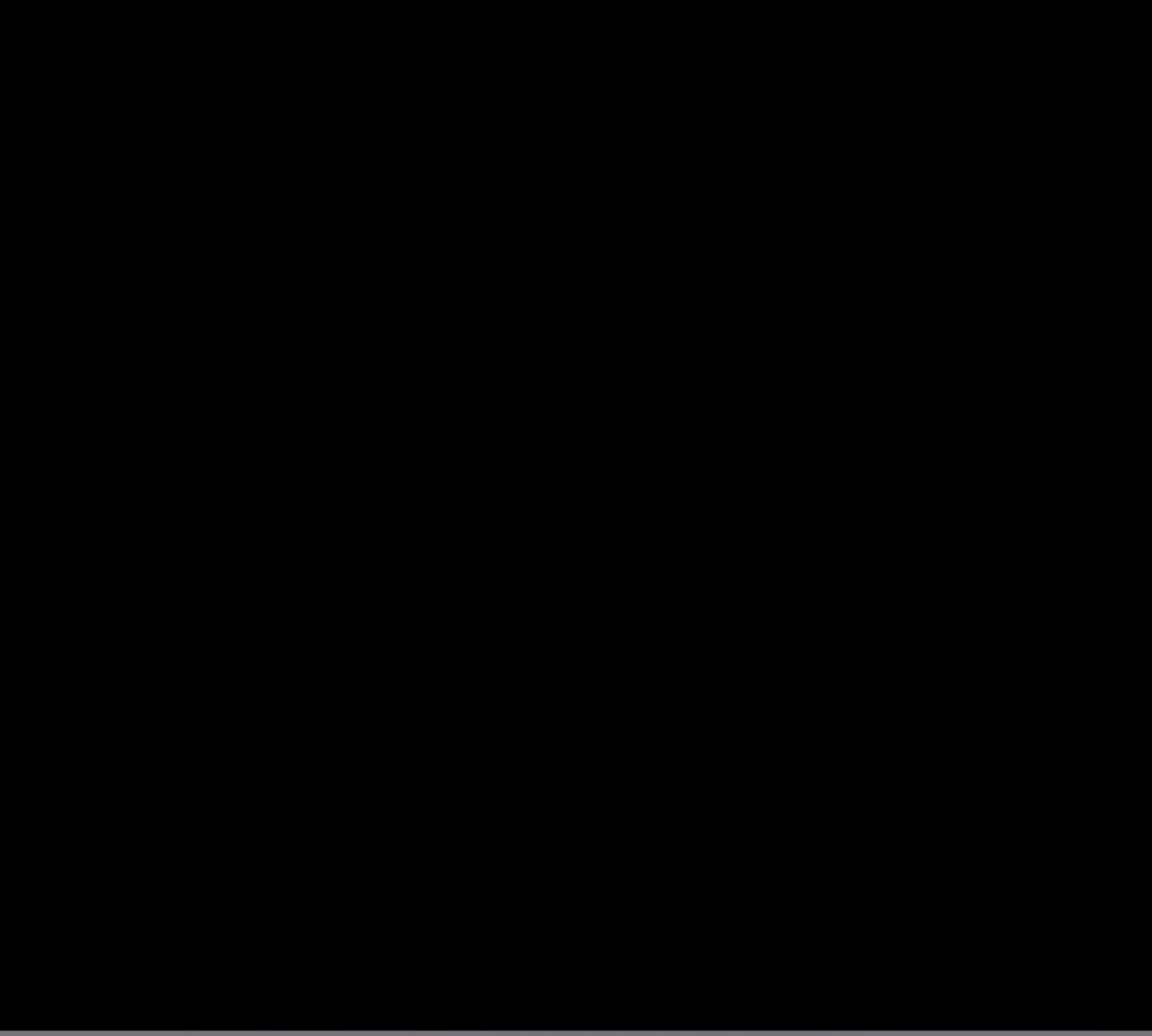
ON A  
RÉUSSI !



ARGH !  
C'EST QUOI,  
CE BORDEL ?!













ARGH...





QU'EST-CE  
QUI S'EST  
PASSÉ ?

MADAME...



C'EST  
MLLE IRENE !  
ELLE...





ELLE A  
VOLÉ TOUTES  
LES FEMMES.



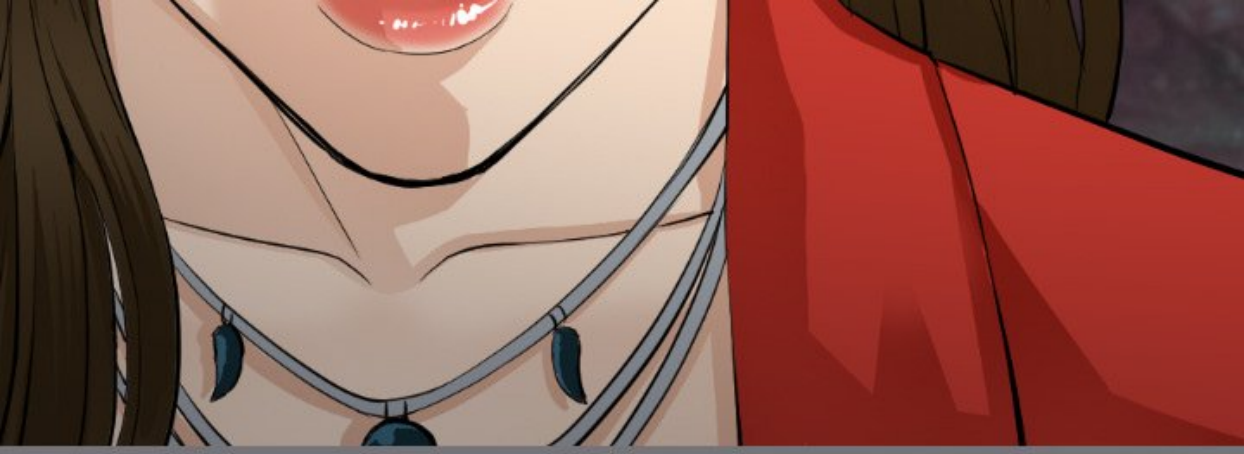






A close-up illustration of a woman's face, showing her eyes, nose, and mouth. She has dark hair and is wearing a red top and a blue earring. A bright, glowing speech bubble is positioned in the upper right corner of the frame.

ON DIRAIT  
QU'ELLE A  
PAS L'INTENTION  
D'ABANDONNER.



OUBLIE  
PAS QUE TON  
CUL EST À  
MOI !

OUBLIE  
PAS DE ME  
PAYER.

...

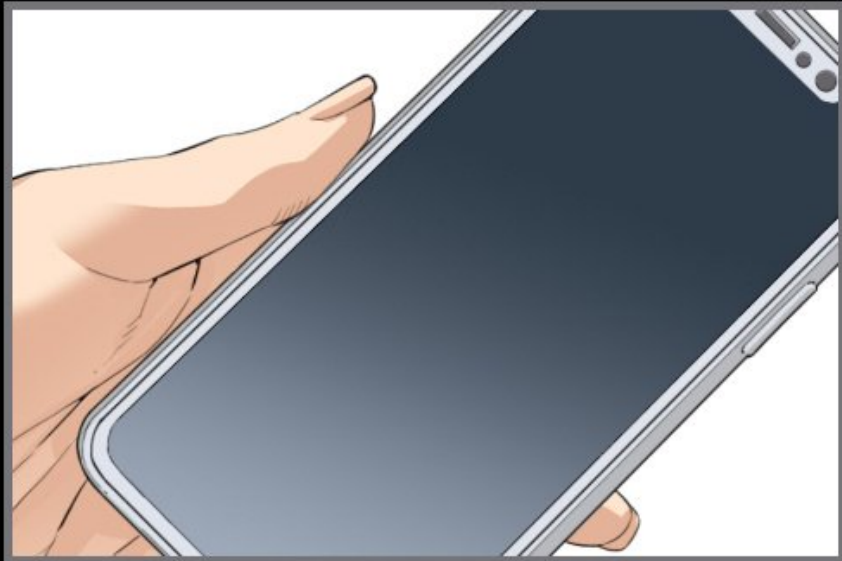






C'EST  
PAS ENCORE  
FINI !









IL NOUS  
RESTE...



LINE  
CHANCE...



JE SAIS QUE  
JE PEUX COMPTER  
SUR ELLE POUR  
LE PLAN B.





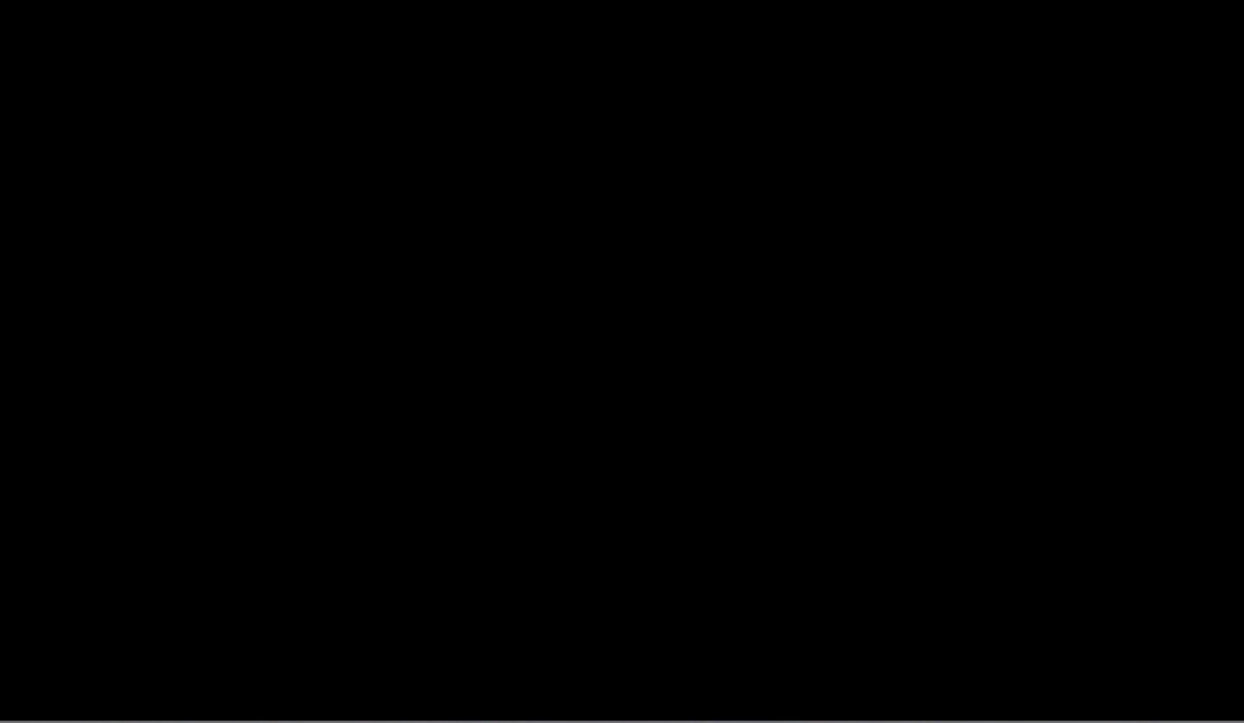


WOUAH,  
HELEN.

QUELLE  
SURPRISE !  
T'ES PAS OCCUPÉE  
À VOLER TOUT MON  
TRAVAIL POUR  
TA PROPRE  
CARRIÈRE ?







LAISSE-MOI  
DEVINER...

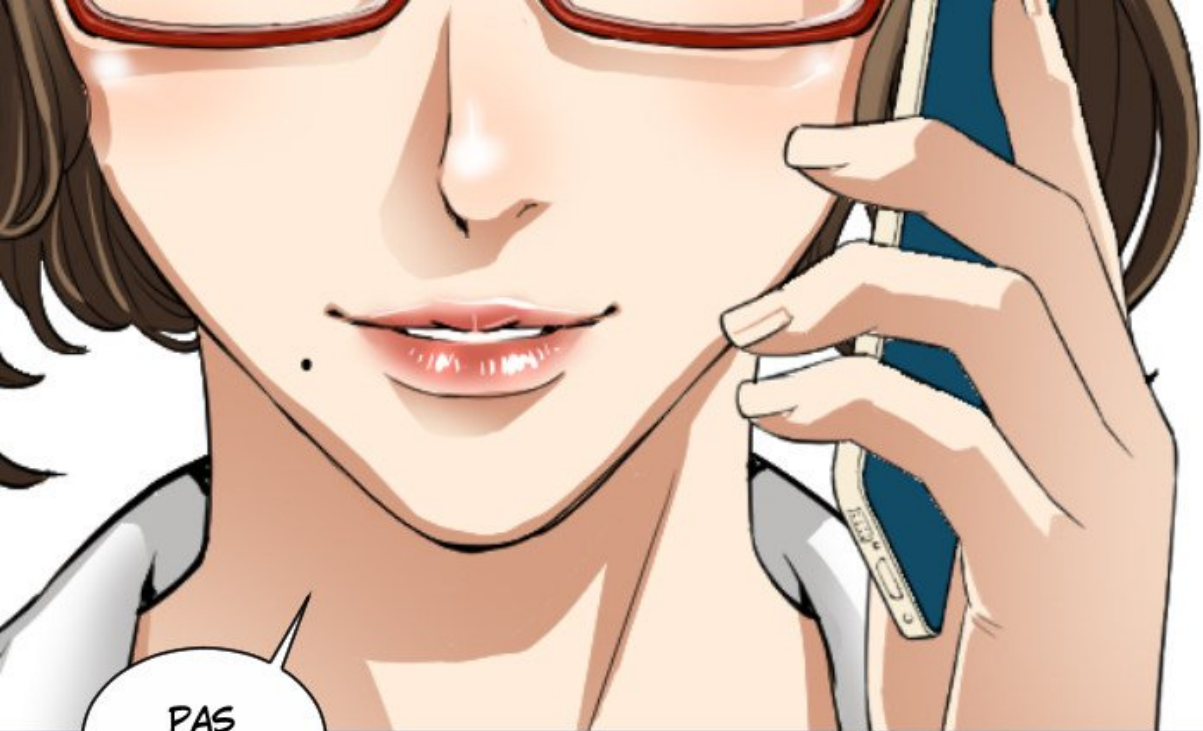




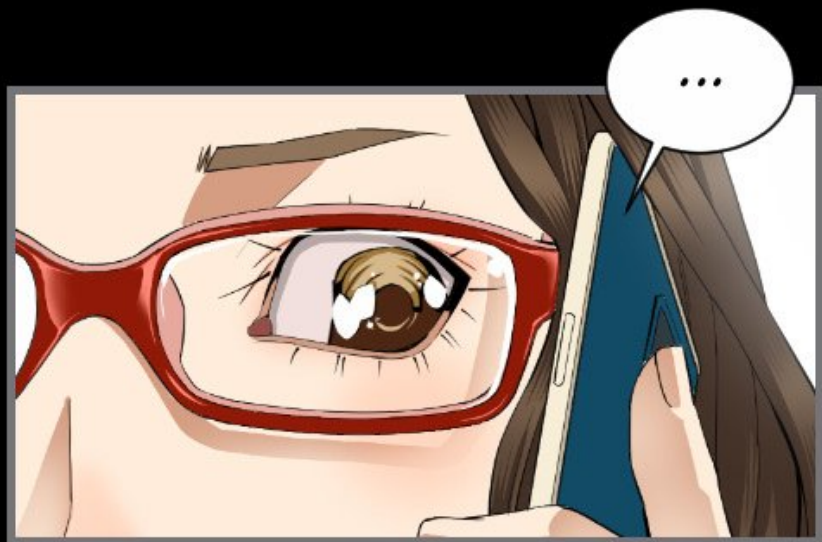




LE COBAYE  
A PERDU DU TEMPS  
À CAUSE D'IRENE  
LEE...



PAS  
VRAI ?



T'AS

RIEN A  
DIRE ?

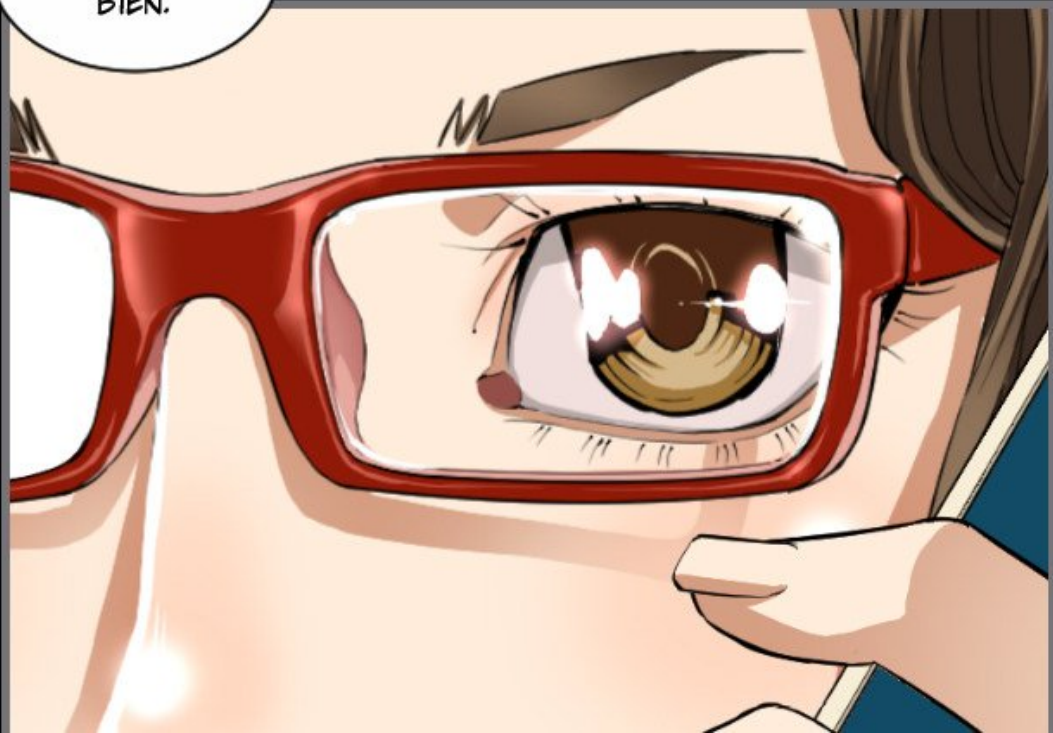
BON, JE  
VAIS T'AIDER,  
MAIS JUSTE  
PARCE QUE  
JE ME SENS  
MAL POUR  
TOI.



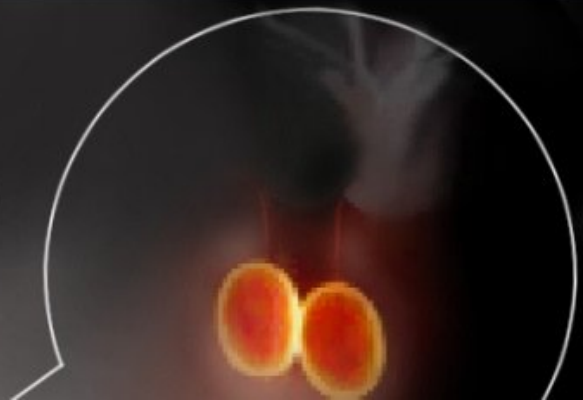


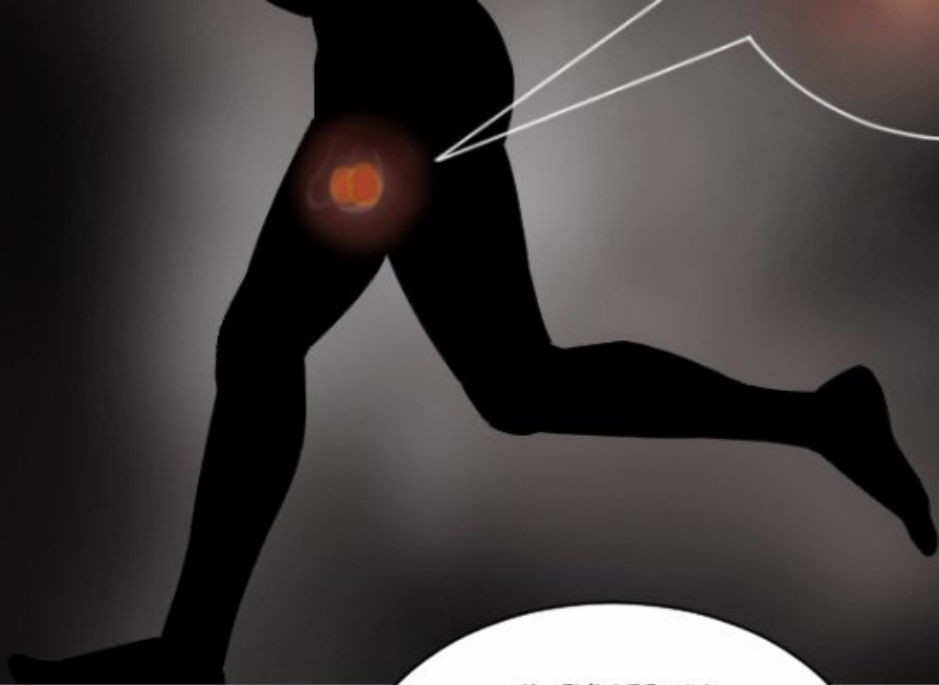


ÉCOUTE-MOI  
BIEN.

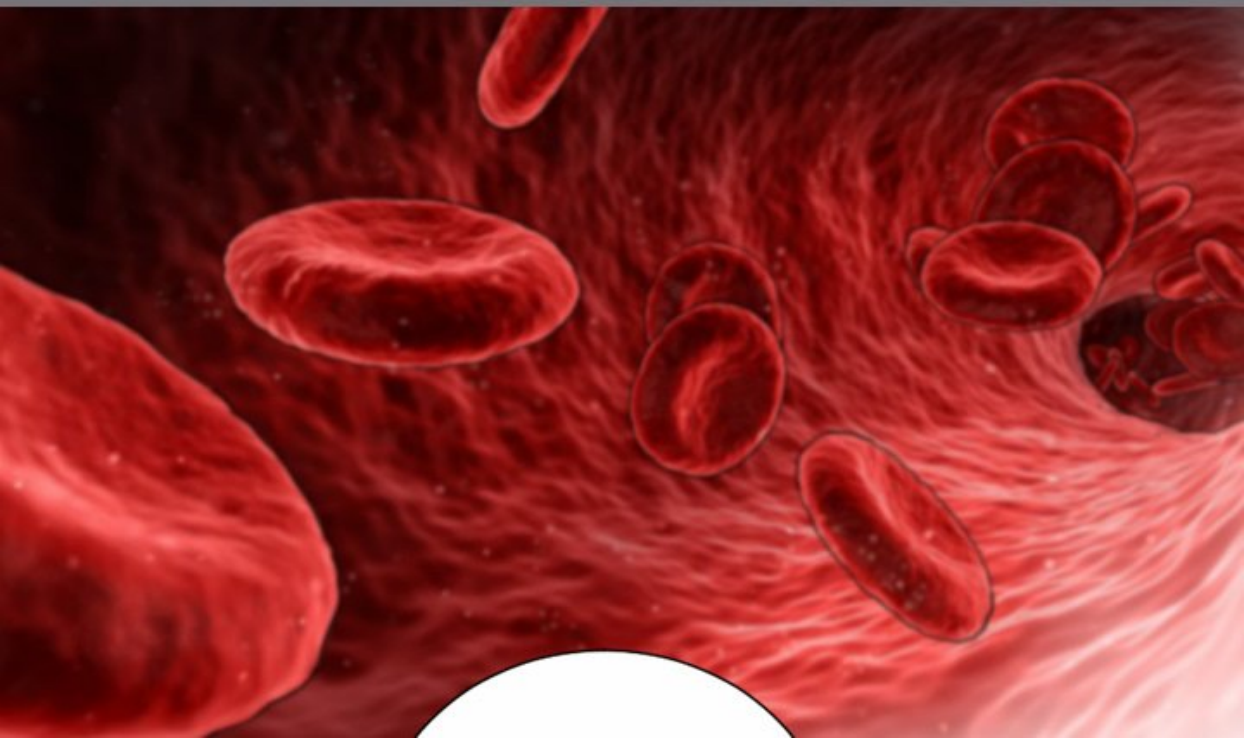








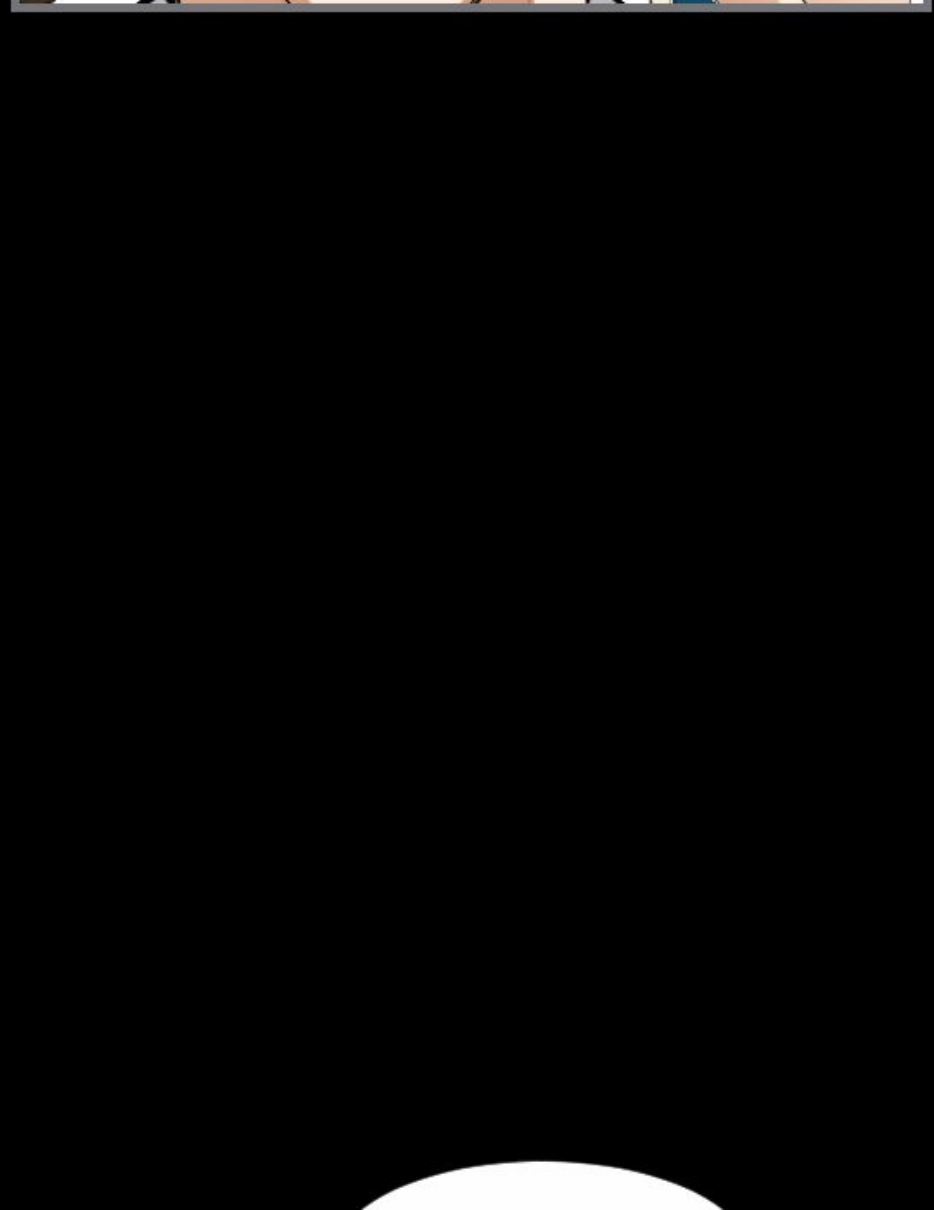
IL EXISTE UN  
EFFET SECONDAIRE  
QUI S'ACTIVE QUAND LE  
COBAYE EST SOUMIS À  
UN EFFORT PHYSIQUE  
INTENSE.



CELA ACCÉLÈRE  
LA CIRCULATION  
DANS LES GLANDS  
TESTICULAIRES, ET  
PROLONGE L'EFFET  
DU SÉRUM.



IL TE  
RESTE UNE  
HEURE.



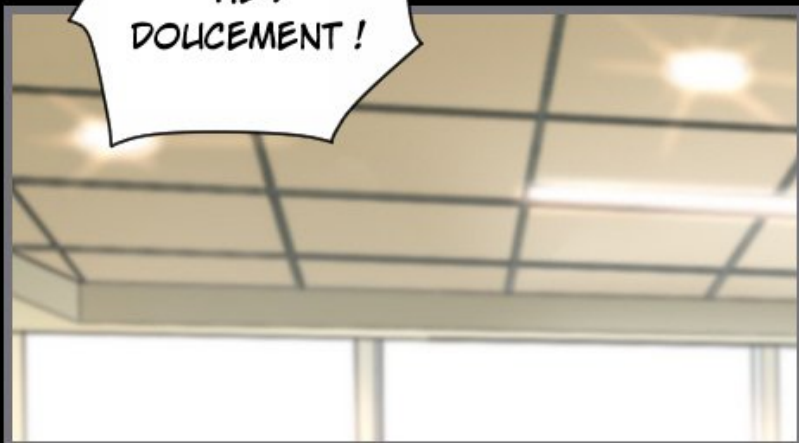


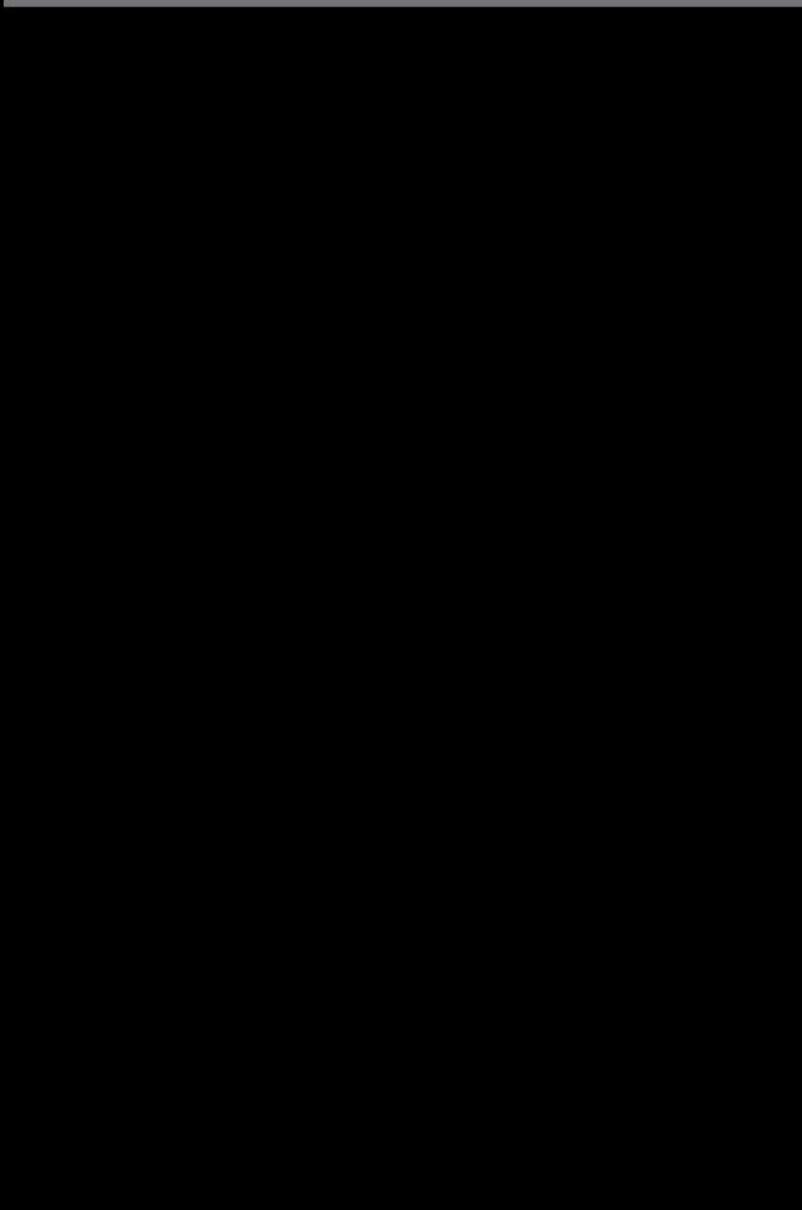
**BIP. BIP.  
BIP...**

NEW 2



HÉ !  
DOLCEMENT !







CHANGEMENT DE  
PROGRAMME.

ON DOIT  
TROUVER OÙ SE  
TROUVE IRENE  
LEE.



ET VOUS,  
M. KANG...







COMMENCEZ  
À COURIR.



QU'EST-CE  
QUE VOUS  
DITES ?!



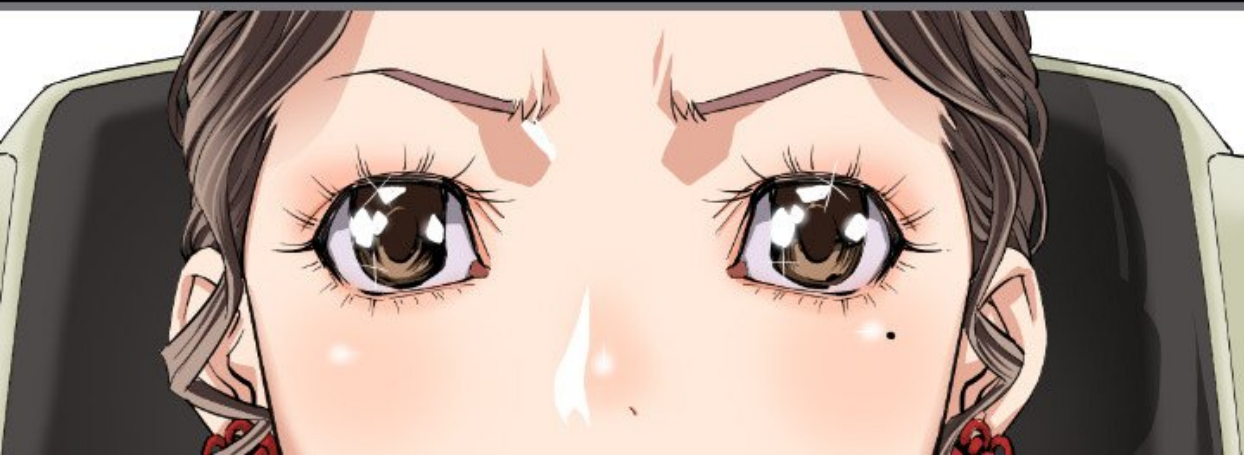
















SI JE PEUX  
PAS LES BATTRE,  
JE VAIS DEVOIR  
RUINER LEURS  
PLANS !

À SUIVRE...

 **TOOMICS**.COM