

A decorative graphic featuring a thick pink arch on the left and a thick orange circle on the right, both with a slight glow. The word "Seconde" is written in a stylized, rounded font across the bottom of the arch.

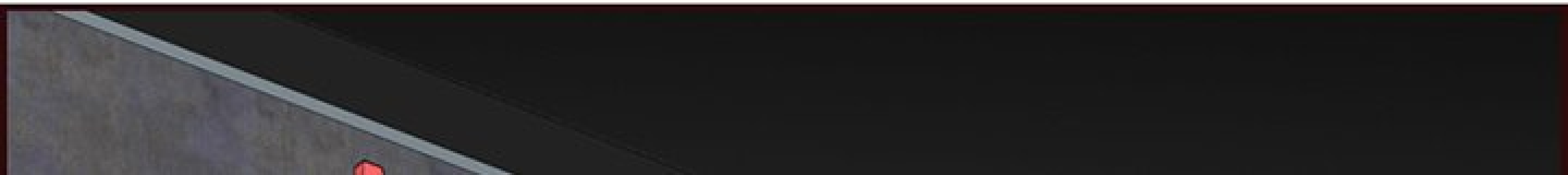
Seconde

Jeunesse

Scénario : Mchalo

Dessin : Seopade

- Épisode 117 -



MOTEL

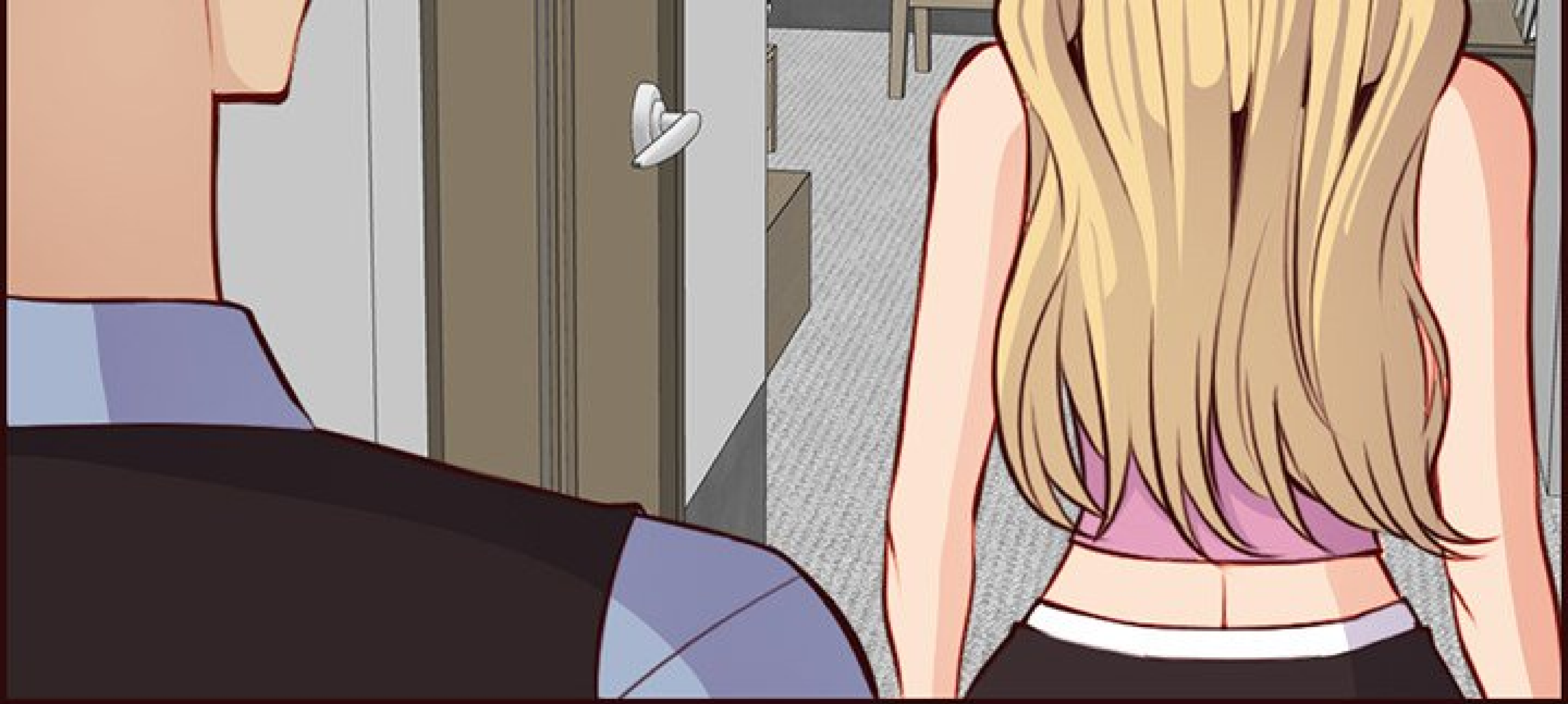
Imperial



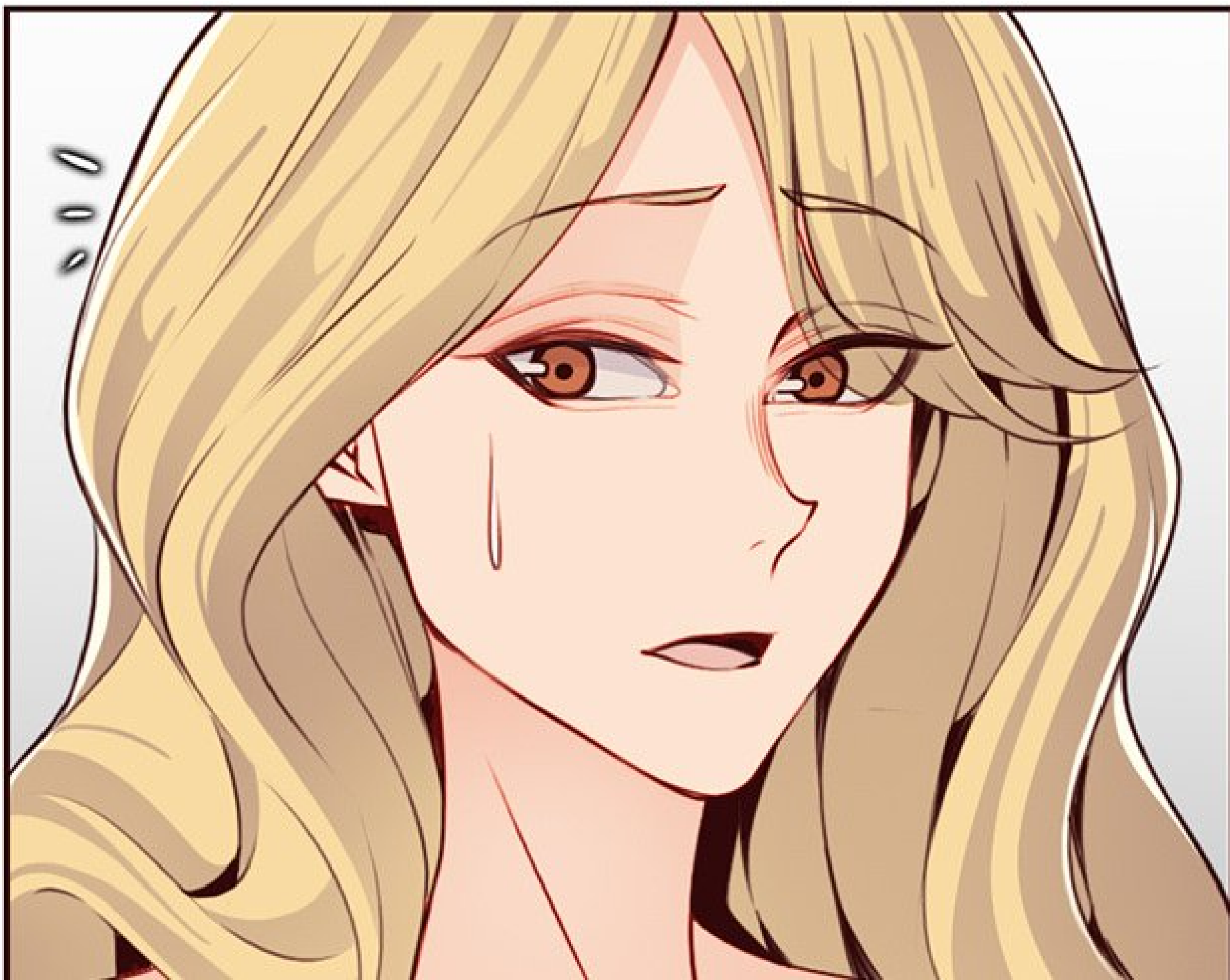






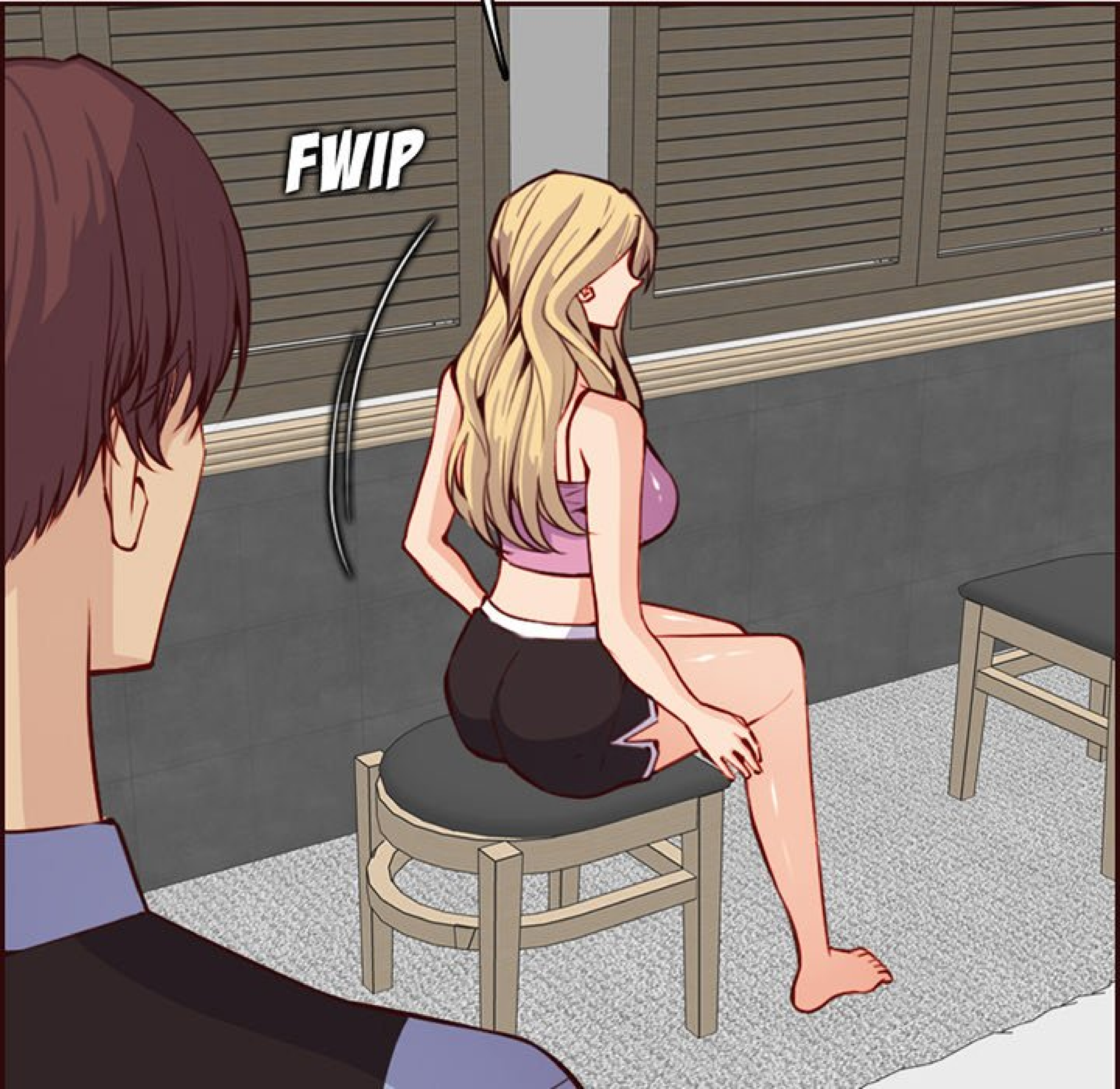


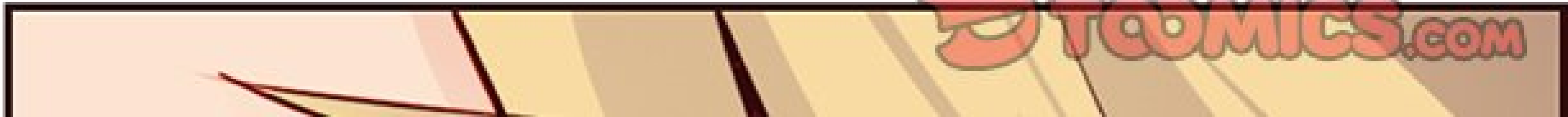
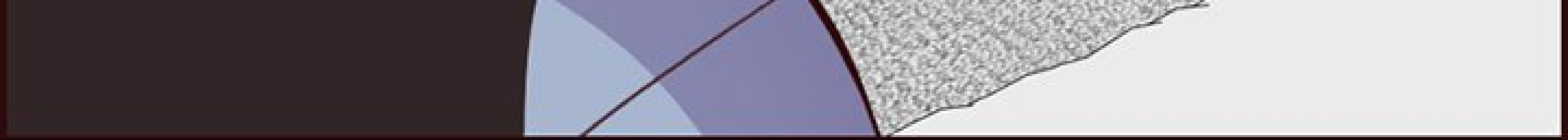
ASSEYEZ-VOUS
LÀ-BAS.

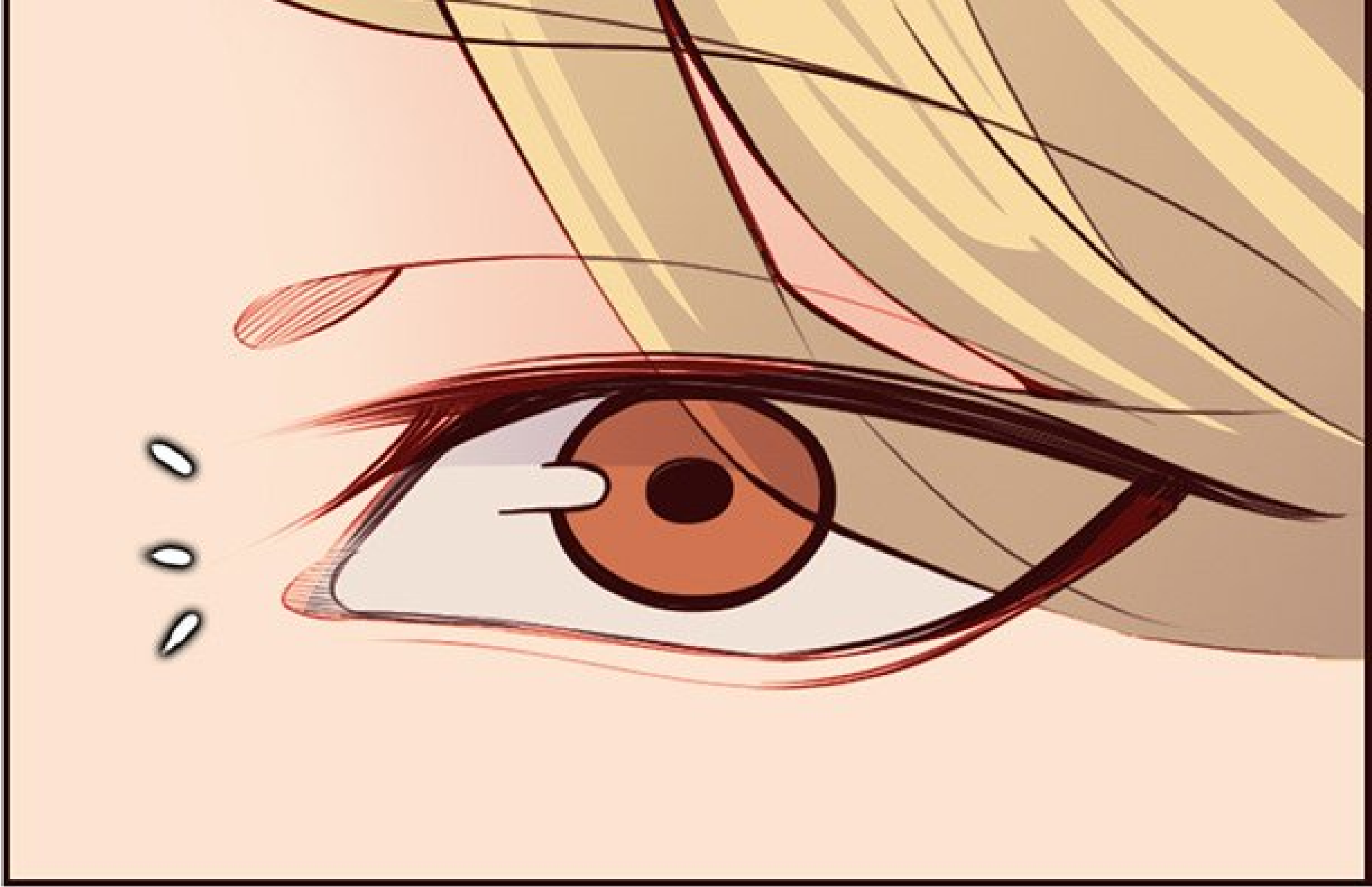




FWIP







?

ET...





COMMENÇONS.





HEIN ?

COMMENCER
QUOI...?





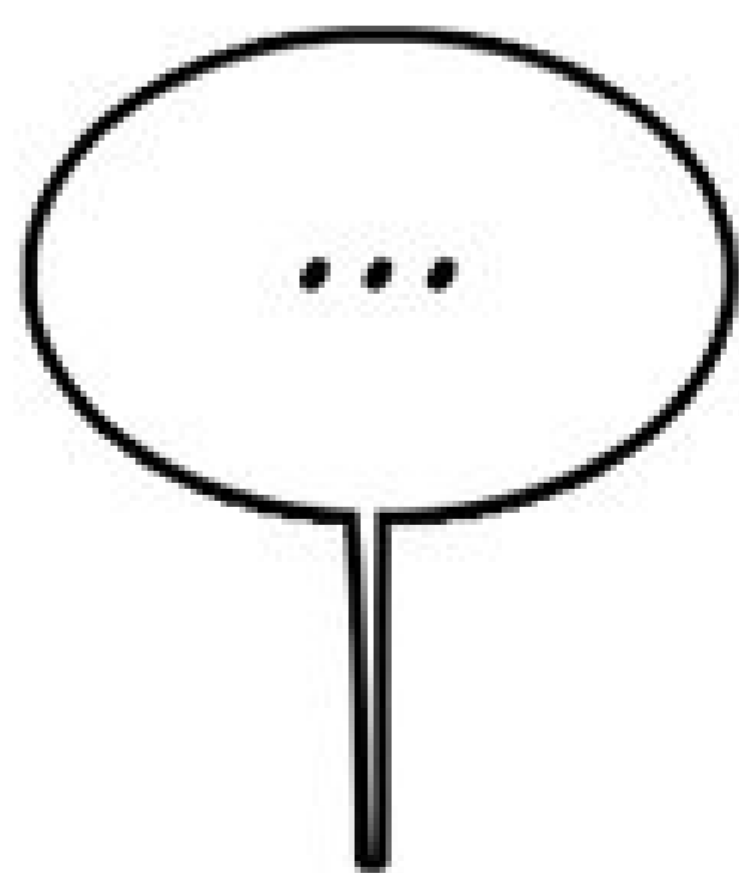
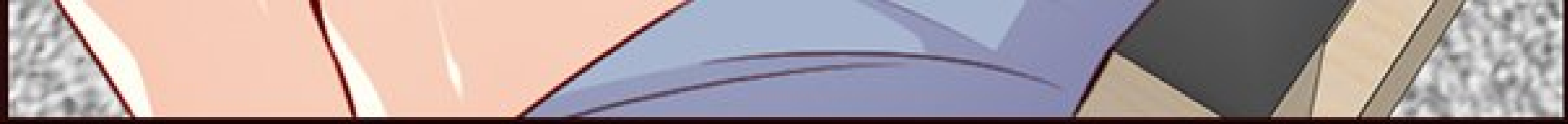
ALLEZ. NE FAITES
PAS COMME SI VOUS
NE SAVIEZ PAS.

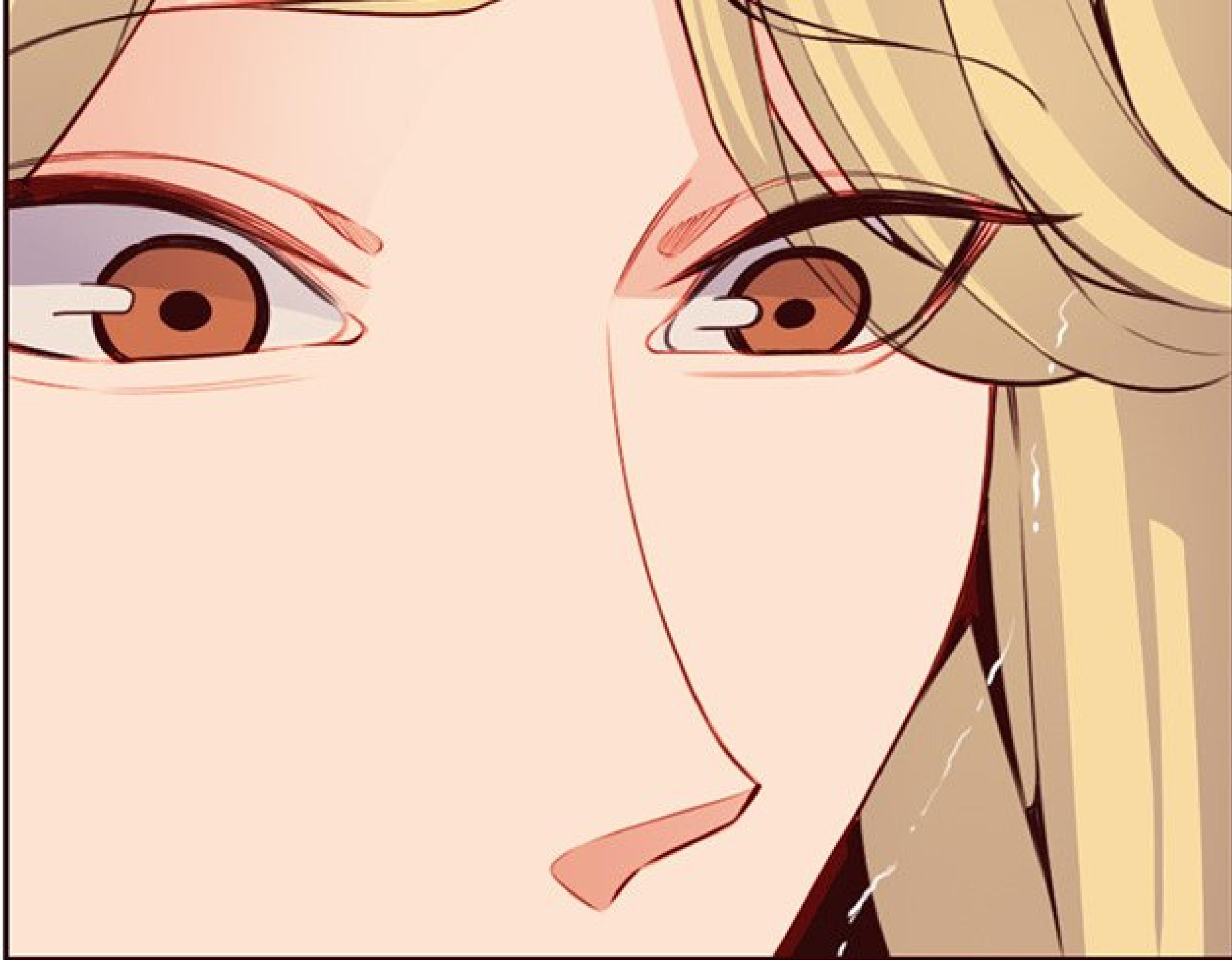


PLOP



FRR





FWIP





PLOP





FWIIP



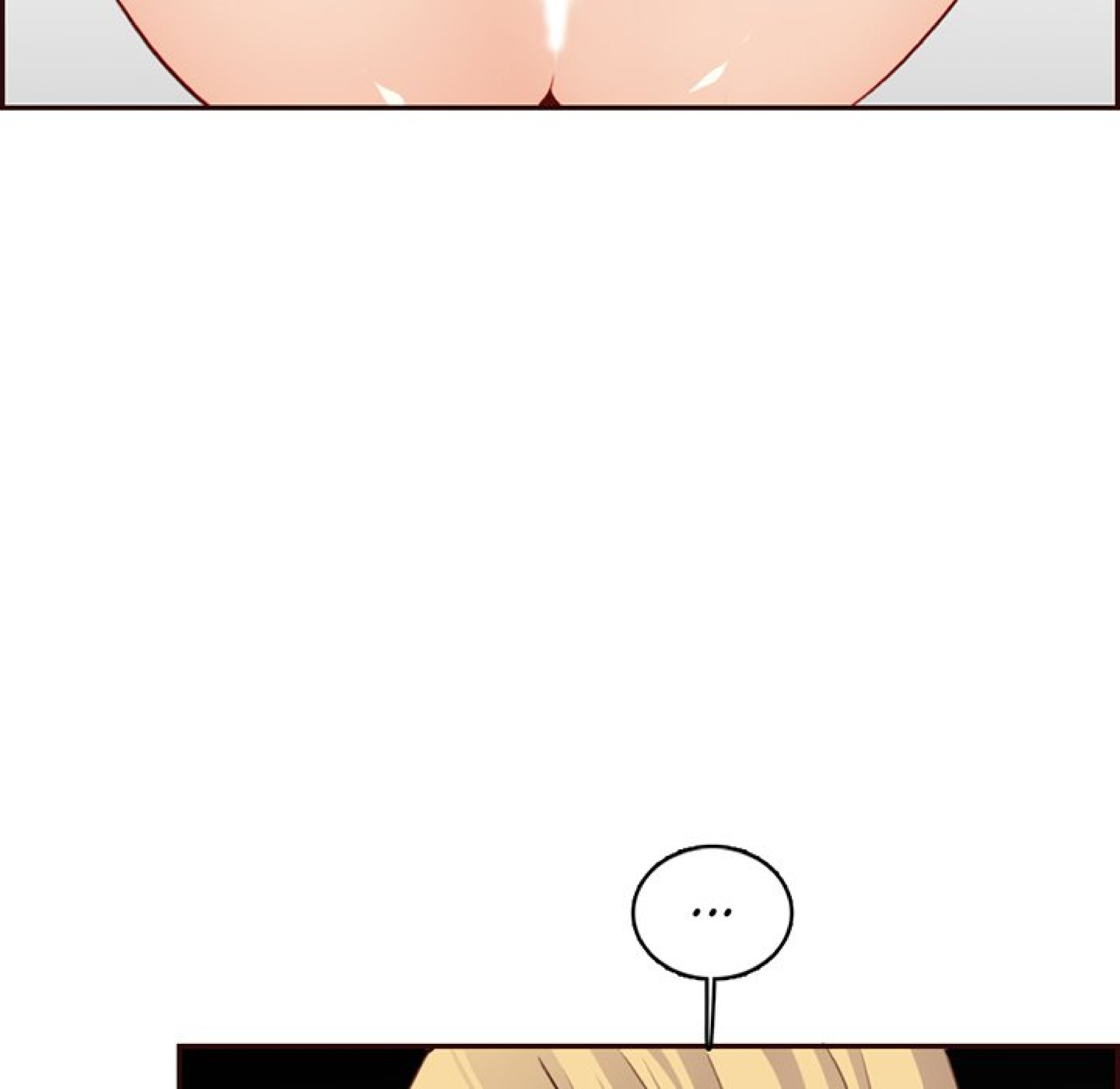
OLAH...





ELLE EST AUSSI
BELLE QUE CE QUE
JE PENSAIS.



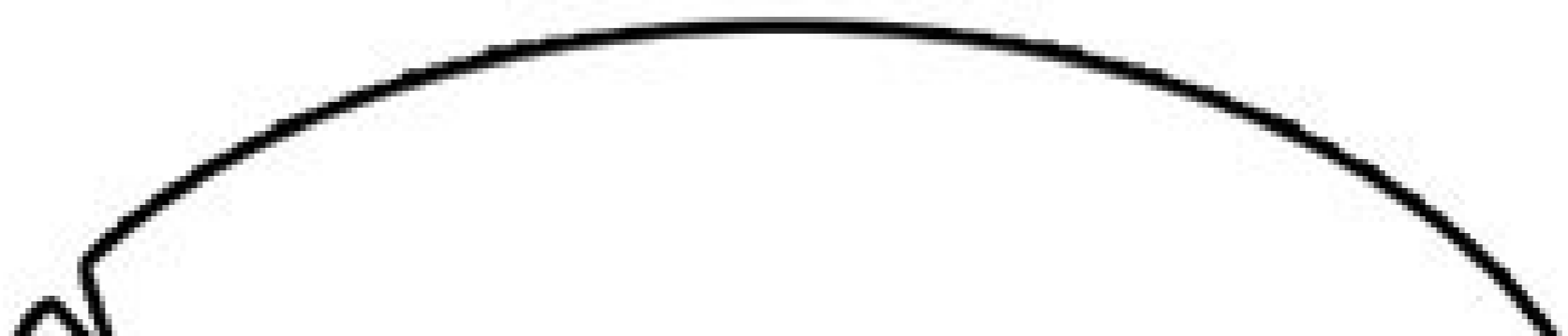
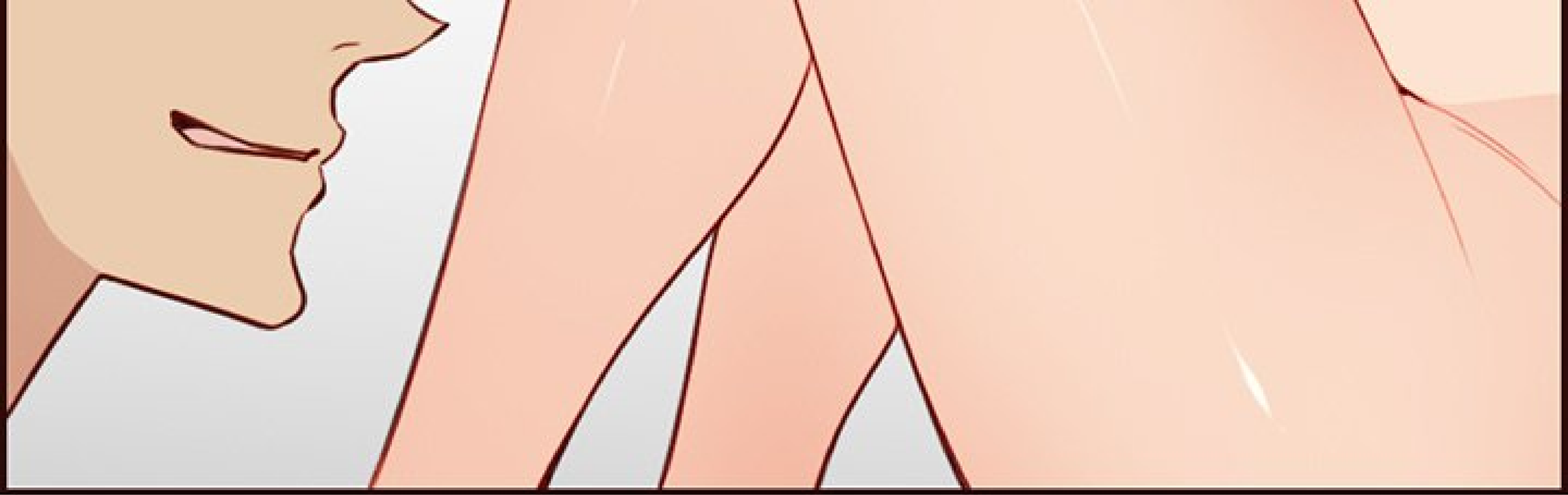




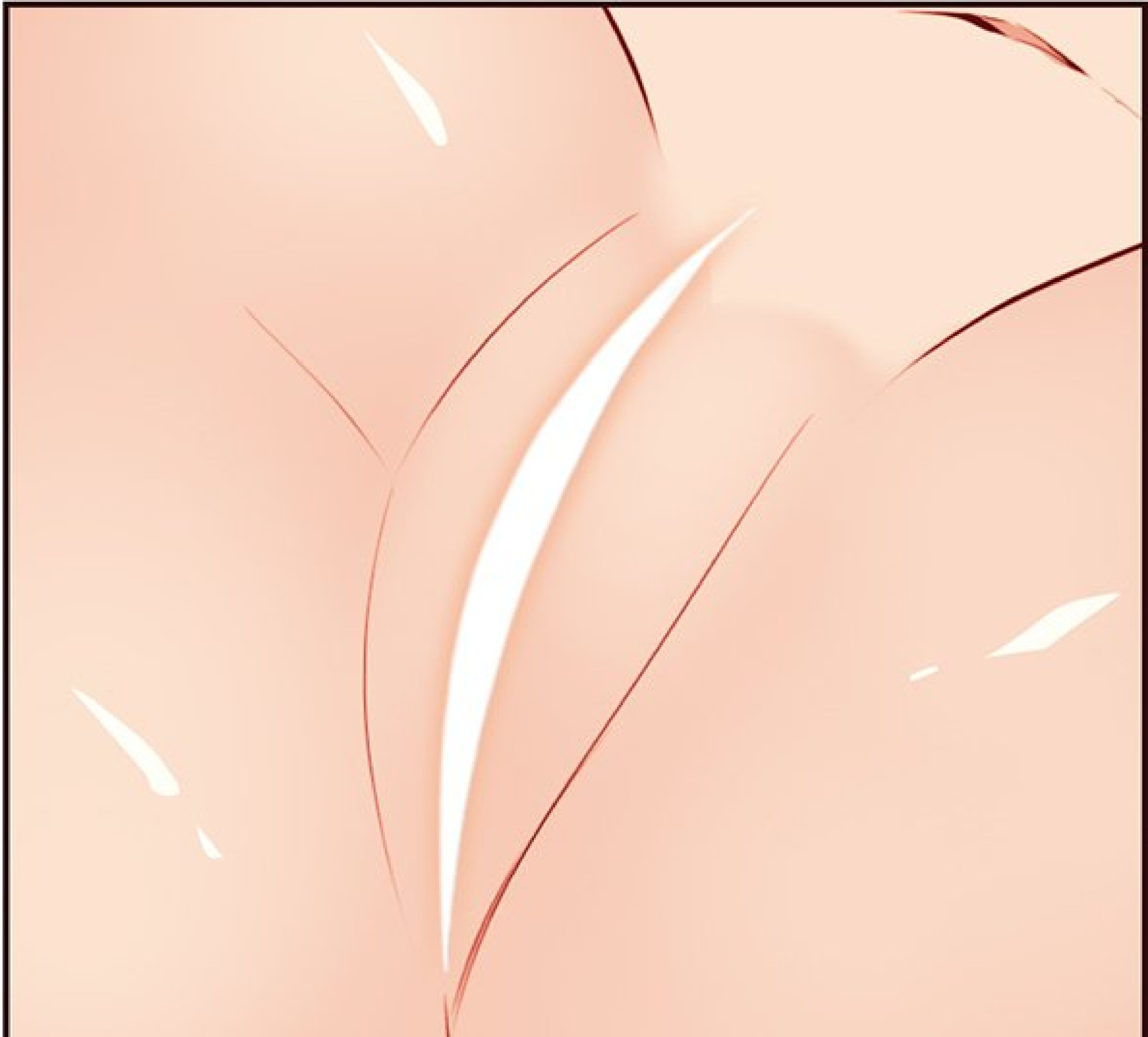
MAIS...



VOUS ÊTES
TOUJOURS AUSSI
PEU POILLE ?



OU VOUS VOUS
FAITES ÉPILER ?



A comic book panel with a white background. At the top, there is a horizontal strip of light orange color with a dark red outline. In the lower-left quadrant, there is a large, hand-drawn speech bubble with a black outline. Inside the bubble, the text "RÉPONDEZ À MA QUESTION, SOPHIE." is written in a simple, black, sans-serif font. In the lower-right corner, the top of a character's head is visible, drawn with simple black lines. The character has dark hair and is wearing a white garment with a dark collar.

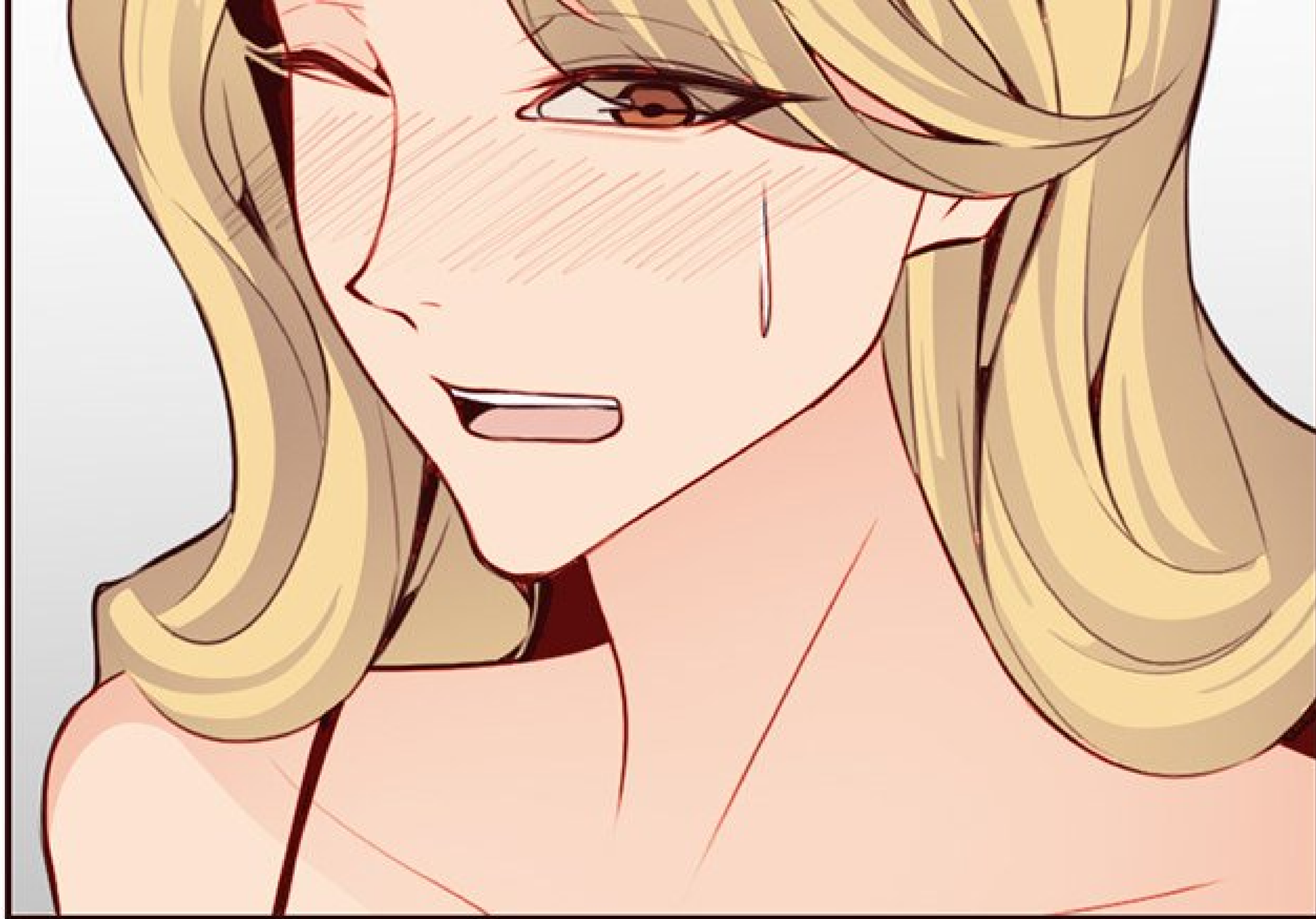
RÉPONDEZ À MA
QUESTION, SOPHIE.



CE N'EST PLUS
MOI, L'ESCLAVE,
DÉSORMAIS.

J-JE M'ÉPILE.





JE VOIS...
JOLIE.



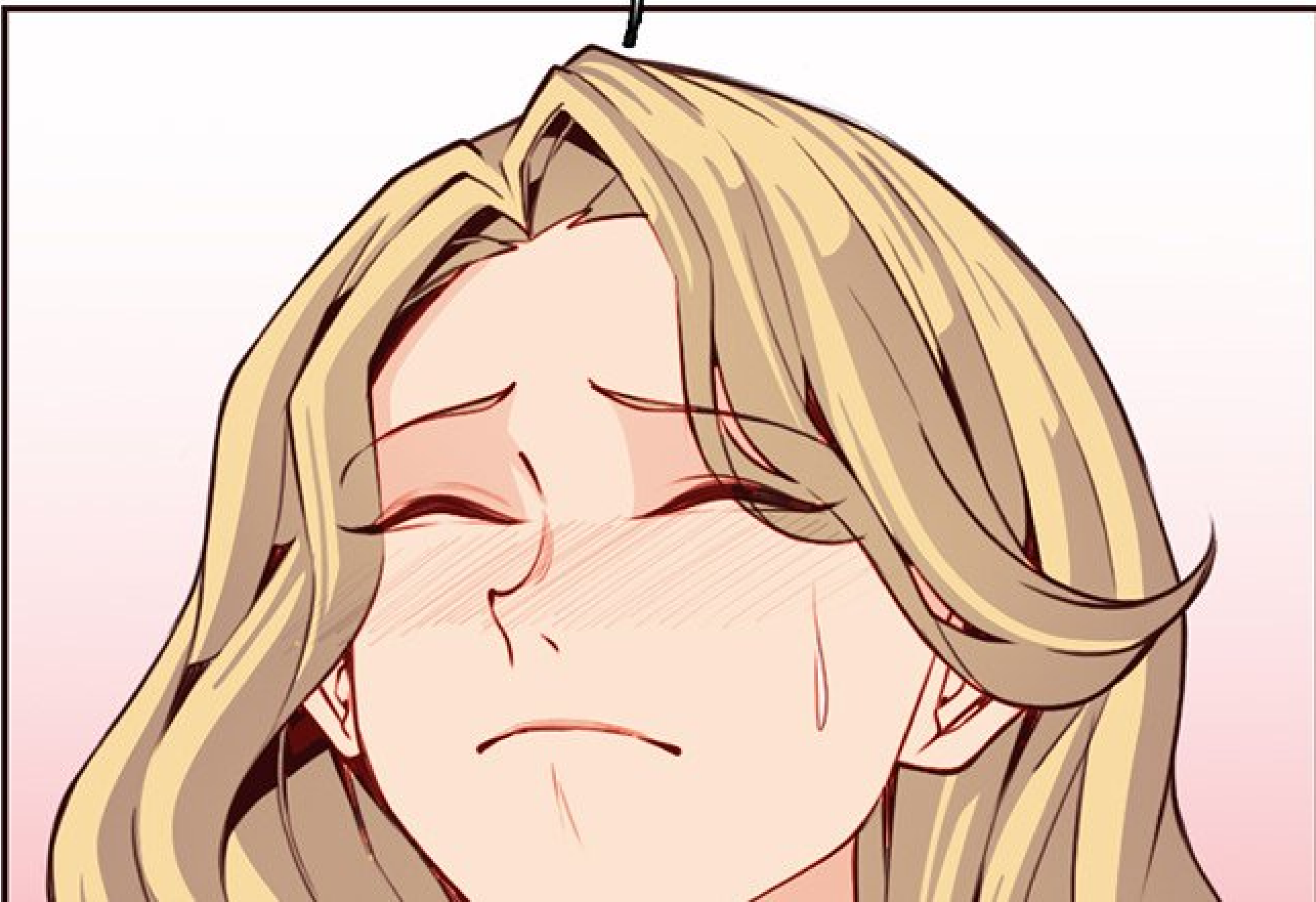


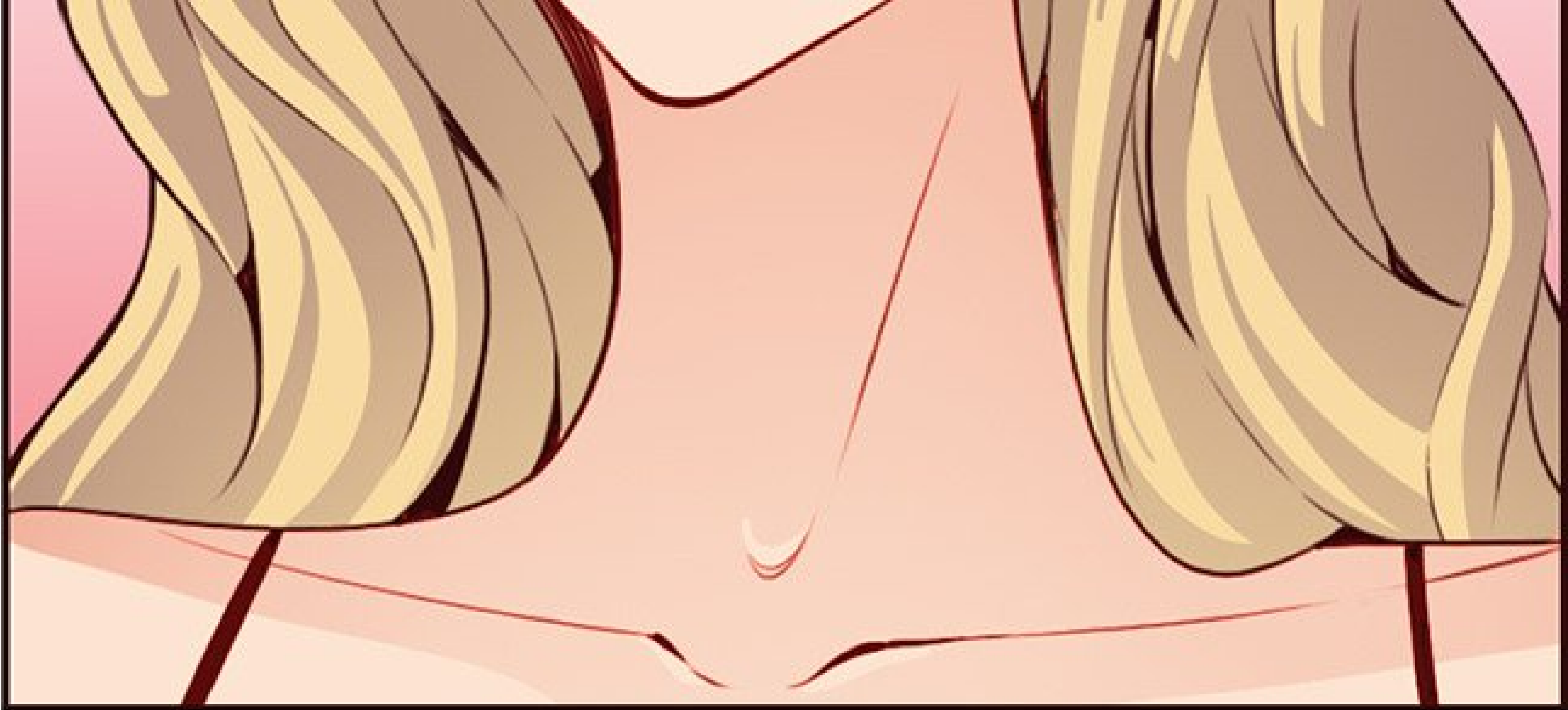
FRSH

FRSH



HAGN...



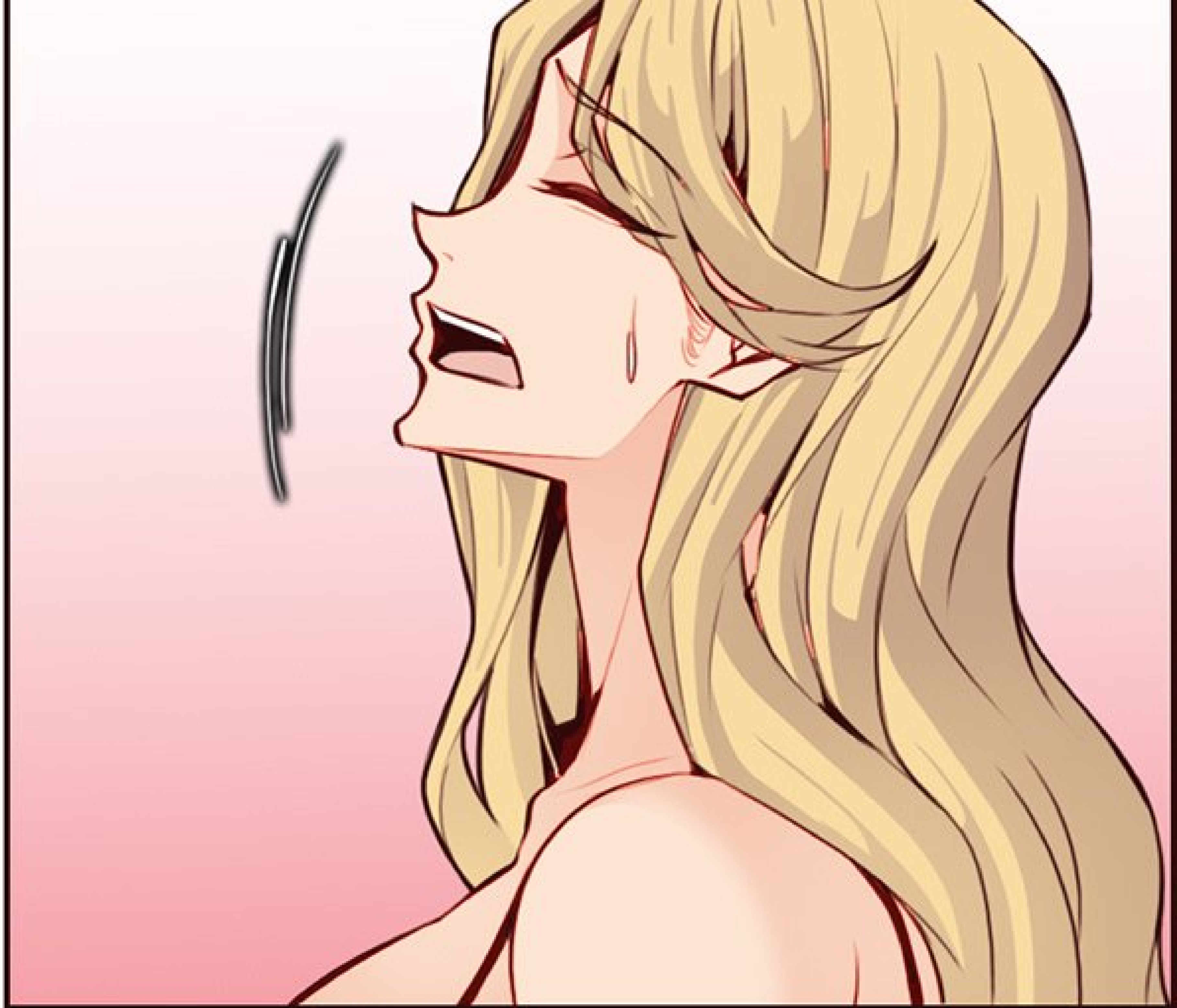


CHOP





HAN...



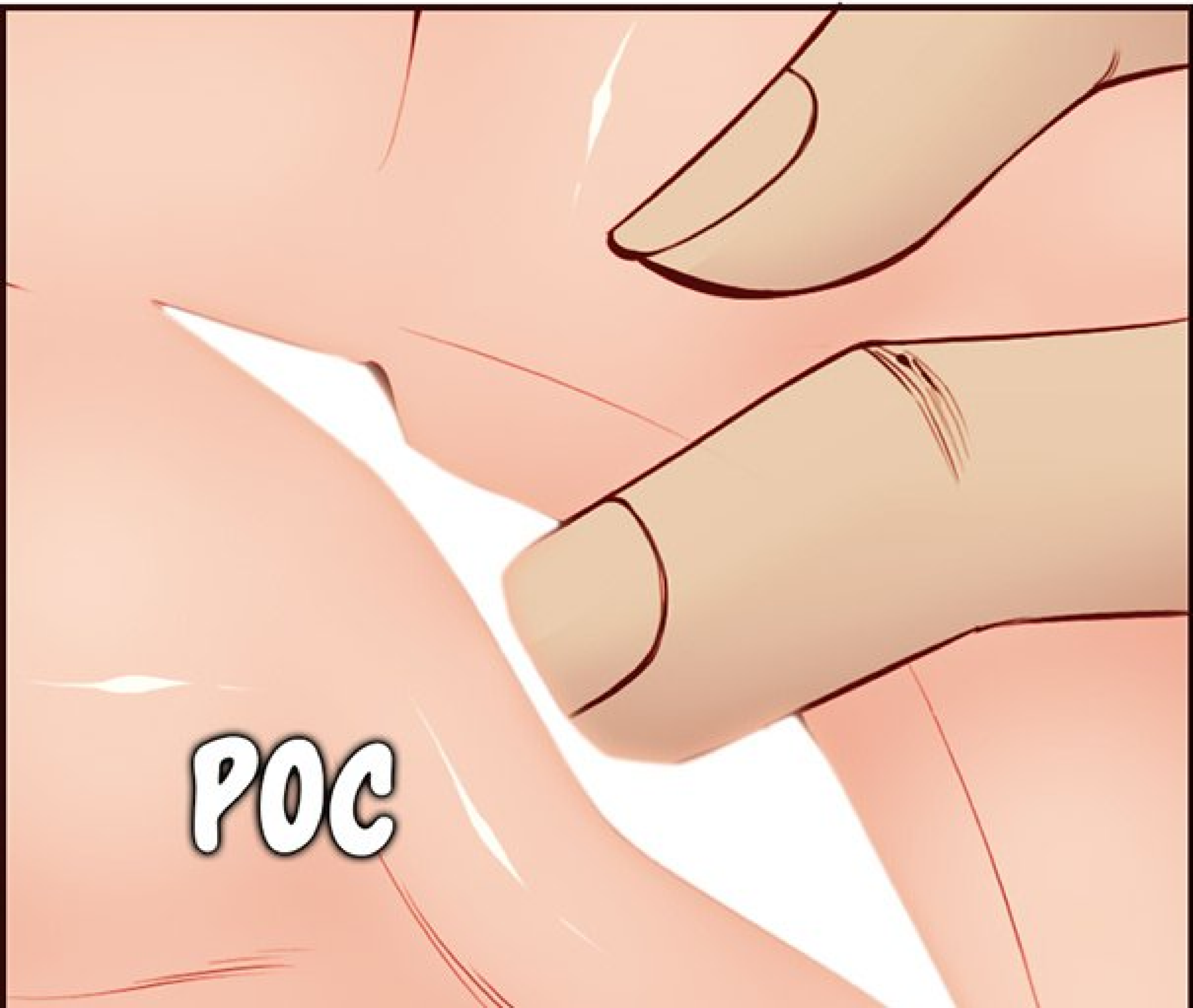
BIEN. JE VOIS
CES RÉACTIONS.











POC



HAGN...!



SPLISH

A hand is shown tearing through a translucent, reddish-brown surface. The hand is positioned in the lower center, with fingers curled as if pulling or tearing. The surface is cracked and jagged around the hand, with bright white highlights indicating the point of contact and the direction of the tear. The background is a solid light brown color.

SPLISH



SPLISH

HAN... HAGN !



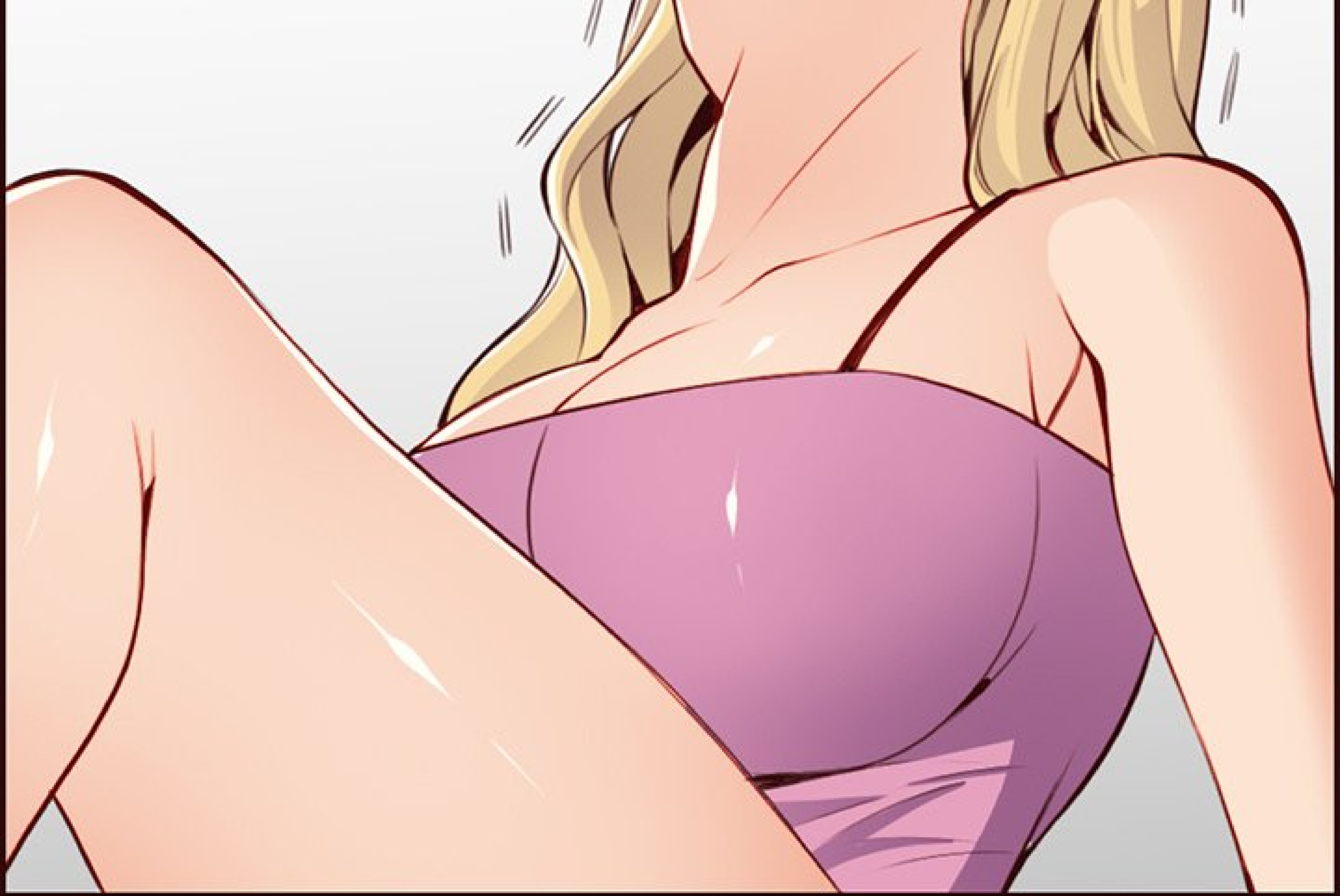
SPLISH

SPLISH

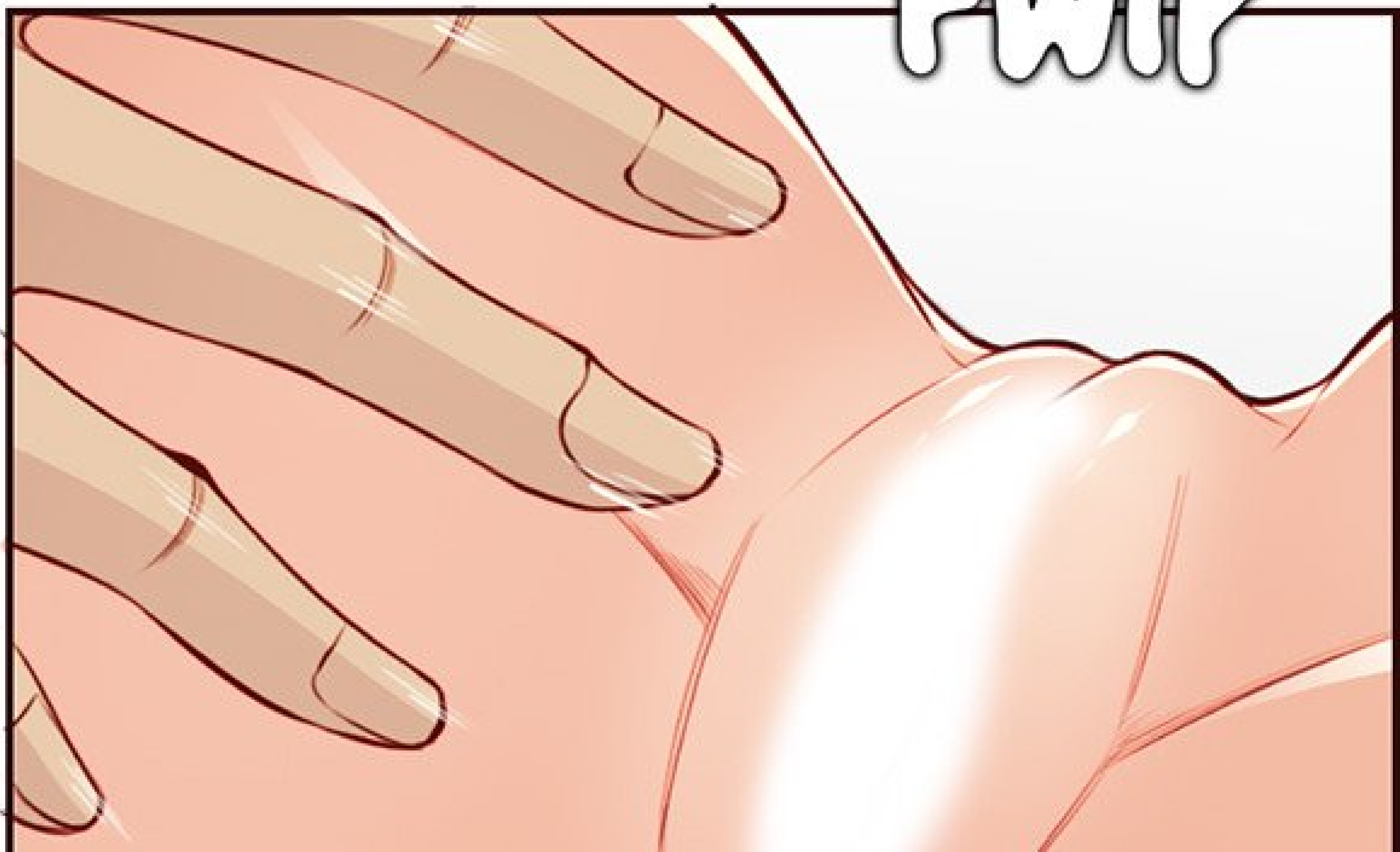
SPLISH

HAGN...





FWIP



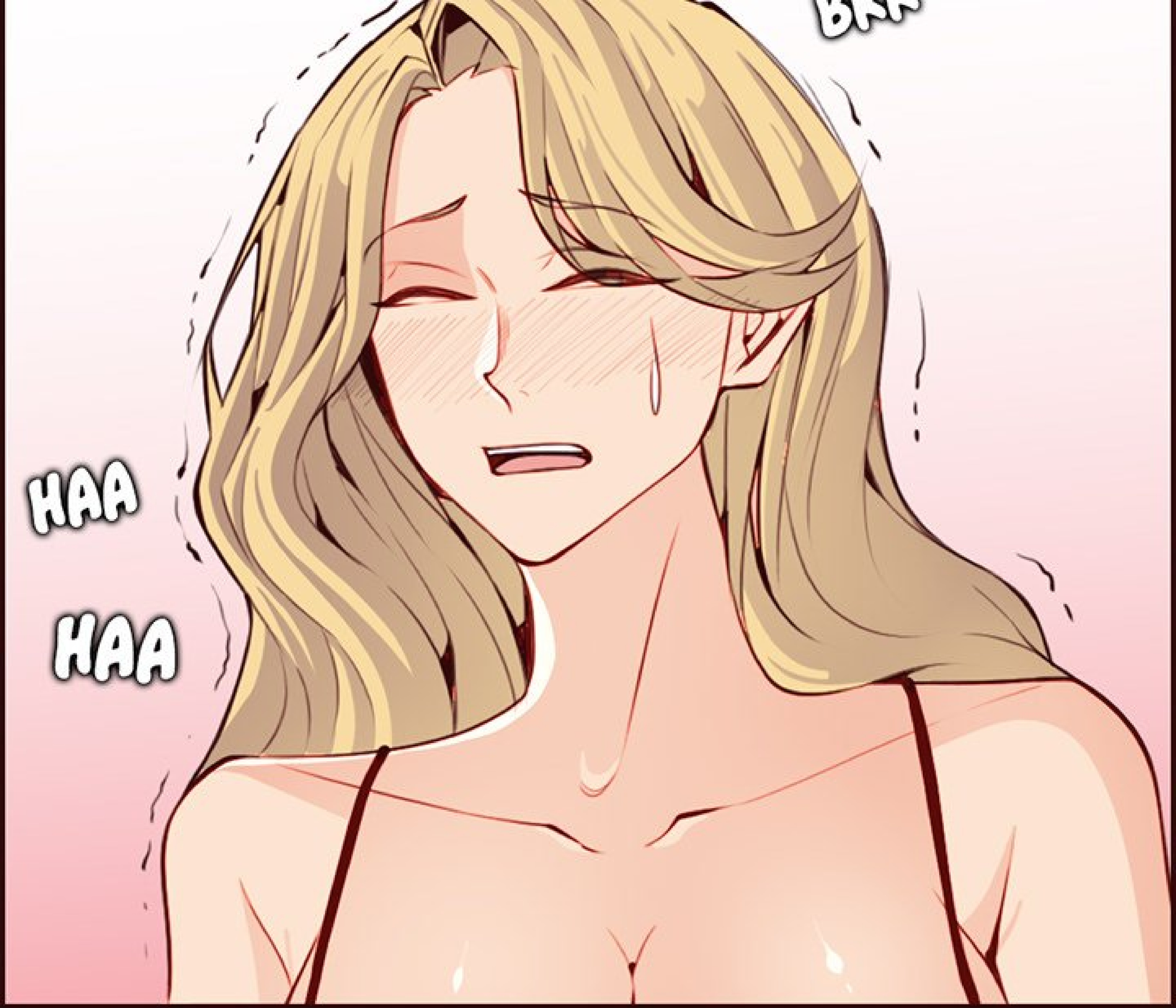


HAA

BRR



BRR



HAA

HAA

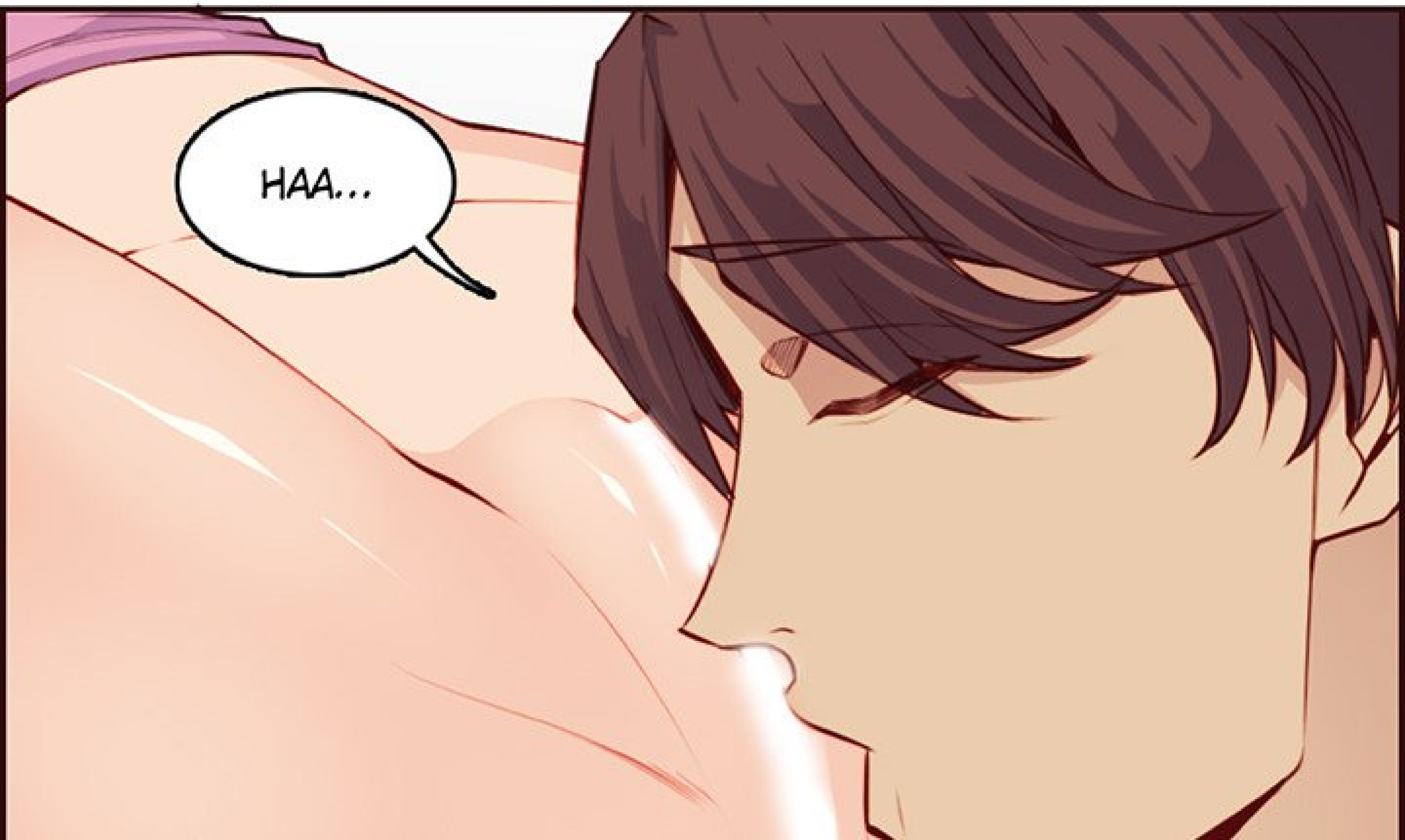
BRA

CRCR... ELLE
EST DÉJÀ SOUS
MON EMPRISE.





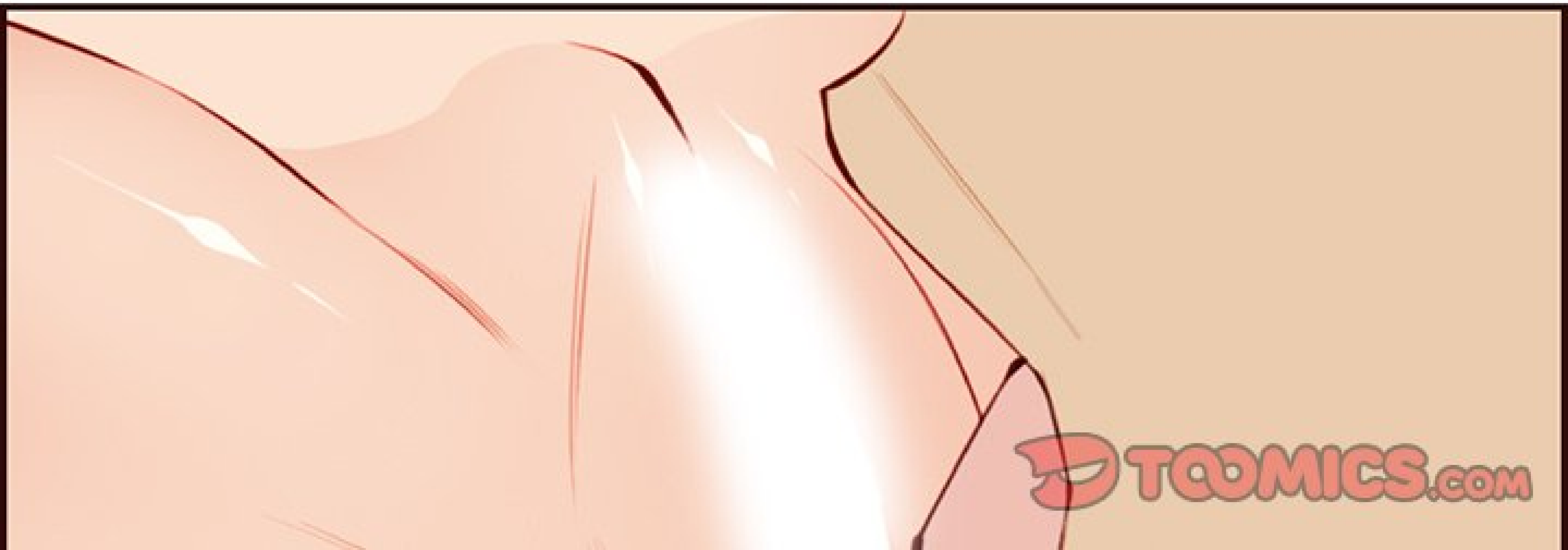
JE LA SUCE ?



HAA...







SLURP



HAN... HAGN...

SLURP

HAN...



SLURP

SLURP





SLURP

SLURP

HAN... HAA...

SLURP

SLURP

A-ARRÊTEZ.



SLURP





AÏE...
MA TÊTE...



///

TAP

TAP COMICS.COM

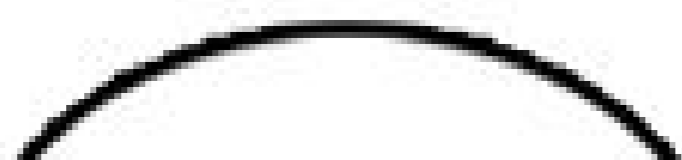


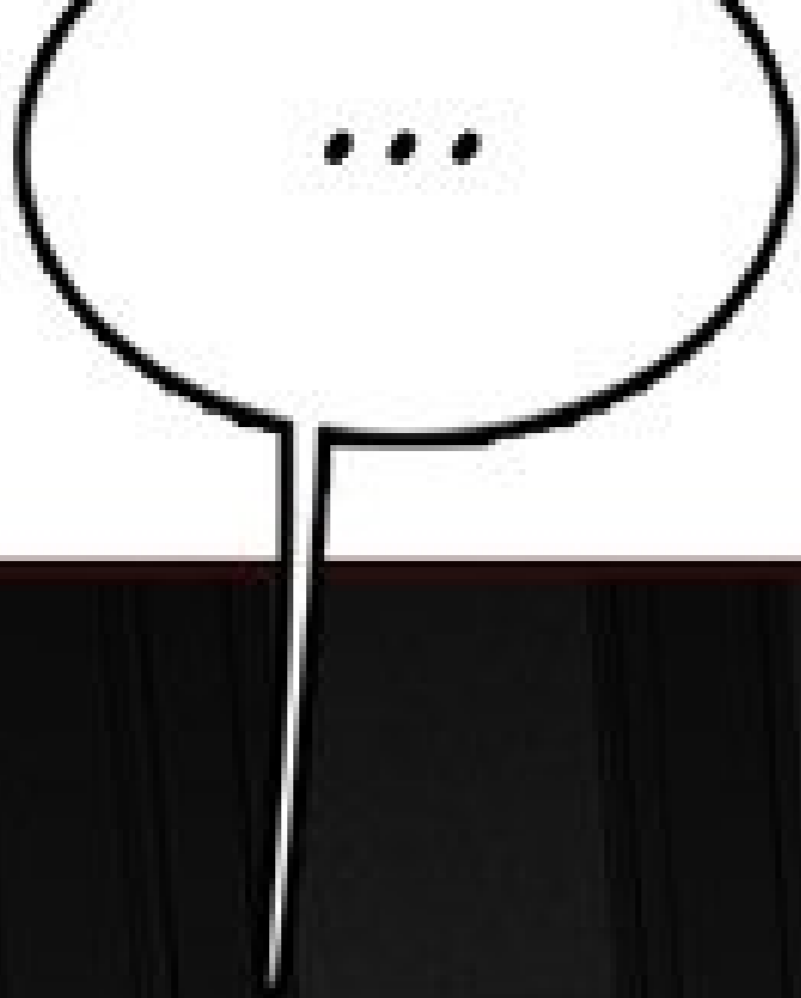
GLOW
GLOW













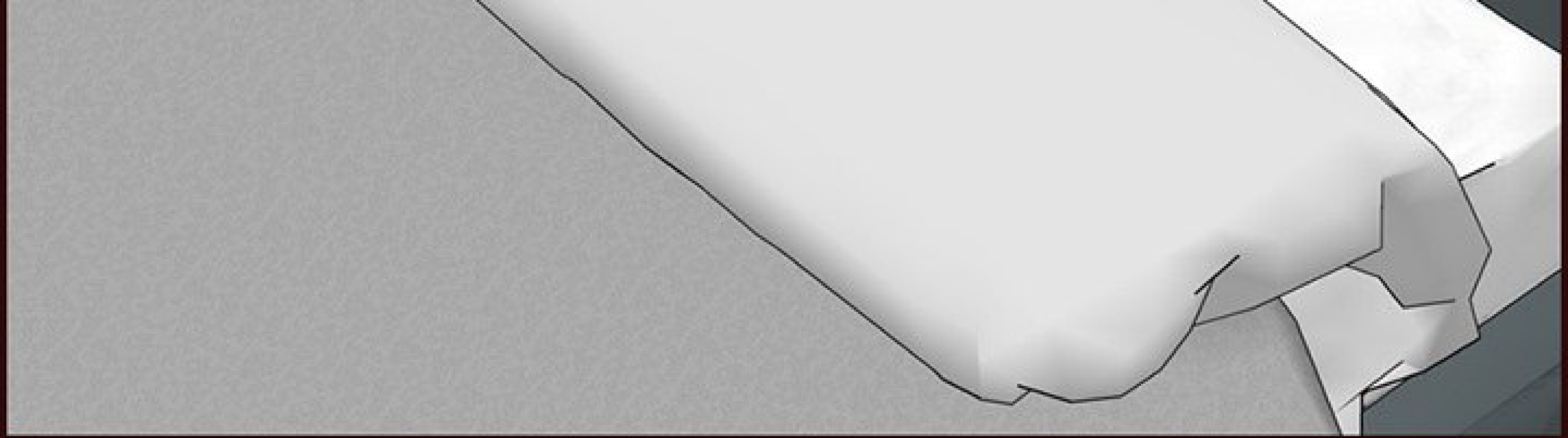
The image features a dark, monochromatic illustration of a room's corner. The walls and floor are rendered in various shades of dark gray and black, with sharp lines and perspective suggesting a three-dimensional space. The lighting is dramatic, creating strong highlights and deep shadows. In the center-right of the image, the word "CRIC" is written in a bold, white, italicized, sans-serif font with a slight drop shadow, making it stand out against the dark background.

CRIC









ENCORE PARTIE ?!
QUAND ?!





PLOP





ON COMMENCE,
SOPHIE ?







À SUIVRE...

