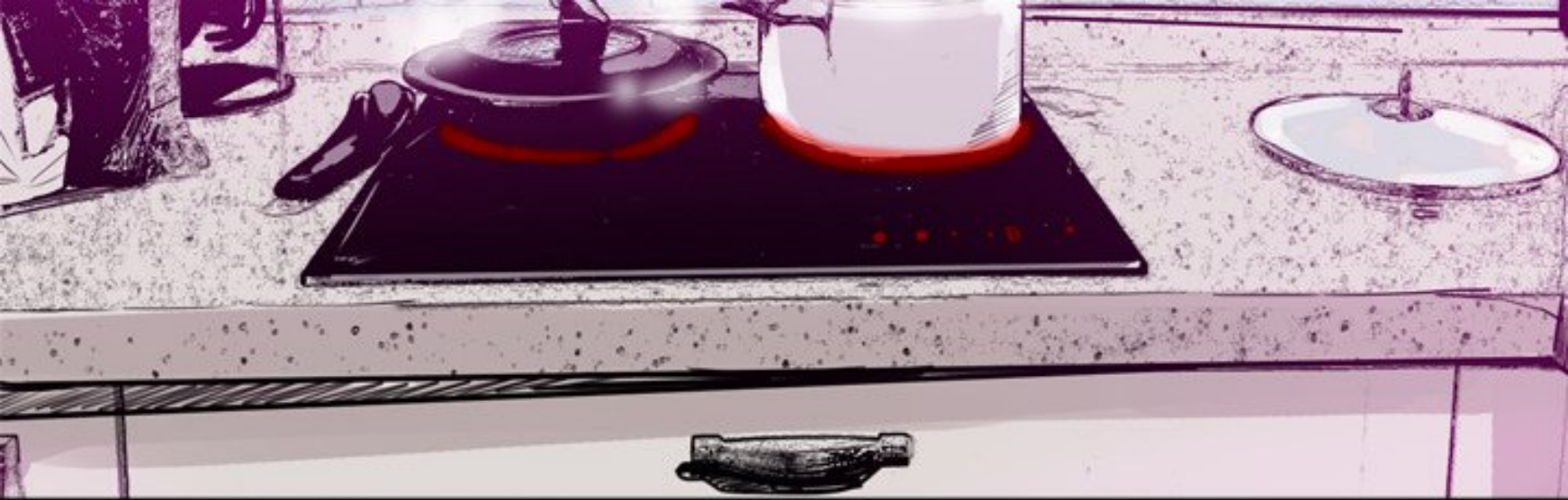


A kitchen scene with a brick wall. A stove is visible on the left, with a pot of boiling water on it. The word "BLOUP" is written in large, bold, white letters with a black outline, slanted upwards. The word "BLOUP" is also written in smaller, bold, white letters with a black outline, slanted upwards, near the pot. The background is a brick wall with a dark horizontal band across the middle. The top of the image is white.

**BLOUP**

**BLOUP**

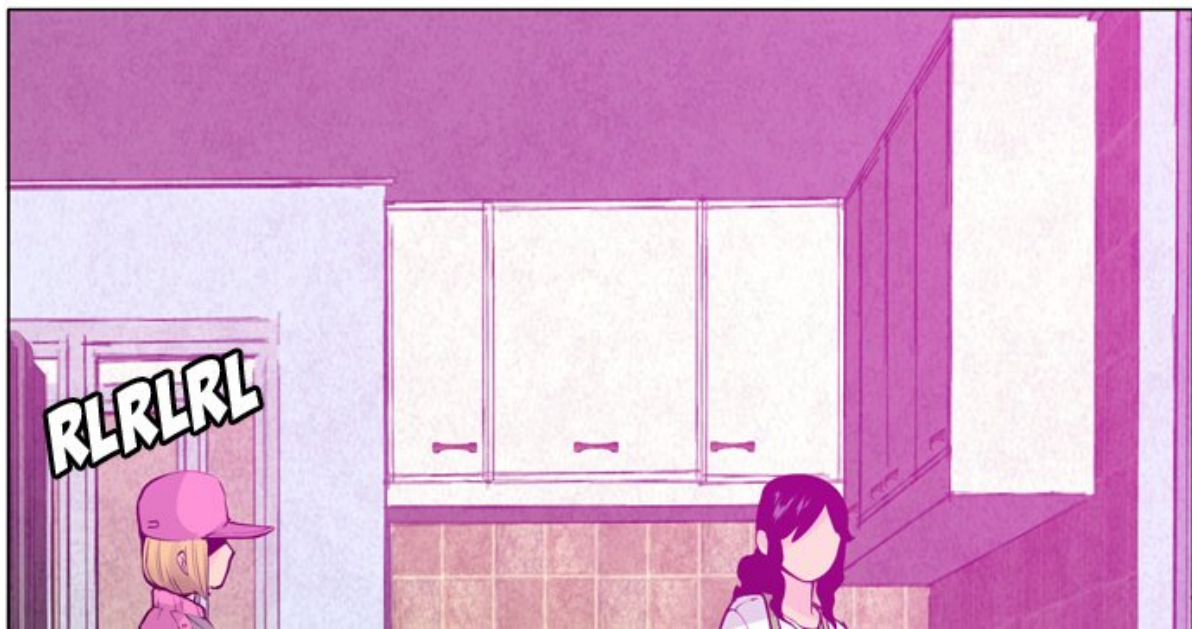




**BLOUP**



**BLOUP**






**TAP**









J'Y VAIS, MAMAN.



SOPHIE,  
MANGE AVANT  
DE PARTIR.



JE T'AMÈNERAI  
À L'AÉROPORT, TU AS  
ENCORE LE TEMPS.



C'EST  
BON.

JE VEUX Y ALLER  
TOUTE SELLE.





MAIS SOPHIE,  
J'AI FAIT TON PLAT  
PRÉFÉRÉ !

JE N'EN  
VEUX PAS.

A woman with blonde hair, wearing a grey hoodie and a pink visor, is shown from the chest up, looking down and to the left. The background is a blurred pinkish-purple.

SALLIT.

JE T'APPELLERAI  
à mon arrivée

A MON ARRIVEE.

**TAP**

**TAP**











JE NE T'AI JAMAIS  
PARLÉ DE MON COPAIN,  
PAS VRAI ?





TL VOIS, MON COPAIN...



*Desperate  
Housewife*



Scénario · Dessin  
**Yagwangtan**



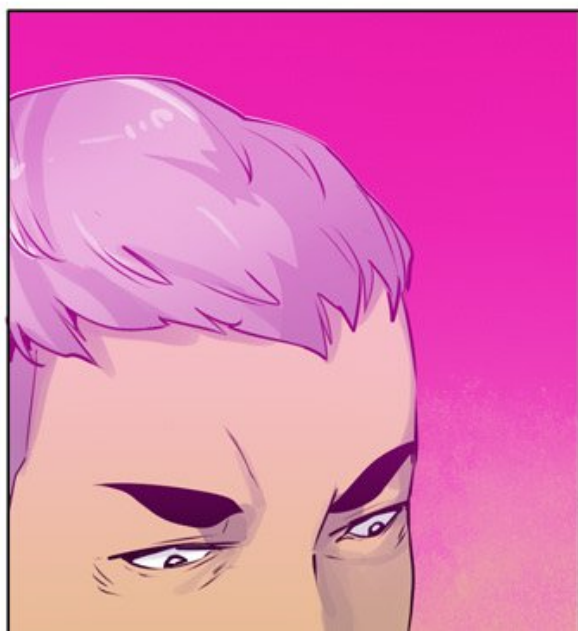
PROUVE-  
LE...

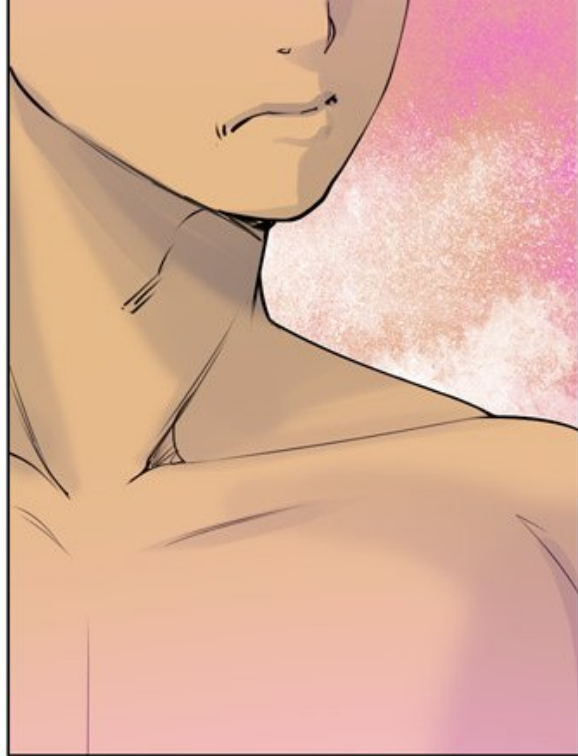




TU AVAIS  
ENVIE DE MOI.

JE SUIS  
D'ACCORD.







QUOI ? TU HÉSITES  
PARCE QU'IL Y A UNE FEMME  
DERRIÈRE LE MUR ?



OU  
C'EST MON AUDACE  
QUI TE BLOQUE ?



A small portion of a character's face is visible at the bottom center of the page, peeking over a horizontal line. The character has purple hair and wide, light-colored eyes.

VOYONS CE QUE  
JE PEUX FAIRE.



JE SUIS  
DOUÉE POUR  
LES PISES

LES PIPES.

HA...





JE TE LAISSERAI JOUIR  
DANS MA BOUCHE, C'EST CE  
QUE TOUS LES GARS  
VEULENT.



A close-up illustration of a woman's face, focusing on her eyes and forehead. She has light skin and dark, well-defined eyebrows. Her eyes are a striking blue-green color with a bright white highlight in each. The background is a solid, vibrant purple. A white speech bubble with a black outline is positioned in the upper left quadrant of the frame.

OU TU VEUX  
ME LA METTRE  
SANS CAPOTE ?



JE TE LAISSERAI  
FAIRE CE QUE TU VEUX.



**FWIP**



SAMSUNG



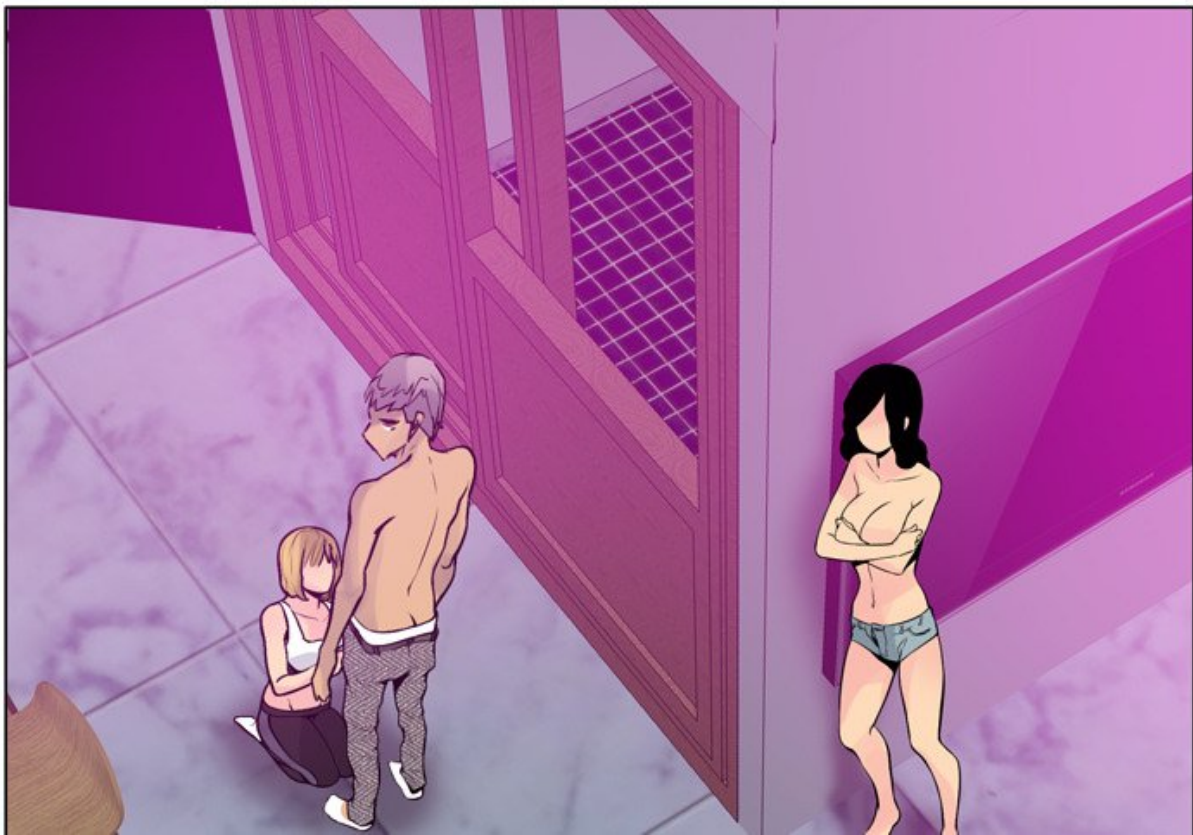
ARRÊTE...  
SOPHIE, ARRÊTE !



D'ACCORD !  
ELLE EST LÀ !

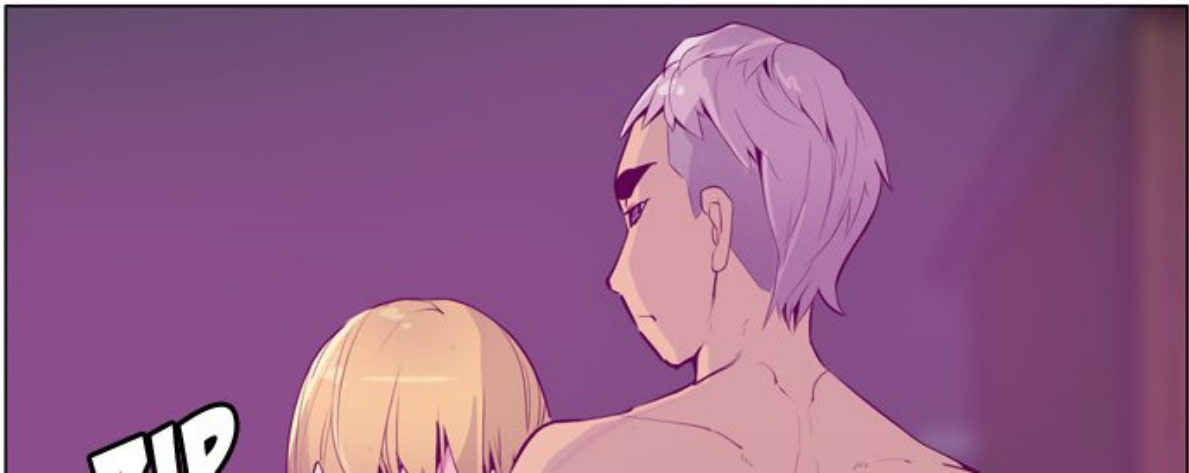


ALORS ON NE PEUT PAS  
FAIRE ÇA ICI...







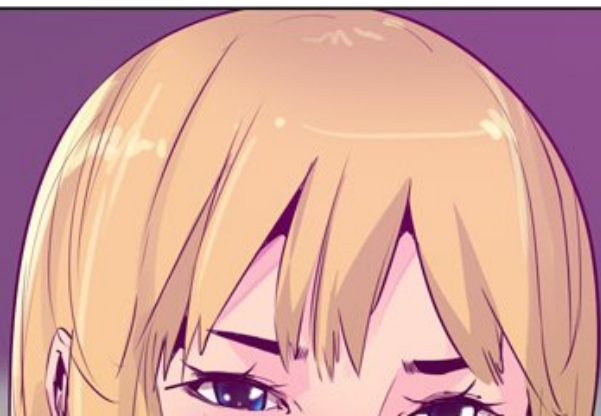


**ZIP**



ZIP







CONNARD.



**BAW**







**HF**



**PFF**



**PFF**



**PFF**







**SNIFF**



**SNIFF**

**SNIFF**



A character with short, spiky purple hair is shown from the chest up, looking downwards with a sad and apologetic expression. The background is a solid purple color.

DÉSOLÉ...





**TAP**



**TAP**



**BLAM**





THOMAS !





ÇA VA...?



A comic book panel featuring a man with short, spiky, light-colored hair, seen from the back. He is shirtless, and his muscular back and shoulders are clearly defined. He is looking towards the left side of the frame. In the foreground on the left, the back of a woman's head and shoulder is visible, rendered in dark purple and blue tones. A white speech bubble with a black outline is positioned above the man's head, containing the text "MME LEE...". The background is a soft, out-of-focus purple and blue gradient.

MME LEE...



TOUJ VA BIEN.





ELLE  
ÉTAIT TROP BIEN  
POUR MOI...



ET... MIEUX VAUT  
QU'ON SE SÉPARE.





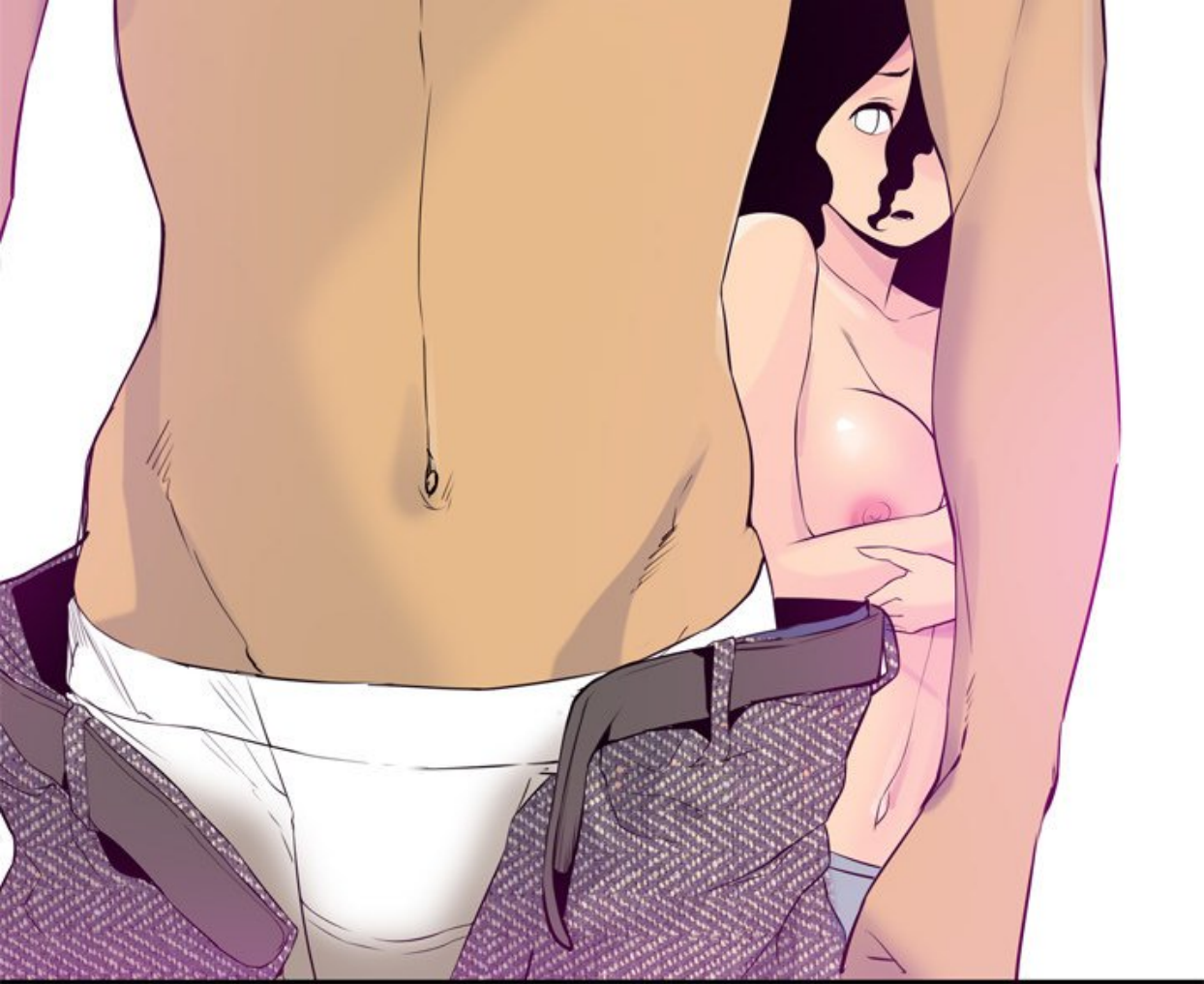
**VOUS ET SOPHIE,  
VOUS ÊTES DE LA  
MÊME FAMILLE.**



**ET LES FAMILLES  
NE DEVRAIENT PAS  
ÊTRE GÉRÉES**



LIKE SEPARATED.





THOMAS...

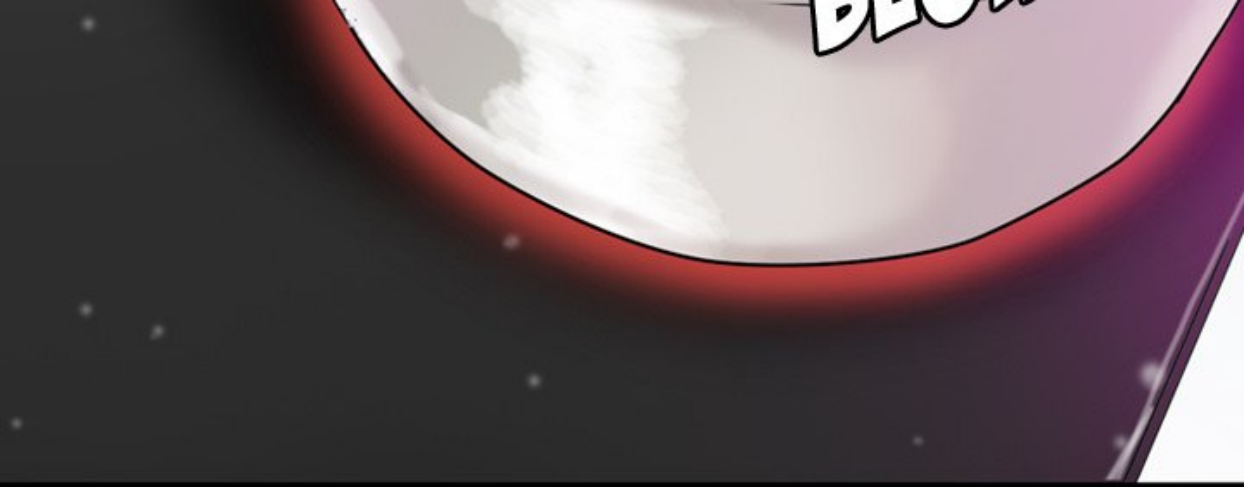






**BLOUP**

**BLOUP**



A purple fabric, possibly a piece of clothing, is shown from the waist down. A speech bubble is attached to the fabric on the right side. The background is white.

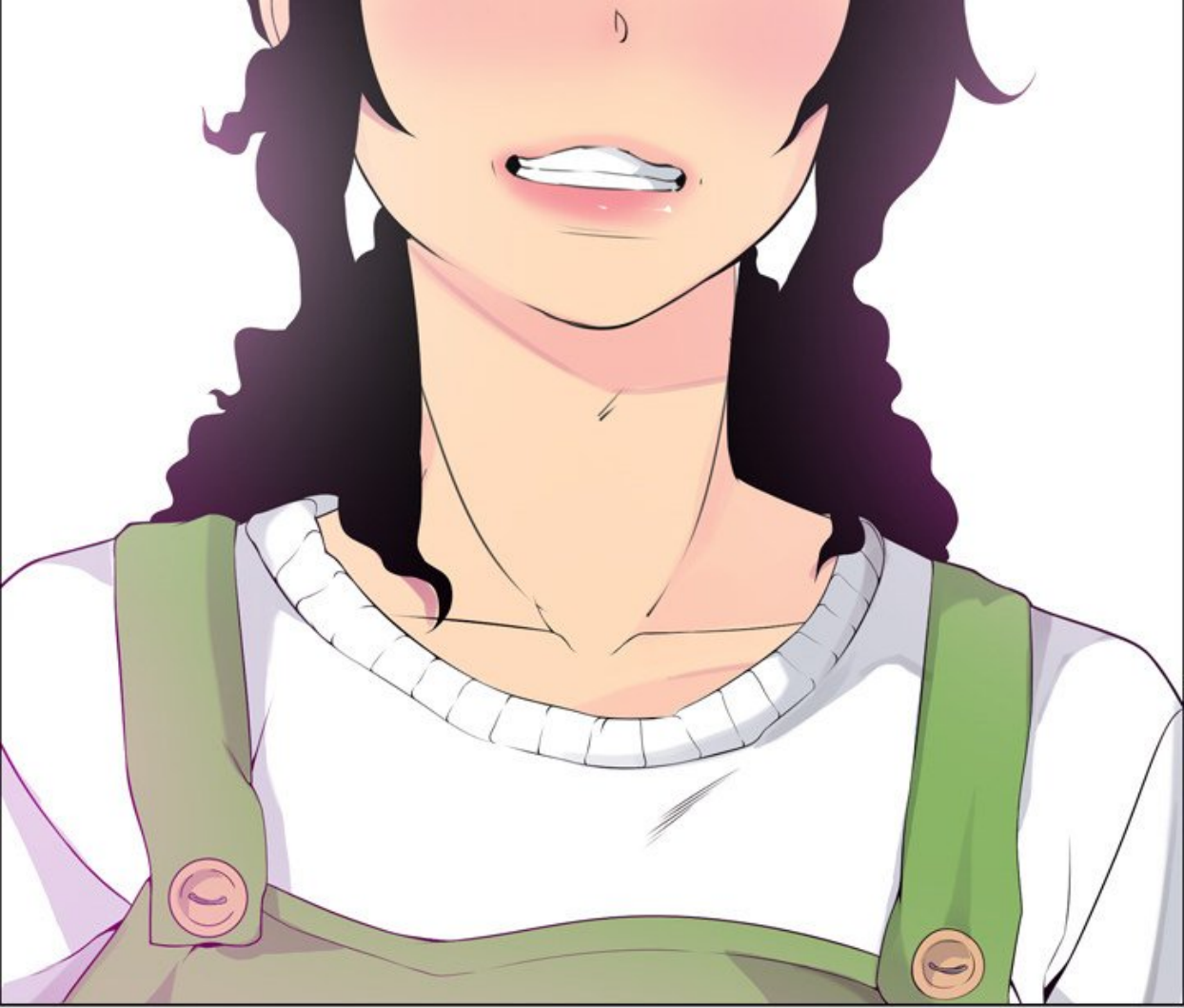
IL M'A  
TROMPÉE.



ALORS ON  
A ROMPLU...

AH...







A close-up illustration of two anime-style characters. The character on the left has short, layered pink hair and large, expressive blue eyes with a slight smile. The character on the right has straight, blonde hair and large, expressive blue eyes with a more serious expression. A speech bubble is positioned above the pink-haired character's head.

TU N'ES  
PAS SURPRISE ?





OU TU N'EN AS  
RIEN À FAIRE...



SALUT...

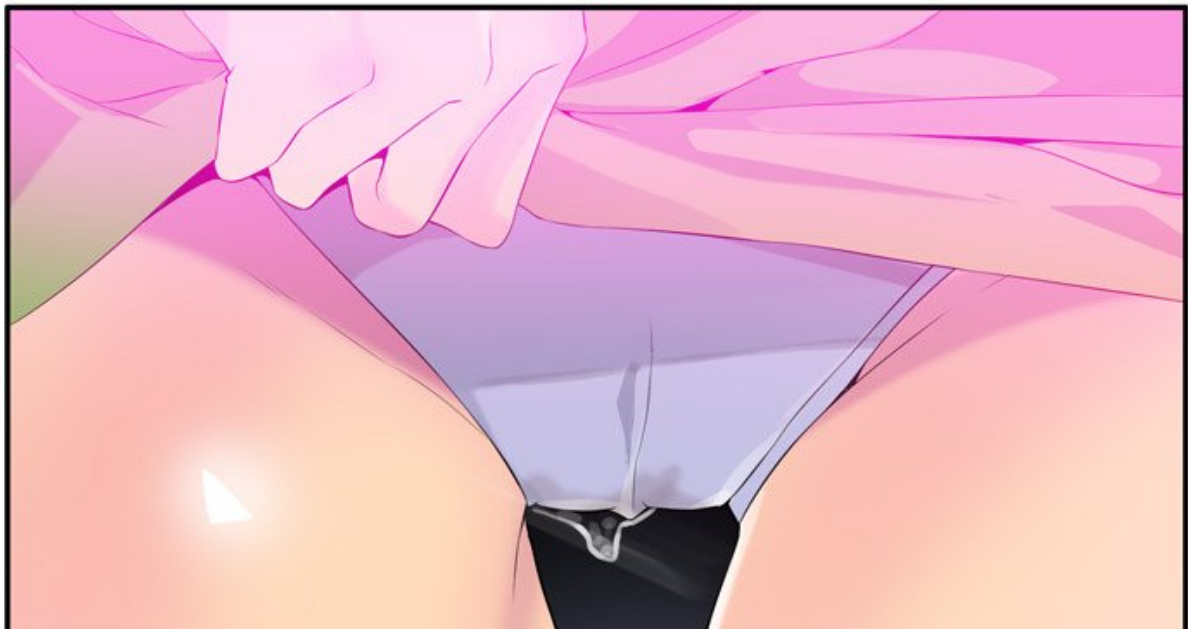
SOPHIE VA EN AMÉRIQUE...  
ELLE A DIT QU'ELLE VOULAIT  
UN NOUVEAU DÉPART.





J'AI L'IMPRESSION  
QU'ELLE PART À CAUSE  
DE MOI...

MAIS POURQUOI JE MOUILLE TELLEMENT ?





JE DOIS ÊTRE FOLLE...







CALME-TOI, LAURA.





**HA!**

**BAM**





FAIS-MOI JOUIR...  
ET JOUIS EN MOI,  
BÉBÉ !

HAA

HAA



JE VAIS JOUIR !  
LIMPH !

BAM

BAM



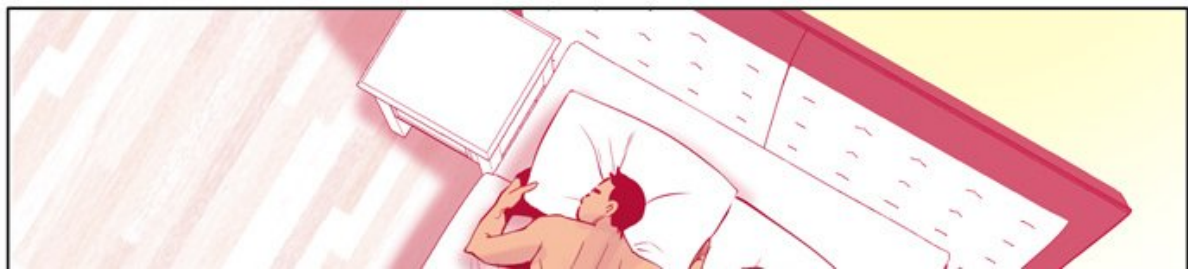
HA







**SPLASH**



**FLOP**

FIUU !  
JE SUIS VIDÉ.

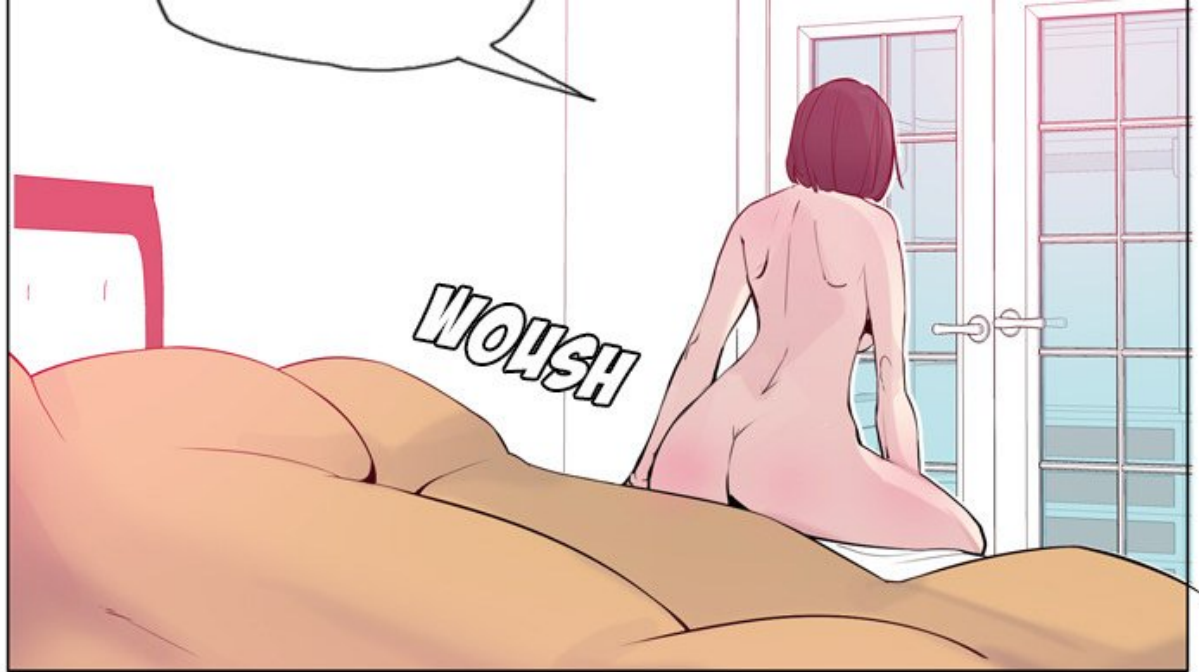


HAHA. JE NE PEUX PAS  
DÉPASSER LES TROIS FOIS  
PAR JOUR.

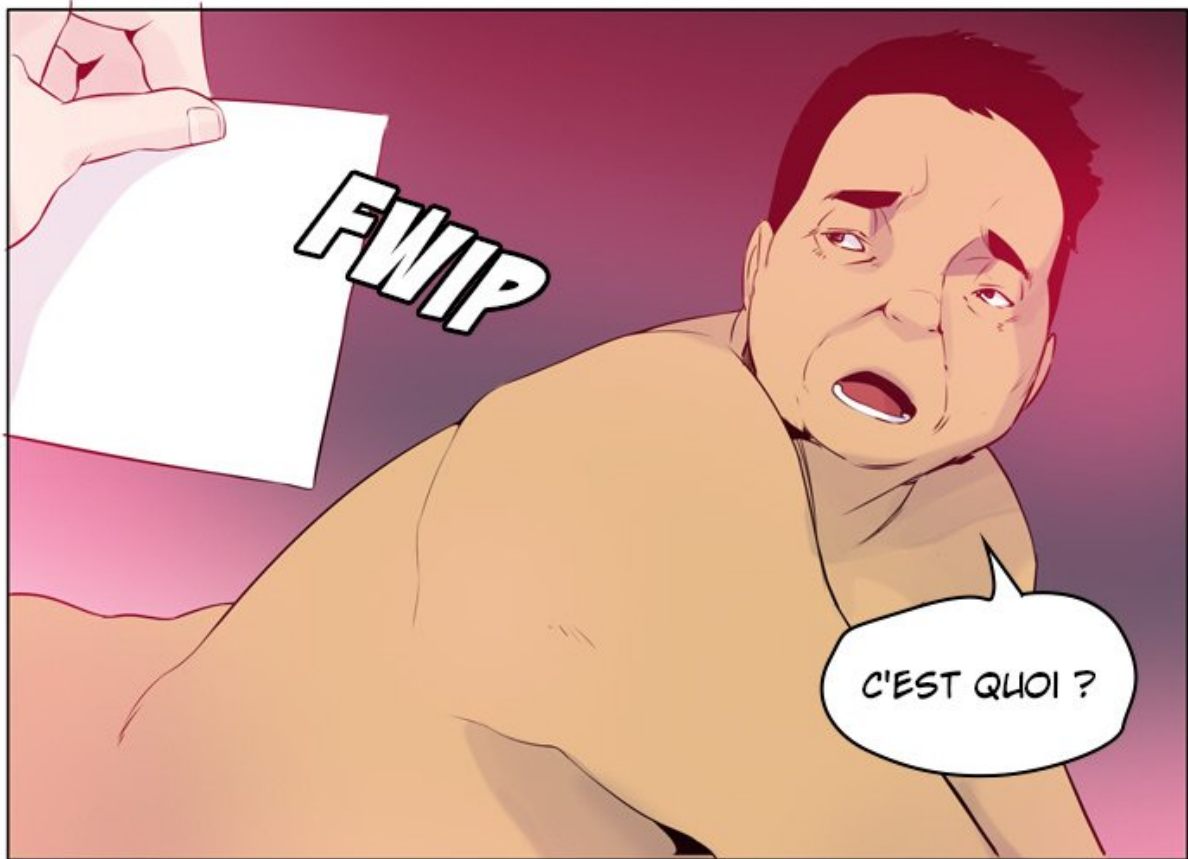


OH !  
J'AI UN TRUC  
POUR TOI.





WOWSH




**FWIP**

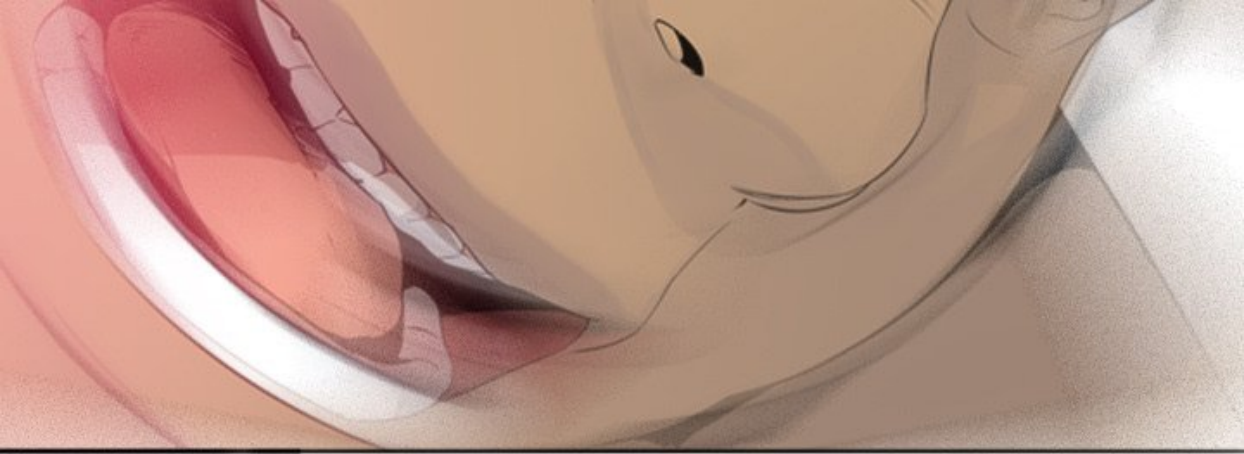
C'EST QUOI ?







C-C'EST  
QUOI, ÇA ?!



À SLIVRE

 TOOMICS.COM