



Desperato

Lauscomitia

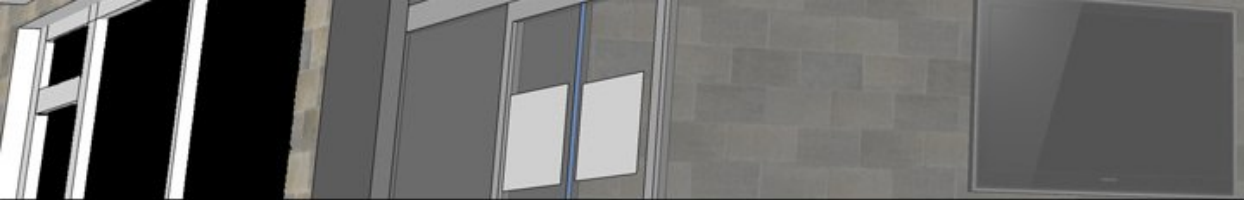
Flousewife

Scénario · Dessin
Yagwangtan






BRASSERIE

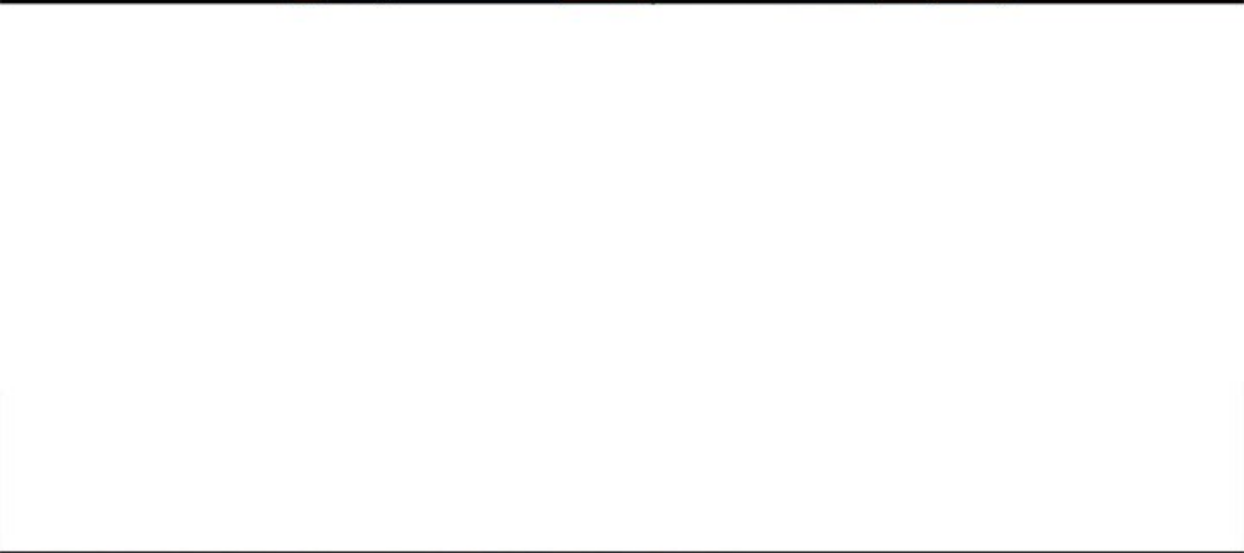






JE CROIS QUE JE SUIS
DÉJÀ SOÛLE.

JE DOIS RENTRER,
J'AI LA TÊTE
QUI TOURNE...





MA MAISON EST TROP LOIN...
HIC... D'ICI... TU PENSES QUE
J'ARRIVERAI À RENTRER ?

WOB

WOB



GURP





JE DOIS ALLER
AUX TOILETTES.

12000 ■ CHICKEN
13000 ■ BONELESS
15000 ■ CHICKEN & RICE
15000 ■ THAI
15000 ■ THAI
15000 ■ THAI
15000 ■ THAI
15000 ■ THAI

5000
2000
5000



HEIN ?
AUX TOI...

WOUSH

A woman with short blonde hair, wearing a white tank top and light blue shorts, is sitting at a bar. She has a surprised expression on her face, with wide eyes and an open mouth. Her right hand is raised near her face. On the bar in front of her are two green bottles with white labels and a small glass. The background is a grey wall.



J'AI DIT QUE JE NE POUVAIS
PAS RENTRER CHEZ MOI CE SOIR
ET IL VA AUX TOILETTES ?

GRR

GLOUP

C'EST PAS UN HOMME
OU QUOI ?

ENFIN, UNE FILLE
SI JOLIE ET QUI PORTE
UNE TENUE SUPER SEXY

LUI DIT QU'ELLE
NE PEUT PAS
RENTRE...



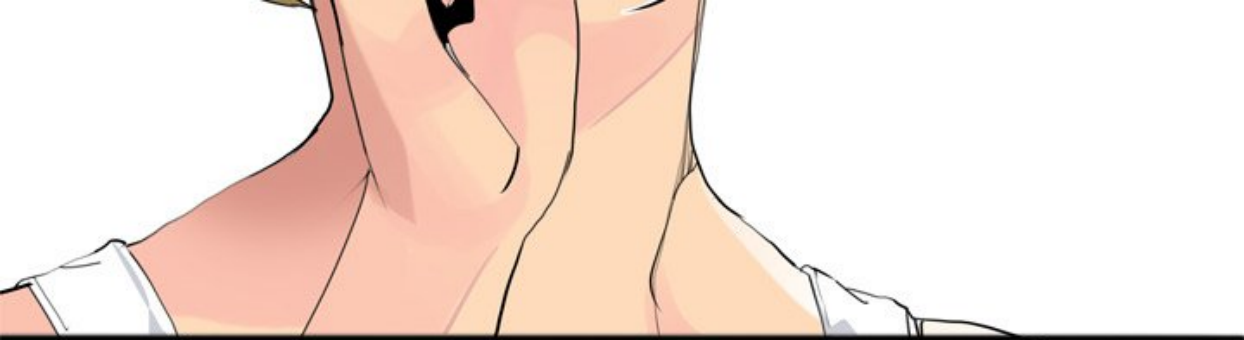
A hand in a white sleeve points towards a white surface. A speech bubble is positioned near the hand. The background is a gradient of orange and red.

ET IL SE CONTENTE
DE DIRE...

QU'IL DOIT ALLER
AUX TOILETTES ?

NEW FRIENDS!





JE N'AVAIS PAS L'AIR
ASSEZ SOÛLE ? J'AURAI DÛ
BOIRE DAVANTAGE.







QUOI ?
IL N'Y EN A PLUS ?

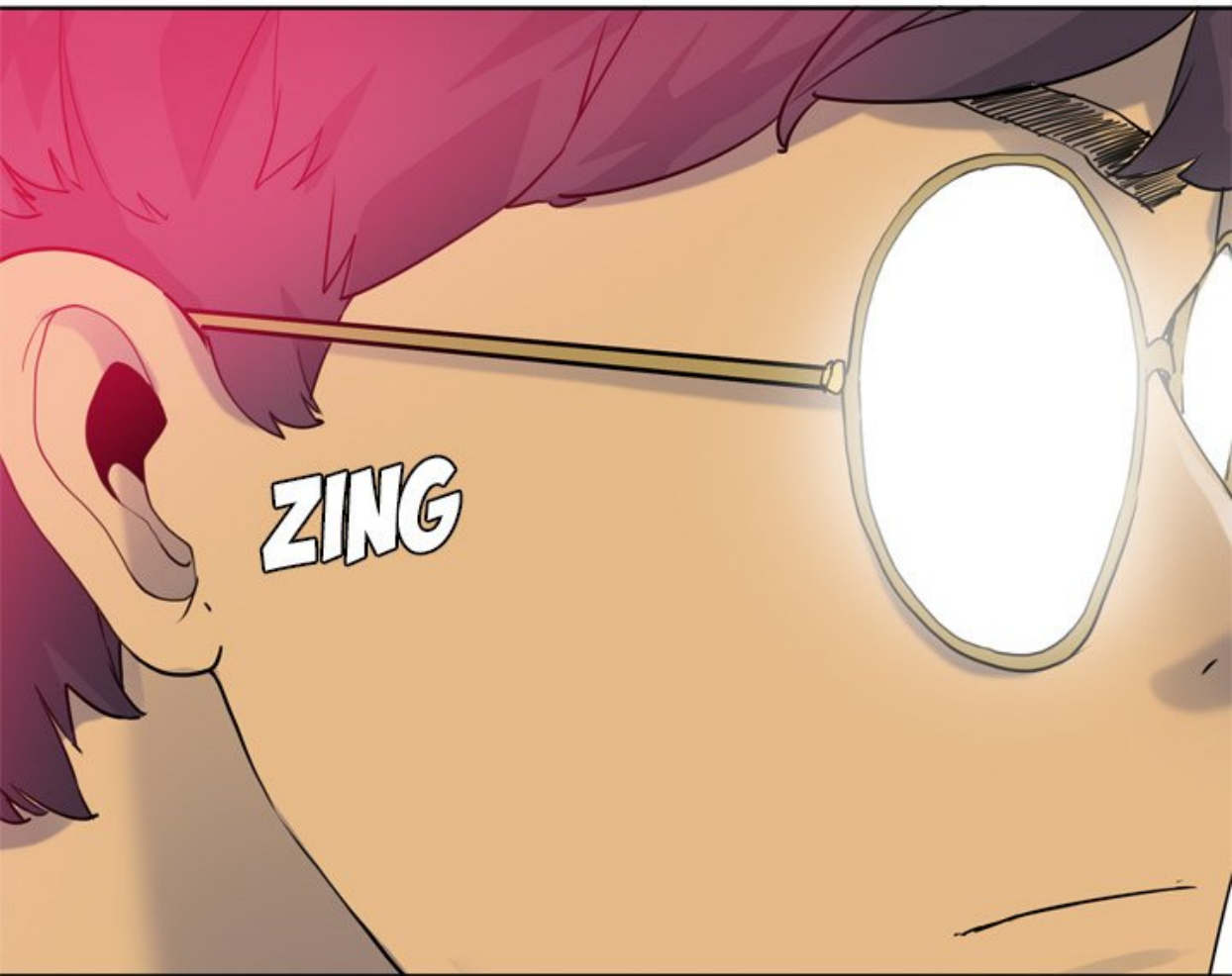
EXCUSEZ-MOI !
PLUS DE SOJU,
S'IL VOUS PLAÎT !
LE PLUS FORT !



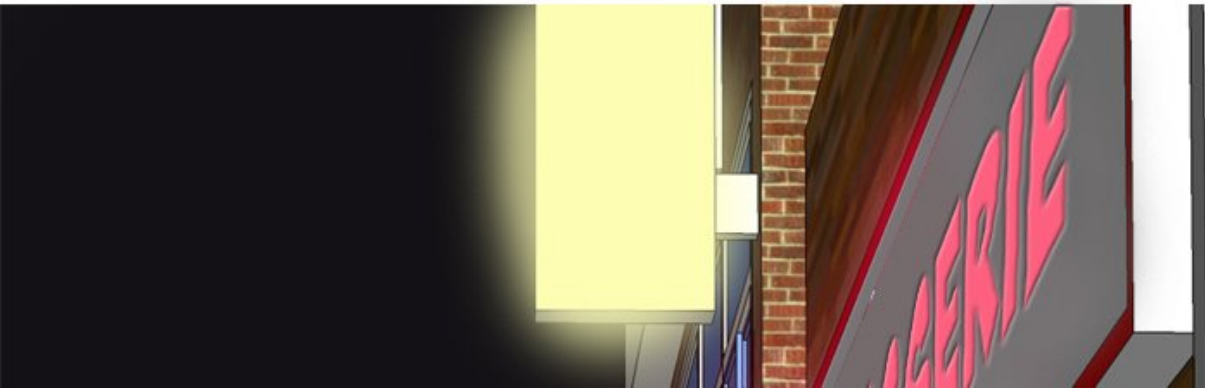


JE VAIS DÉFINITIVEMENT
COUCHER AVEC LUI CE SOIR !





ZING







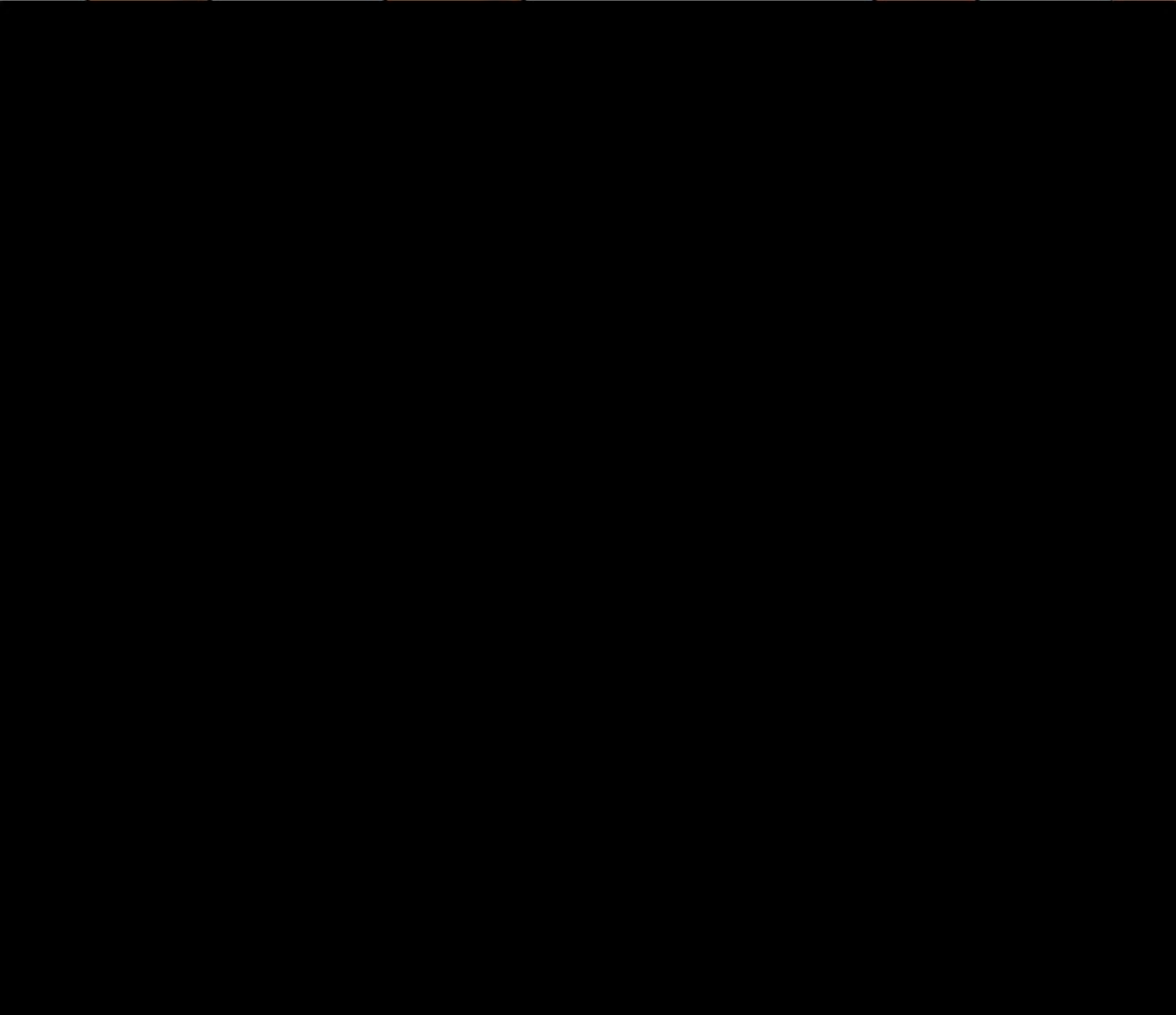
A close-up, profile view of a young man's face. He has light brown skin and dark hair. His eyes are looking down and to the left, with a single tear visible on his cheek. The lighting is soft, highlighting the contours of his face. The background is a dark, solid color.

PFF

VOUS...
VOUS ÊTES JOLIE AUJOURD'HHI...
SI VOUS ME LE PERMETTEZ...



JE VOIS...





JE VAIS
TE LAISSER FAIRE.



BOUM

BOUM

BOUM

BOUM

BOUM





BOUM

BOUM



BOUM

BOUM

THOMAS,
JE VAIS TE LE
PERMETTRE !

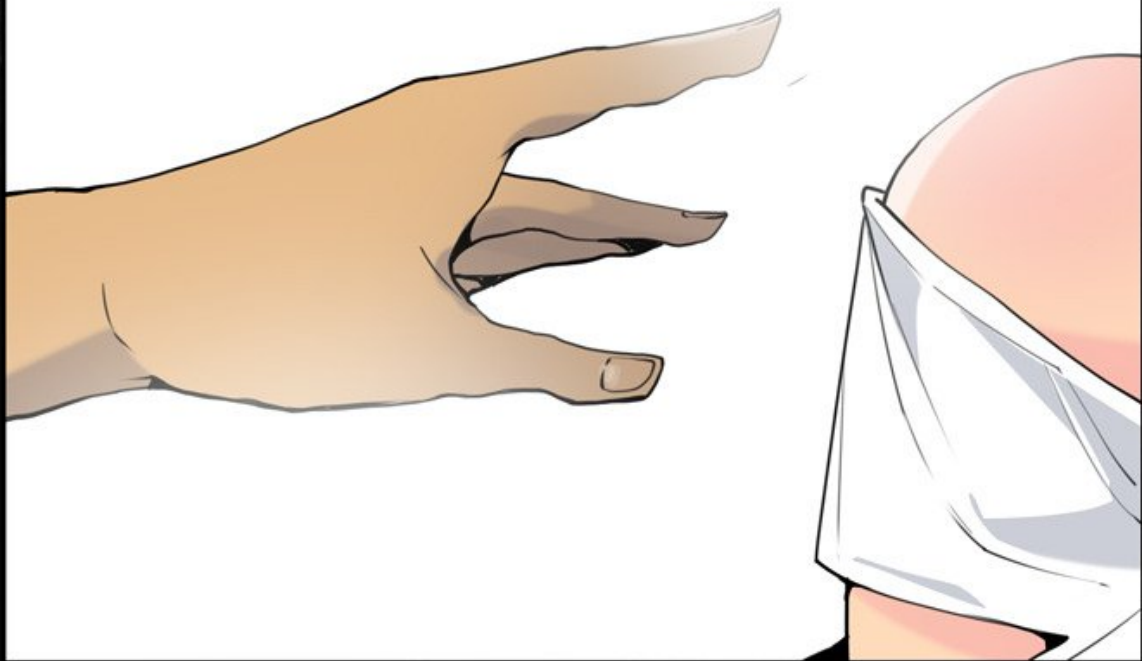
BOUM

BOUM



BOUM

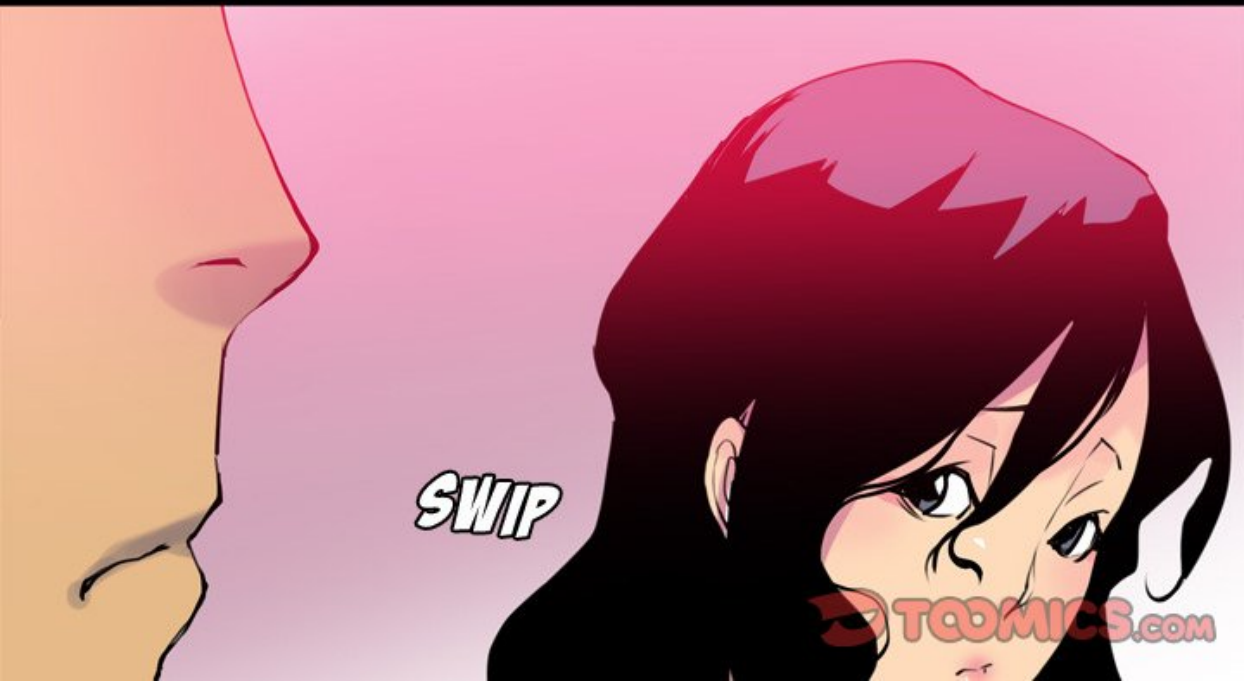






LAURA...





SWIP

TOOMICS.COM

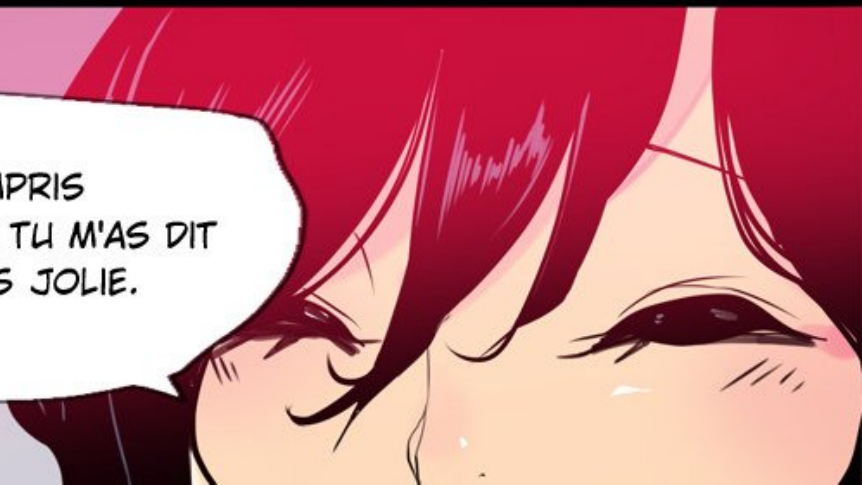


TU VEUX SAVOIR
SI TU PEUX ALLER VOIR
TA COPINE, C'EST ÇA ?





J'AI COMPRIS
AU MOMENT OÙ TU M'AS DIT
QUE J'ÉTAIS JOLIE.





JE VOULAIS FINIR
VITE AUJOURD'HUI, ALORS
C'EST BON.





ARRÊTONS POUR
AUJOURD'HUI, ON
RATRAPERA
DEMAIN.





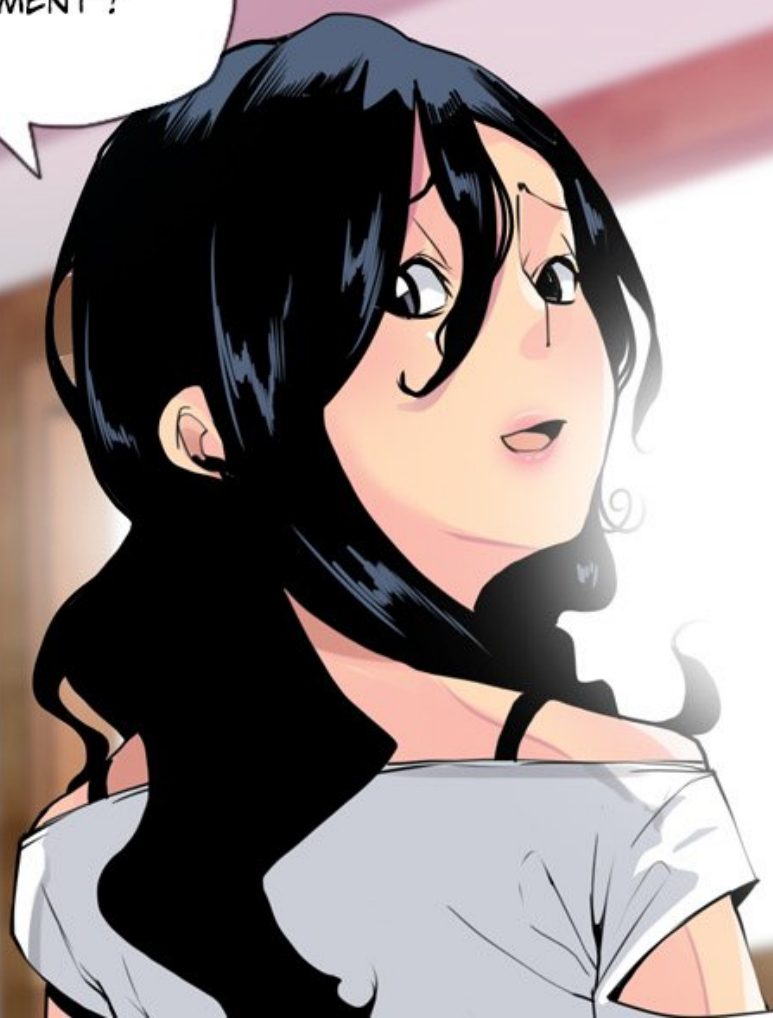
OH, AU FAIT...





TU VOULAIS
SANS DOUTE JUSTE
ME FLATTER MAIS...

MERCI POUR
LE COMPLIMENT !



A comic book panel showing a person's torso and hands. The person is wearing a grey long-sleeved shirt and dark blue pants. Their hands are visible, holding a small object. The background is a simple gradient of colors.

ON NE M'A PAS APPELÉE
JOLIE DEPUIS 20 ANS !

MERCI.

A pink, fluffy character is shown from the chest up, facing right. A large white speech bubble with a black outline is positioned above its head, containing the text. The character is set against a background of a red brick wall. To the left, a red door is partially open, revealing a yellow light source.

AMUSE-TOI BIEN,
À LA PROCHAINE !

CLIC

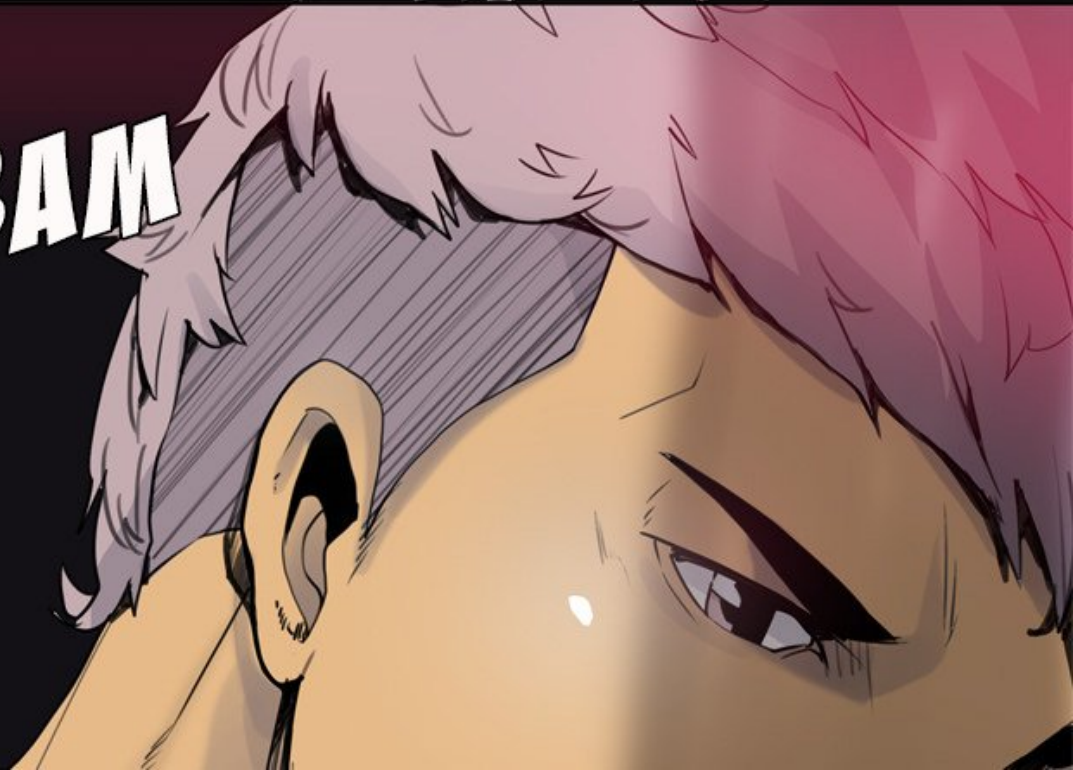
CLIC



T

T

BAM





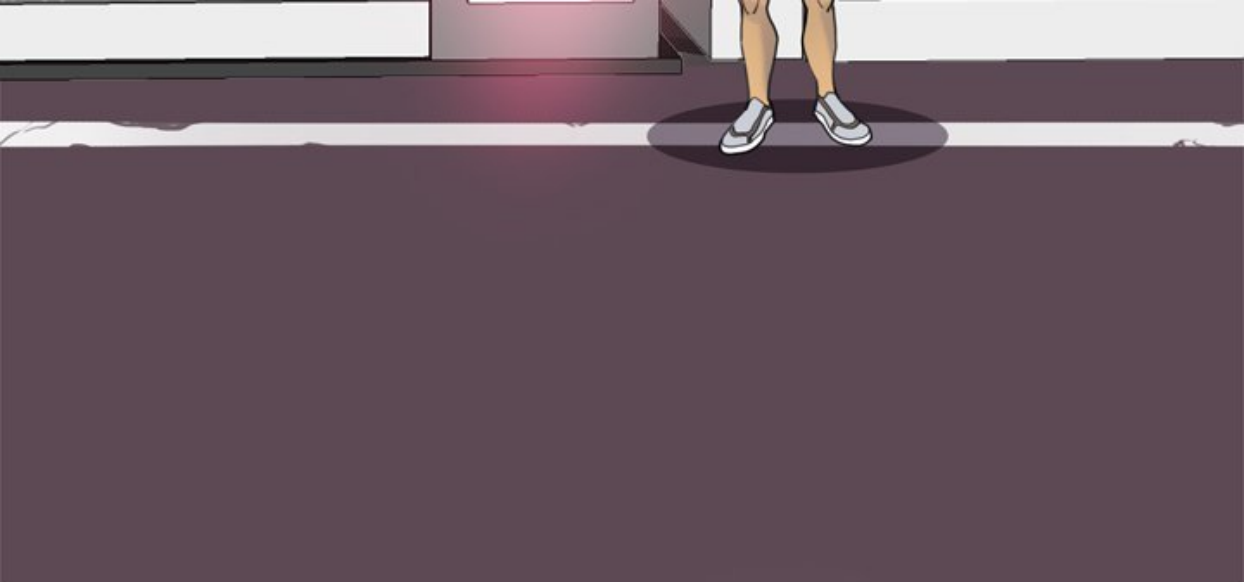
BRASSERIE



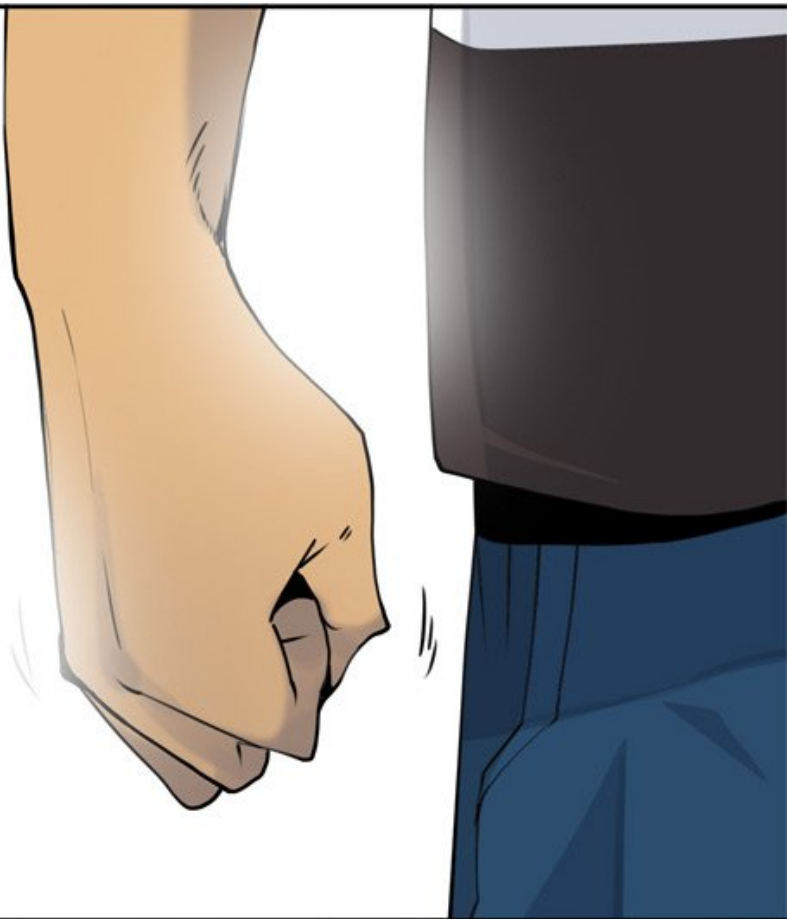
ASSERIE

**B
R
A
S
S
E
R
I
E**





GRR





BAM

IMBÉCILE !

BAM

COMMENT AS-TU
PU PENSER UNE TELLE
CHOSE MÊME EN
ÉTANT DÉBILE ?

BAM

BAM



IDIOT !

BAM

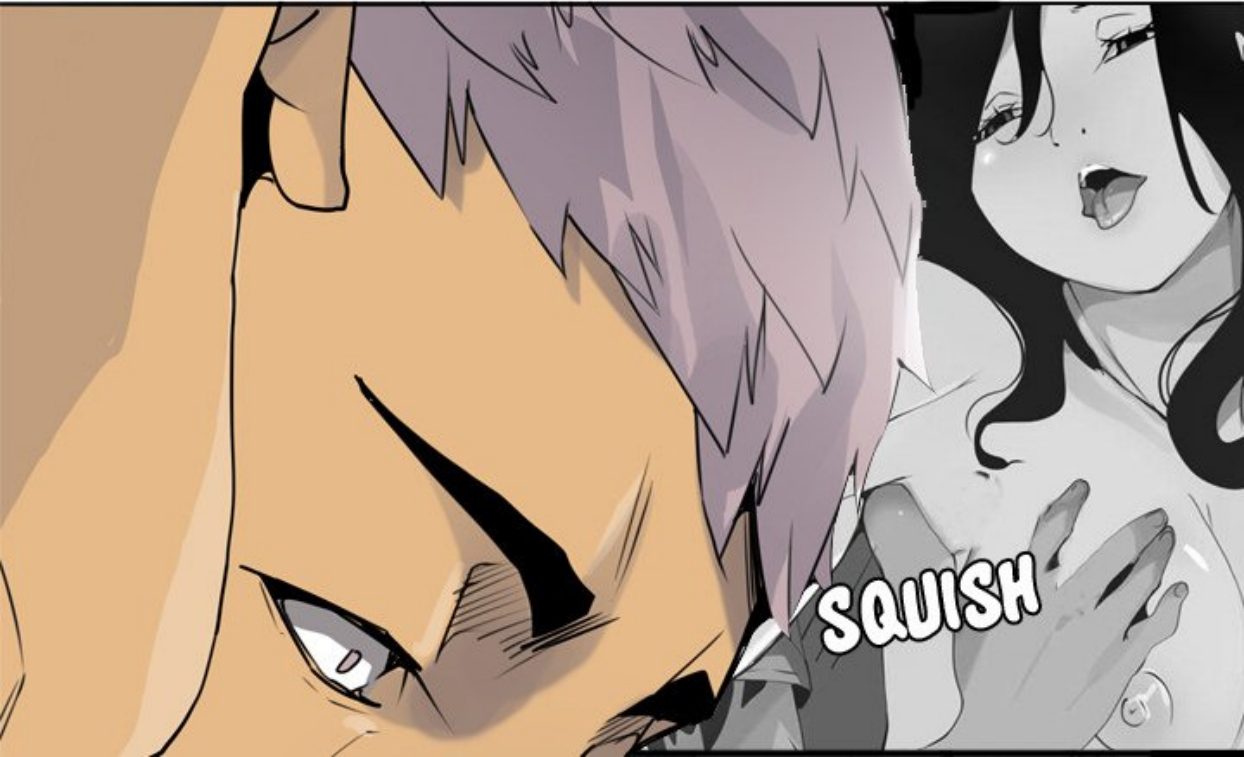
**B
R
A
S
S
E
R
I**

BAM



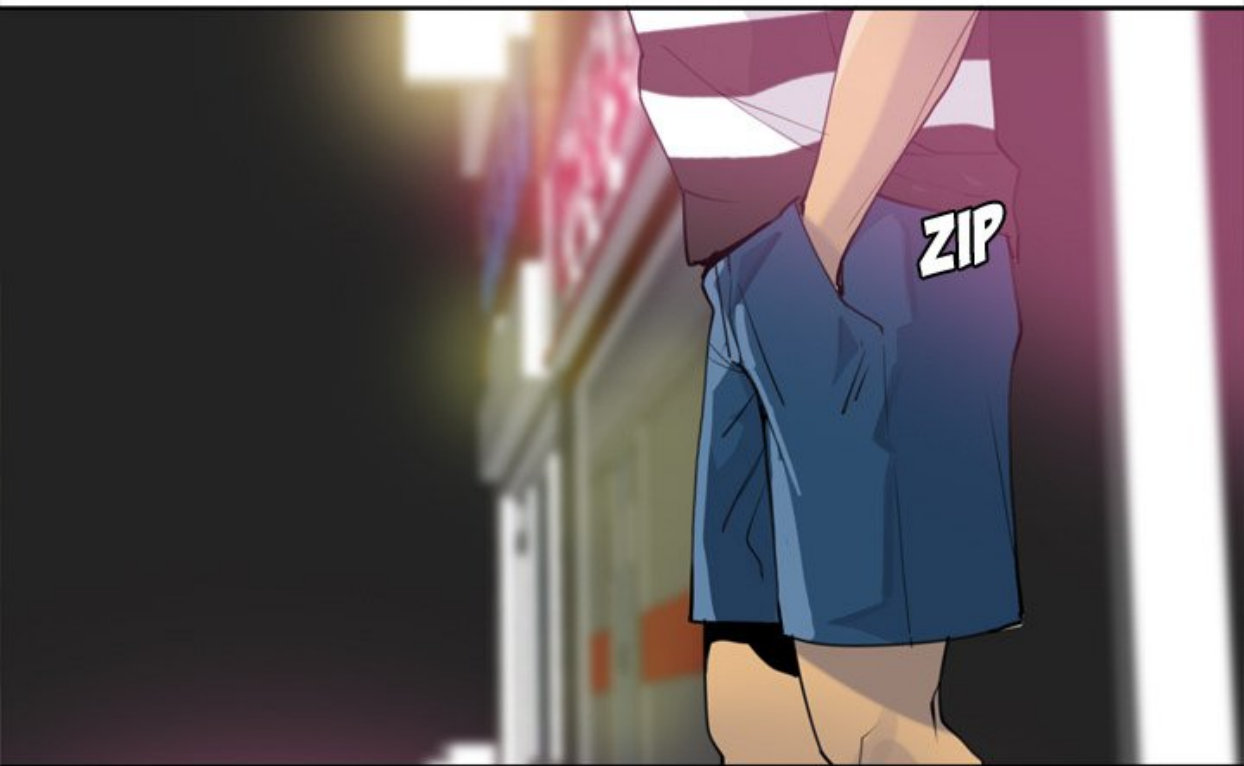


ORDURE !



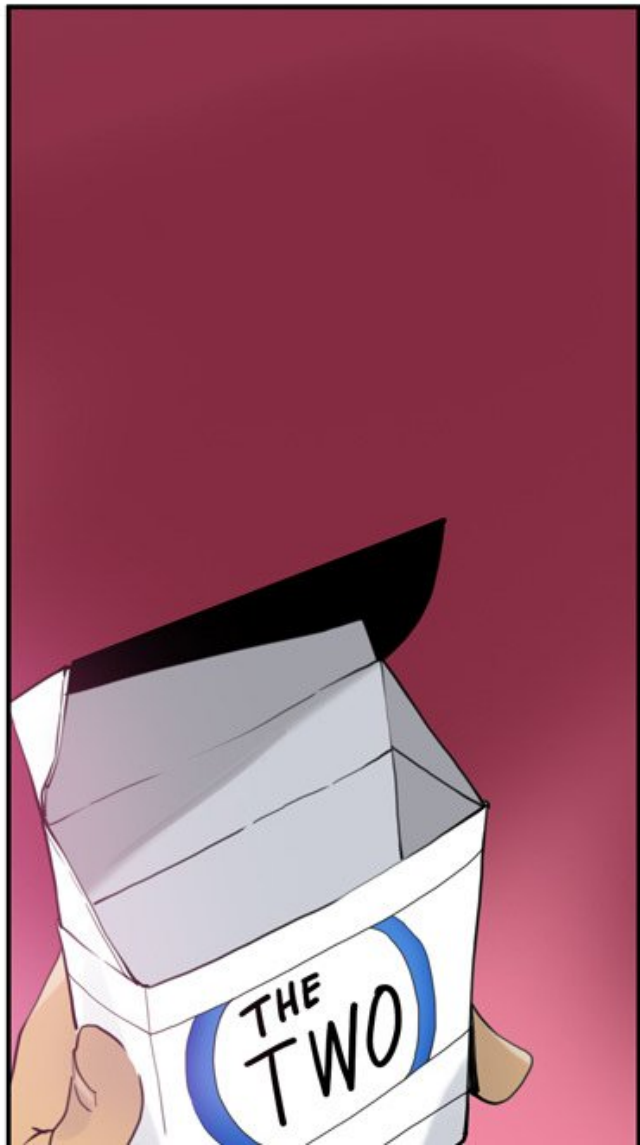
SQUISH













QUAND EST-CE
QUE J'AI TOUT FUMÉ ?

JE VAIS
EN FUMER UNE
ET REVENIR.

BRASSERIE

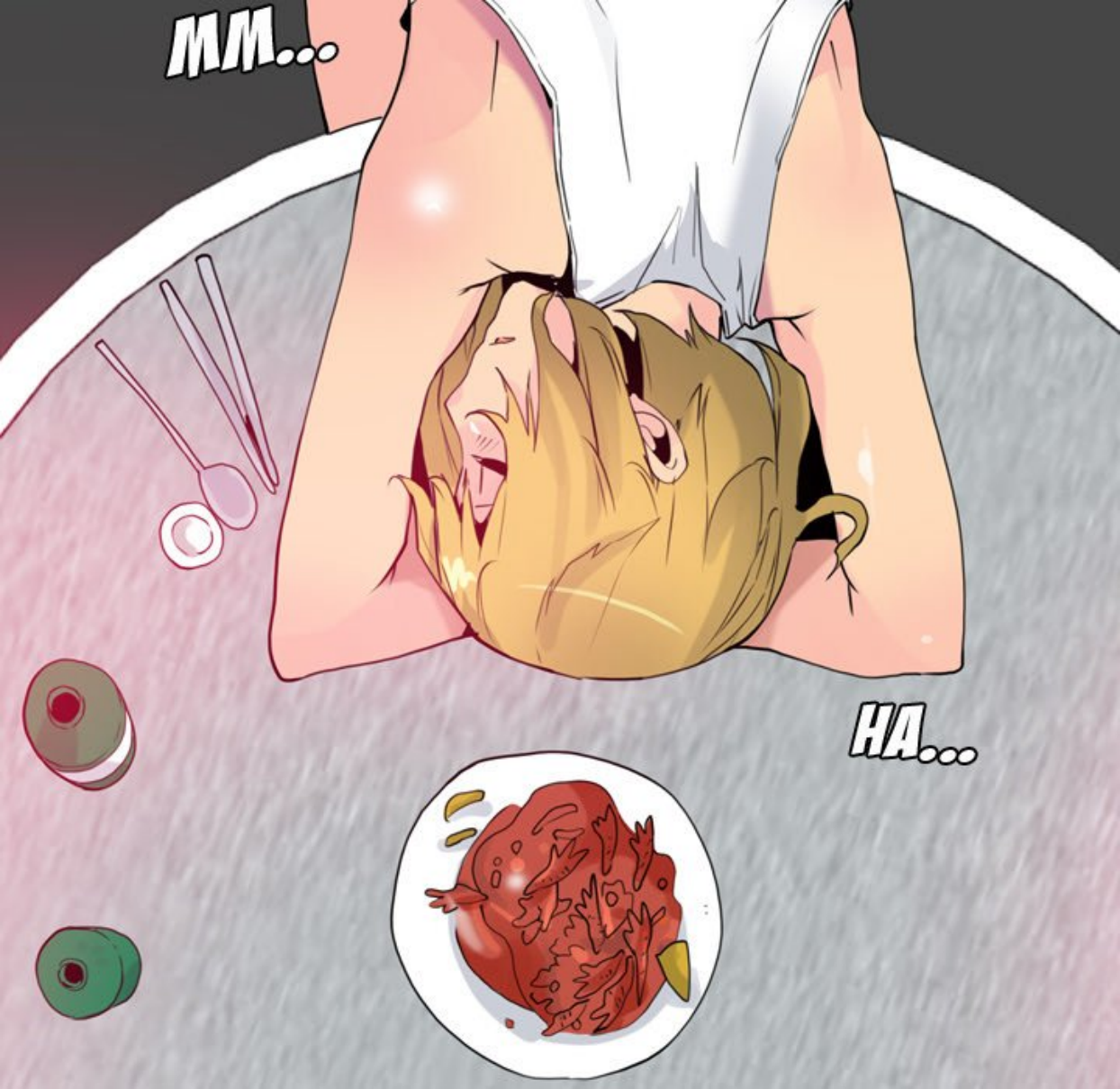




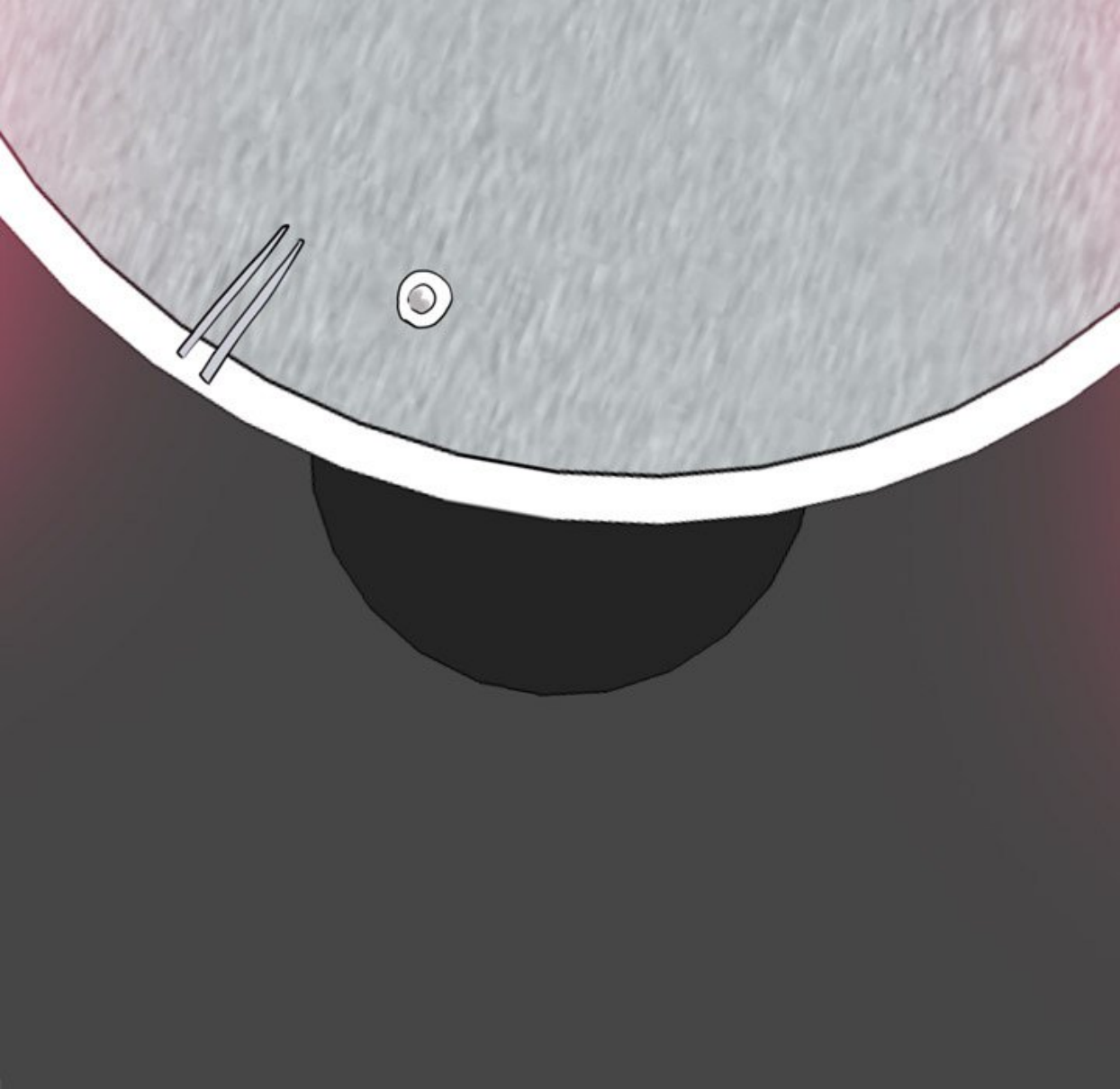




MM...



HA...



ZZZZ



ZZ



SOPHIE.


TAP



TU NE
RENTRES PAS ?







QUOI ?
TU VEUX QUE JE RENTRE ?

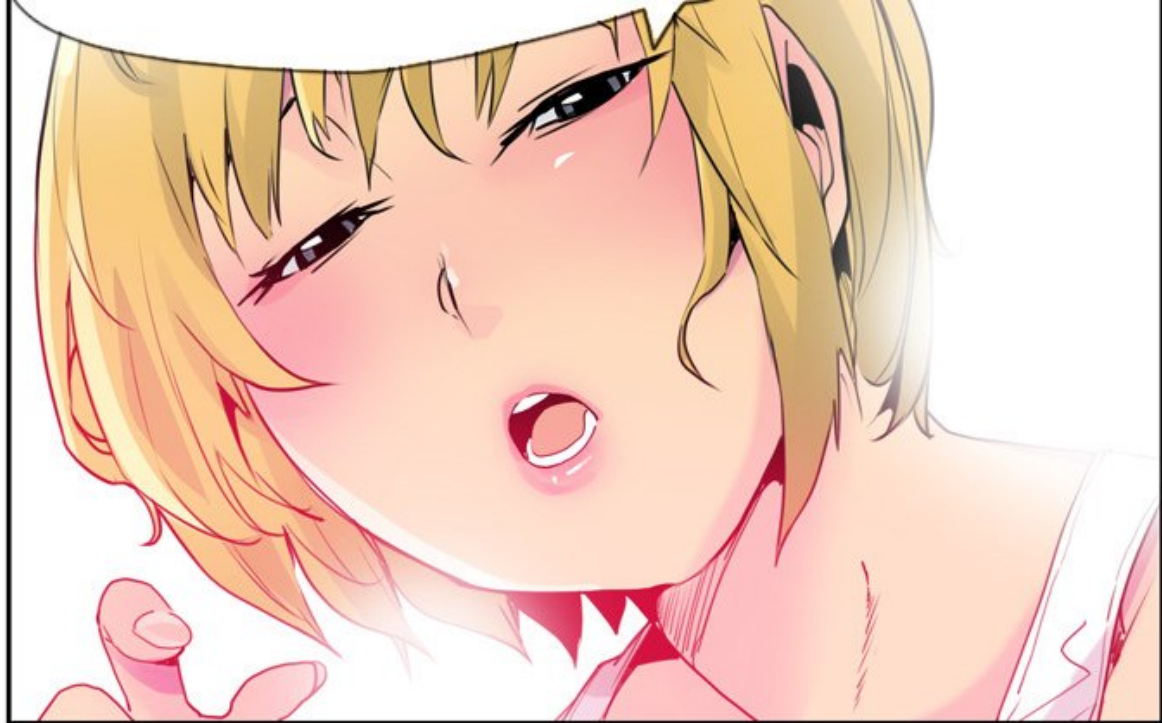
WOUP



T'ES PAS UN MEC ?
CAR SI T'EN ÉTAIS UN...



TU ME FERAI FORCÉMENT
DES TRUCS APRÈS TOUT CE QUE
J'AI ESSAYÉ !





JE NE RENTRERAI PAS
CE SOIR... JE NE PEUX PAS !

JE VEUX VRAIMENT...





SOPHIE VA COUCHER AVEC TOI !



HIC





D'ACCORD.



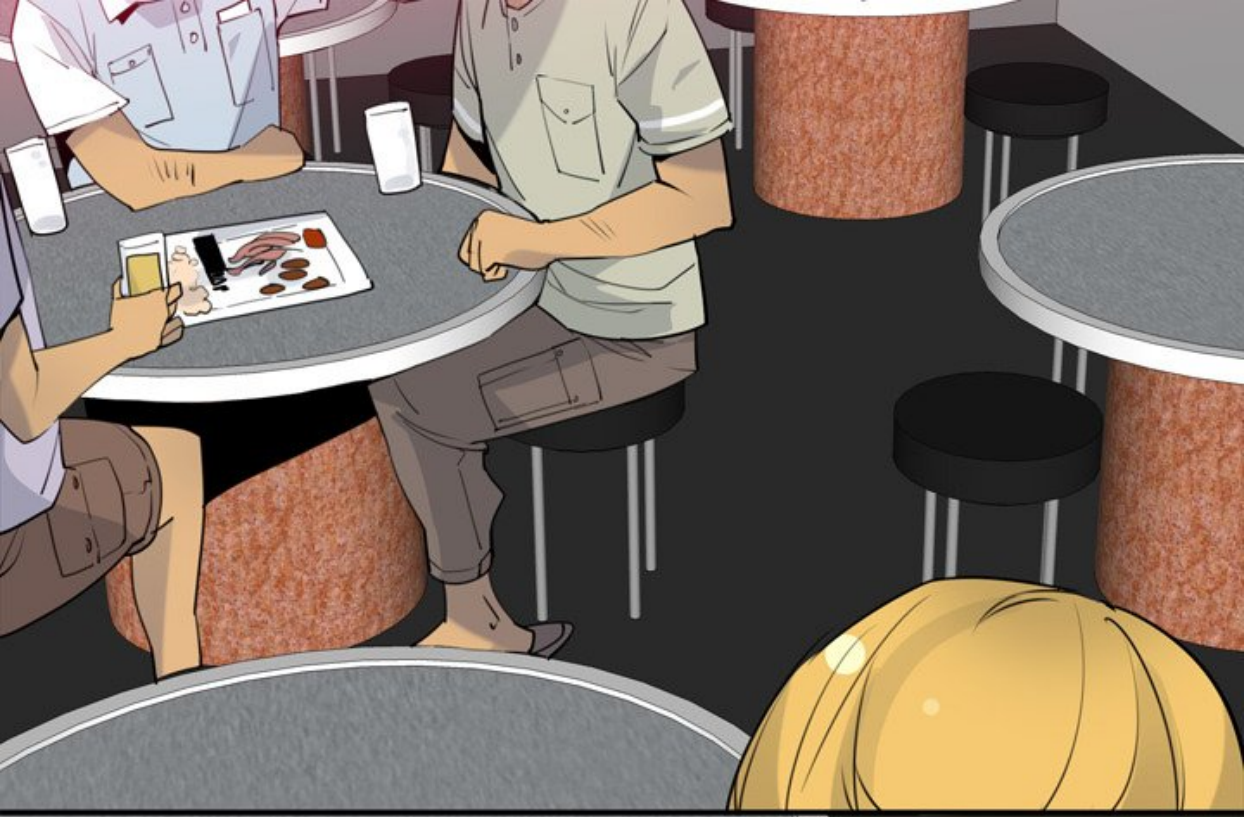


WOB

WOB

ALLONS-Y.







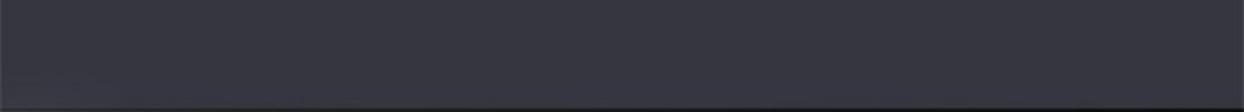
BRASSERIE

The image shows a stylized, low-angle view of a building's upper portion. At the top, the word "BRASSERIE" is written in large, bold, red, sans-serif capital letters, slanted slightly to the right. Below the text is a thick red horizontal band. Underneath this band is a grey horizontal section. On the left side of this grey section, there is a window with a white frame and two white rectangular panes. To the right of the window, there is a dark grey rectangular shape, possibly a doorway or another window. The overall style is graphic and minimalist, with flat colors and sharp lines.

An illustration showing two feet from a top-down perspective, wearing light grey sneakers with brown accents and laces. The feet are positioned on a dark surface. The background is a gradient of purple and pink. The word 'TAP' is written in white, bold, italicized letters below each foot.

TAP

TAP





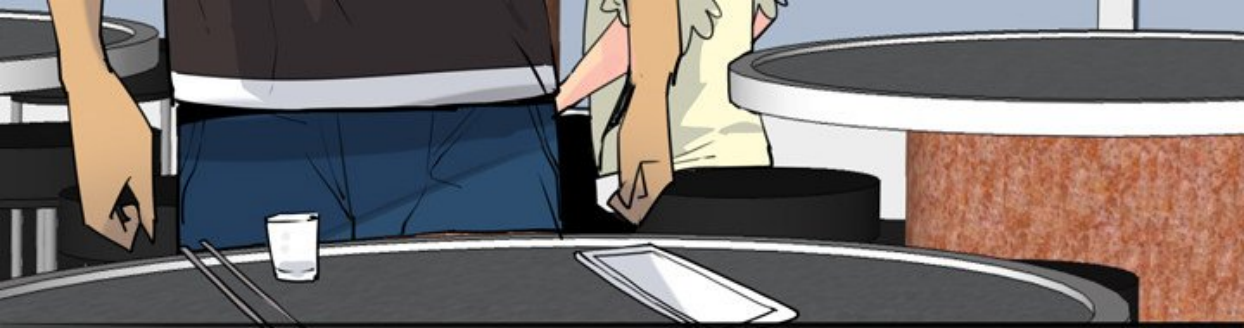






A man with short, light-colored hair and a serious expression stands in the foreground. He is wearing a black and white horizontally striped t-shirt. Behind him, a woman with long dark hair is seen from the back, wearing a light-colored top. The background consists of a light blue wall with horizontal lines and a white door frame on the right. A white speech bubble is positioned above the man's head, containing the text 'OÙ EST-ELLE PASSÉE ?'.

OÙ EST-ELLE
PASSÉE ?

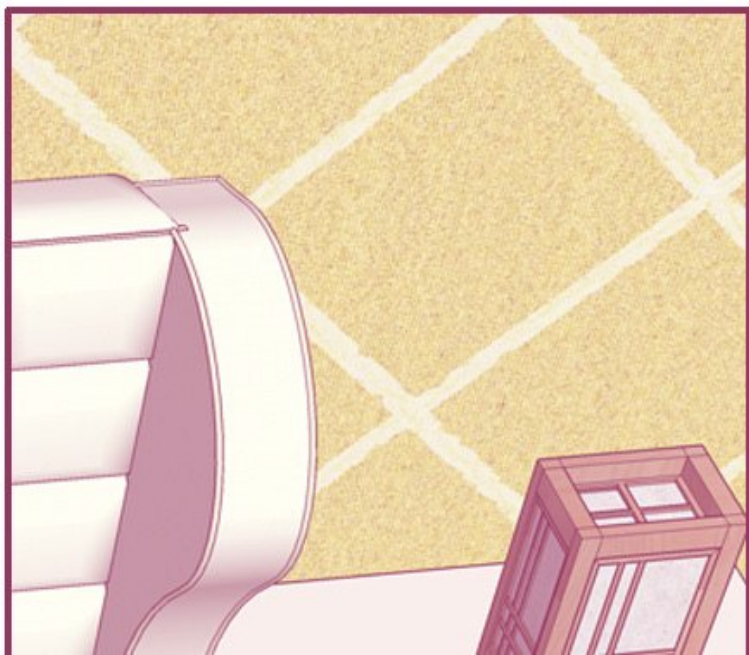


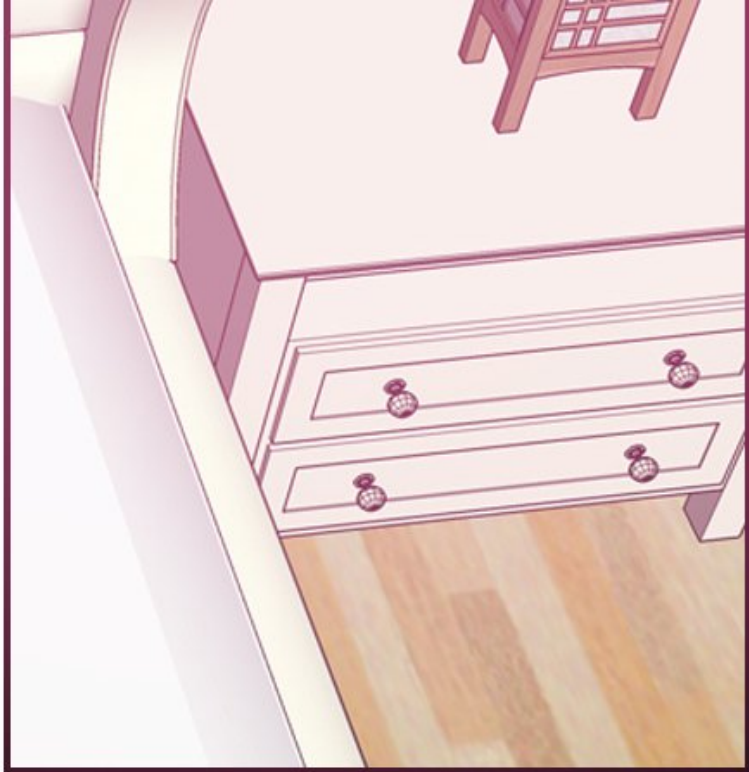
SON TÉLÉPHONE
EST LÀ. ELLE N'EST
PAS RENTRÉE.













MM...
JE NE ME SENS PAS
SUPER BIEN...







SOPHIE, JE NE SAVAIS PAS
QUE TU ÉTAIS AUSSI FACILE.

HÉHÉ



TU AVAIS L'AIR

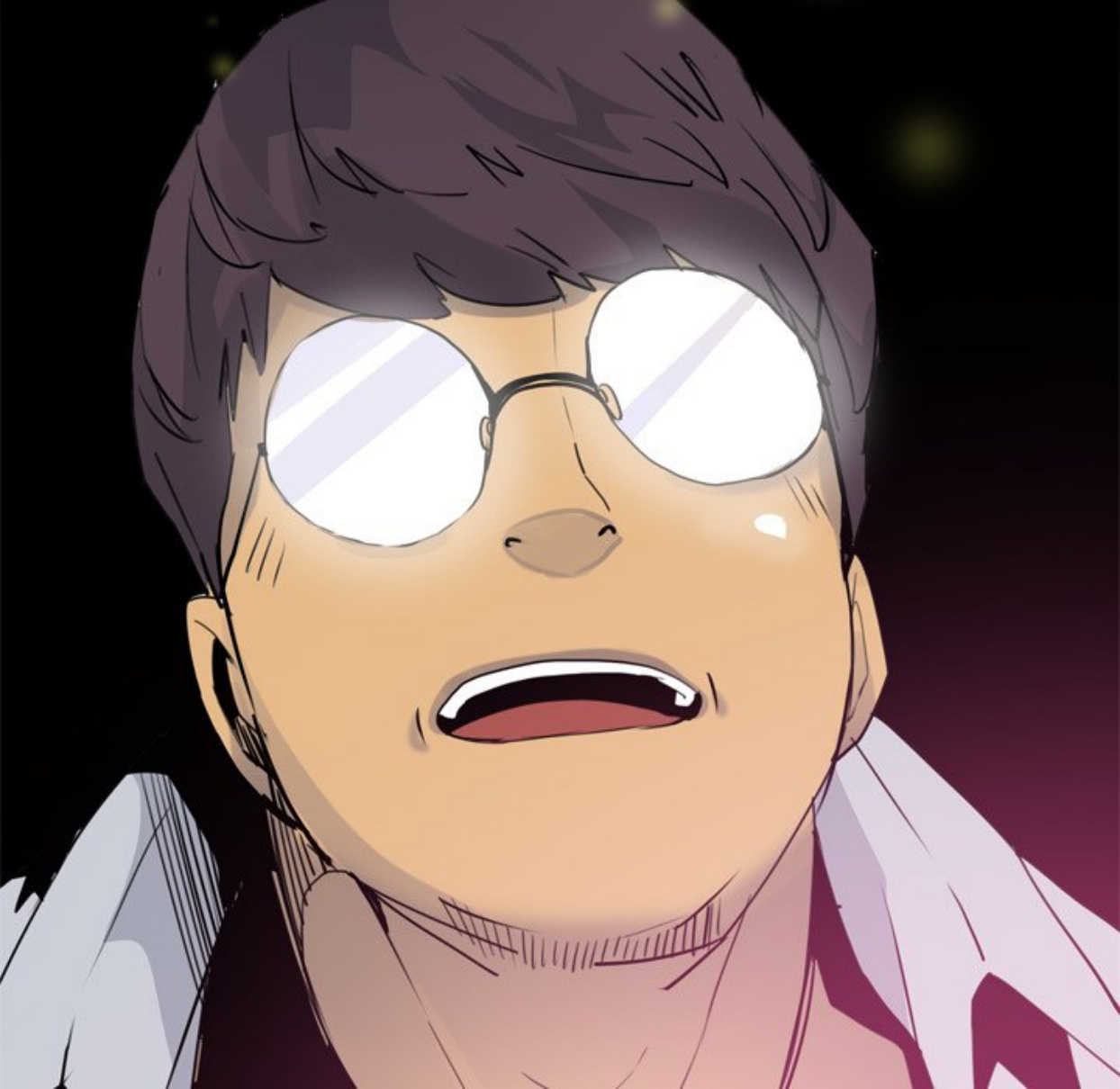
UN PEU DE LA MÊME


INNOCENTE A L'ECOLE...

MAIS C'ÉTAIT UN MENSONGE !

HÉHÉ

HÉHÉ





CE N'EST PAS HONORABLE DE VOIR
UNE CAMARADE DE CLASSE ET DE REFUSER
SES AVANCES.

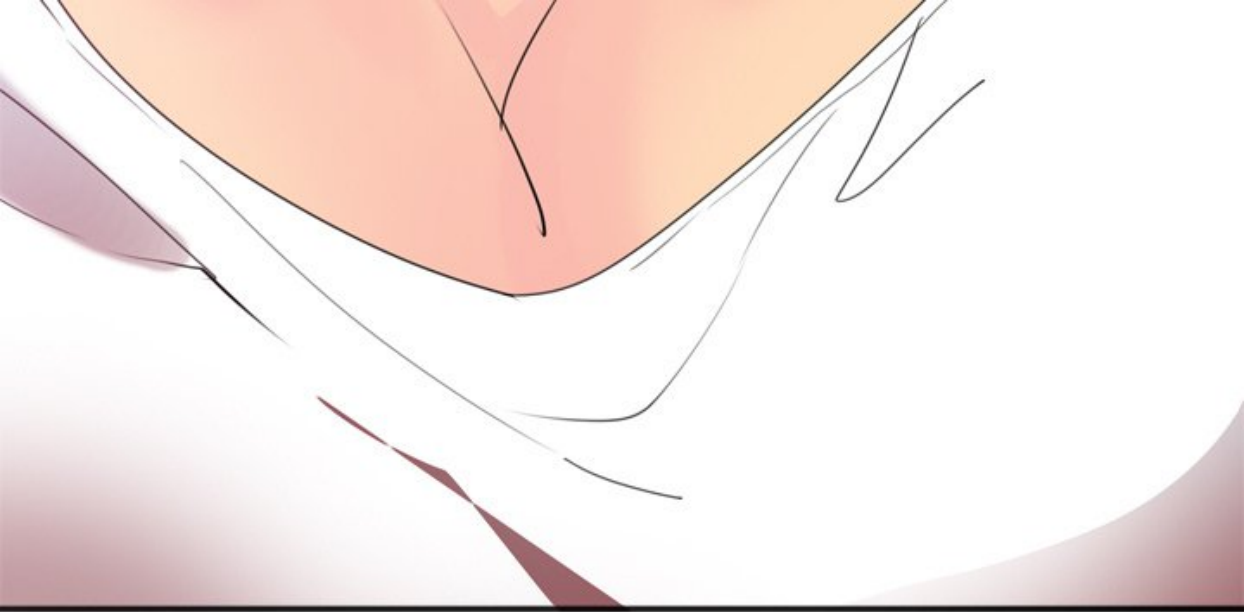




HAA



HAA



À SLIVRE